



# CEFAGE

centro de estudos e formação avançada em gestão e economia

## SUMMARY OF SCIENTIFIC RESEARCH

# 2014



UNIVERSIDADE  
DE ÉVORA



**SUMMARY OF SCIENTIFIC RESEARCH  
2014**

---

***Editor***

M. Aurora M. Galego

***Technical Support and Graphical Design***

Ângela S. L. Pacheco

---

***February 2015***



**Universidade de Évora**

Palácio do Vimioso,  
Largo Marquês de Marialva, 8  
7000-809 Évora, Portugal

E-mail: [cefage@uevora.pt](mailto:cefage@uevora.pt)

Web: [www.cefage.uevora.pt](http://www.cefage.uevora.pt)

Telephone: (+351) 266 706 581

# CONTENTS

FOREWORD .....	1
1. OVERVIEW.....	2
1.1. Aims and Policy .....	2
1.2. Research Interests .....	3
2. ORGANIZATIONAL STRUCTURE .....	4
2.1. Organization Chart.....	4
2.2. Executive Board .....	5
2.3. Research Group Coordinators .....	6
2.4. Doctoral Program Coordinators .....	7
2.5. Branch Coordinators.....	9
2.6. Research Advisory Board .....	10
3. RESEARCH GROUPS.....	11
3.1. Econometrics, Statistics and Operations Research .....	11
3.1.1. Team members.....	11
3.1.2. Publications .....	13
3.1.3. Editorial activities .....	17
3.1.4. Thesis supervision.....	17
3.1.5. Funded research projects .....	20
3.1.6. Presentations at conferences and seminars.....	20
3.2. Finance.....	23
3.2.1. Team members.....	23
3.2.2. Publications .....	25
3.2.3. Editorial activities .....	27
3.2.4. Thesis supervision.....	27
3.2.5. Funded research projects .....	29
3.2.6. Presentations at conferences and seminars .....	29
3.3. Industrial Economics and Business Strategy .....	31
3.3.1. Team members.....	31
3.3.2. Publications .....	34
3.3.3. Editorial activities .....	38
3.3.4. Thesis supervision.....	38

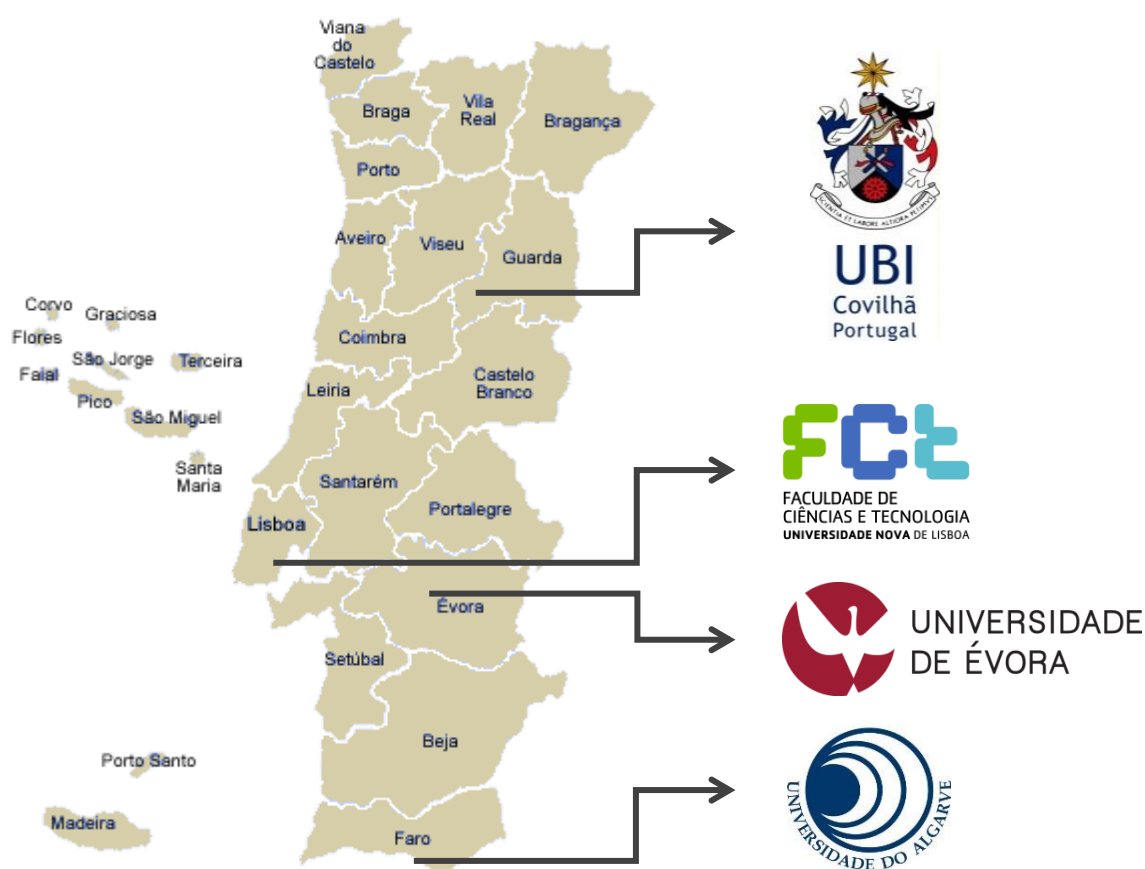
3.3.5. Funded research projects .....	41
3.3.6. Presentations at conferences and seminars.....	41
3.4. Labour, Regional and Macroeconomics .....	46
3.4.1. Team members.....	46
3.4.2. Publications .....	50
3.4.3. Editorial activities .....	53
3.4.4. Thesis supervision.....	54
3.4.5. Funded research projects .....	56
3.4.6. Presentations at conferences and seminars .....	56
4. ORGANIZATION OF SCIENTIFIC EVENTS.....	59
4.1. Conferences and Workshops.....	59
4.2. Courses and Technical Seminars.....	59
4.3. Research Seminars.....	59
5. WORKING-PAPER SERIES .....	62

## FOREWORD

The Center for Advanced Studies in Management and Economics (CEFAGE) is a Portuguese research unit created in 2006 by a group of researchers from the *Universidade de Évora*. Still hosted by this university, CEFAGE has currently also branches located at three other institutions: *Universidade da Beira Interior*, *Universidade do Algarve* and *Universidade Nova de Lisboa* (Faculty of Science and Technology).

The main priority of CEFAGE is to promote high-quality research in Economics and Management. In 2007, in its first evaluation by the Portuguese Foundation for Science and Technology (FCT), CEFAGE achieved the highest grade: *Excellent*. Since 2011, CEFAGE is also in charge of the Doctoral Program in Economics of the consortium *Universidade de Évora / Universidade da Beira Interior* and the Doctoral Program in Management of the *Universidade de Évora*.

Currently, the research unit of CEFAGE has 45 integrated members holding a PhD and 3 members who are currently working towards their PhD. This report describes the research activities of these 48 researchers in 2014.



# 1. OVERVIEW

## 1.1. Aims and Policy

The main priority of CEFAGE is to promote the production and diffusion of high-quality research in Economics and Management. To achieve this goal, it is CEFAGE's policy:

- To offer its members means to produce research publishable in well regarded scientific international journals, supporting the presentation of their on-going work in scientific meetings and the acquisition of books, software packages and databases
- To maintain a ranking of Economics and Management journals, which is used to reward researchers with high-quality publications
- To promote cooperation with researchers from other institutions, through the participation of its members in national and international scientific networks, the participation in joint research projects and co-authorship of scientific articles
- To keep a very stimulating research environment and promote a close cooperation between its members, encouraging the publication of their preliminary work in CEFAGE's Working Paper Series and organizing an internal workshop series in order to facilitate the communication and sharing of ideas among them
- To organize relevant international conferences in the areas of Economics and Management, so as to increase the international visibility of CEFAGE as a research group
- To organize Summer Schools, specialized short workshops and technical seminars in order to keep its members and PhD students up to date with respect to the most recent advances in the fields of Economics and Management and well prepared to use the databases and the software packages available at CEFAGE
- To involve its PhD students on CEFAGE regular research activities, who will have the opportunity to participate in research projects and conferences, to present their work at the annual CEFAGE Doctoral Consortium and to publish their preliminary work in CEFAGE's Working Paper Series

In addition, CEFAGE also supports the consulting activities of its members.

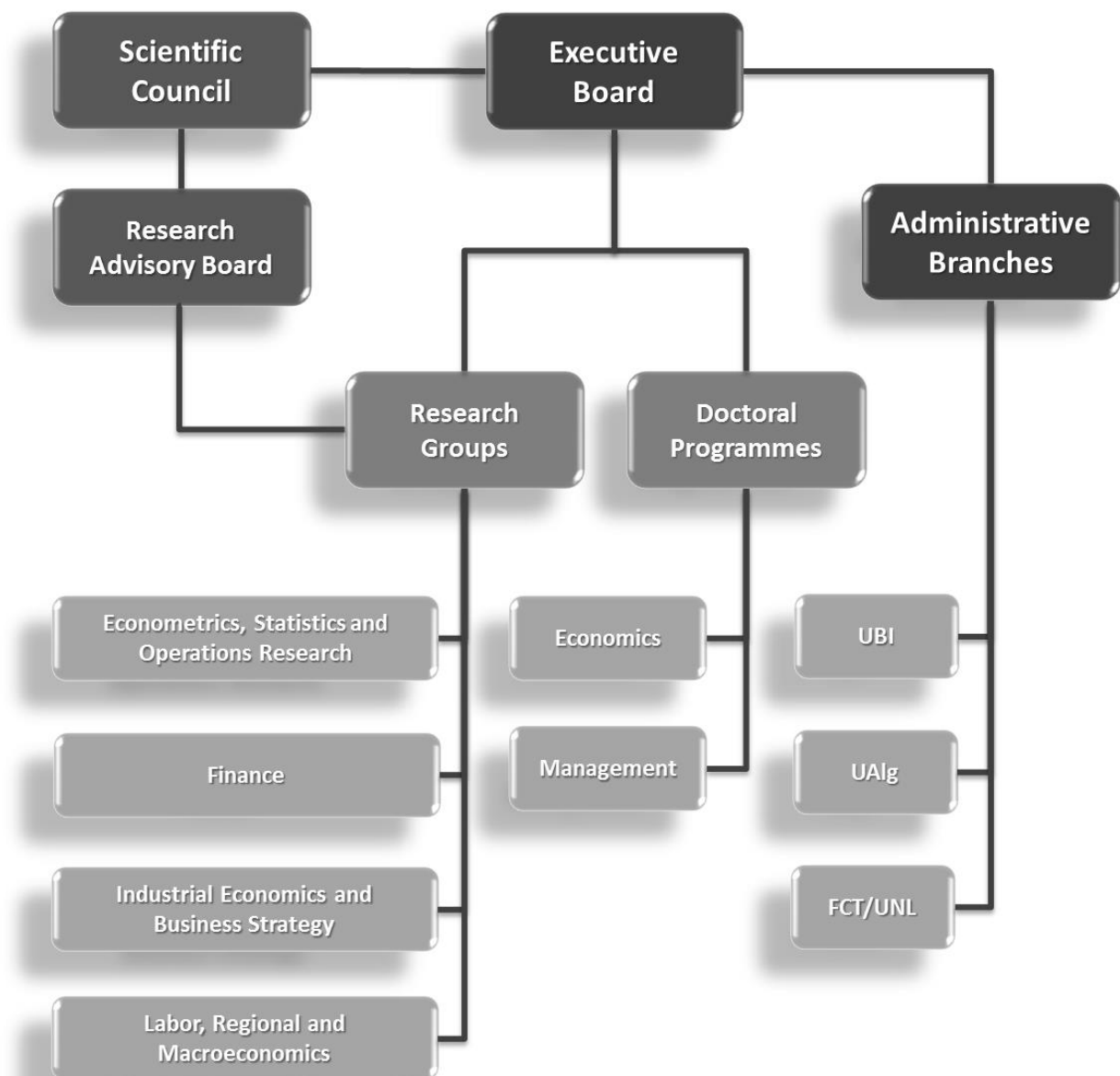
## 1.2. Research Interests

The research interests of CEFAGE-UE's members cover, among other fields, agricultural economics, econometrics, environmental resources, finance, industrial organization, innovation and entrepreneurship, international economics, labour economics, marketing and consumer behaviour, spatial economics and sustainable growth. Therefore, CEFAGE-UE is divided into four research groups:

- Econometrics, Statistics and Operations Research
- Finance
- Industrial Economics and Business Strategy
- Labour, Regional and Macroeconomics

## 2. ORGANIZATIONAL STRUCTURE

### 2.1. Organization Chart





## 2.2. Executive Board



***Maria Aurora Murcho Galego***

**Director**

Ph.D. (Economics), U. Bristol, 1998

M.Sc. (Mathematics Applied to Economics and Business), ISEG/UTL, 1992

B.A. (Economics), U. Évora, 1988



***Cesaltina Maria Pacheco Pires***

**Scientific coordinator**

Ph.D. (Economics), M.I.T., 1994

M.B.A., INSEAD, 1989

B.A. (Economics), U. Nova, 1985



***Andreia Teixeira Marques Dionísio***

**Vice-Director**

Ph.D. (Management), ISCTE, 2006

M.Sc. (Organization and Information Systems), U. Évora, 2001

B.A. (Business Management), U. Évora, 1997



***Carlos Manuel Rodrigues Vieira***

**Vice-Director**

Ph.D. (Economics), U. Loughborough, 1999

M.Sc. (Economics), ISEG/UTL, 1995

B.A. (Economics), U. Évora, 1990

## 2.3. Research Group Coordinators



***Cesaltina Maria Pacheco Pires***

**Coordinator of CEFAGE's Industrial Economics and Business Strategy group**

Ph.D. (Economics), M.I.T., 1994  
M.B.A., INSEAD, 1989  
B.A. (Economics), U. Nova, 1985



***Joaquim José dos Santos Ramalho***

**Coordinator of CEFAGE's Econometrics, Statistics and Operations Research group**

Ph.D. (Economics), U. Bristol, 2002  
M.Sc. (Mathematics Applied to Economics and Business), ISEG/UTL, 1996  
B.A. (Economics), U. Évora, 1993



***Tiago Miguel Guterres Neves Sequeira***

**Coordinator of CEFAGE's Labour, Regional and Macroeconomics group**

Ph.D. (Economics), U. Nova Lisboa, 2004  
B.A. (Economics), U. Beira Interior, 1999



***Zélia Serrasqueiro***

**Coordinator of CEFAGE's Finance group**

Ph.D. (Management), U. Beira Interior, 2001  
B.A. (Management), ISEG/UTL, 1988

## 2.4. Doctoral Program Committees

### Doctoral Program in Economics



***Joaquim José dos Santos Ramalho***

**Director**

Ph.D. (Economics), U. Bristol, 2002

M.Sc. (Mathematics Applied to Economics and Business), ISEG/UTL, 1996

B.A. (Economics), U. Évora, 1993



***Isabel Maria Pereira Viegas Vieira***

**Vice-Director**

Ph.D. (Economics), U. Loughborough, 1999

M.Sc. (Economics), ISEG/UTL, 1995

B.A. (Economics), U. Évora, 1990



***Carlos Manuel Rodrigues Vieira***

**Vice-Director**

Ph.D. (Economics), U. Loughborough, 1999

M.Sc. (Economics), ISEG/UTL, 1995

B.A. (Economics), U. Évora, 1990



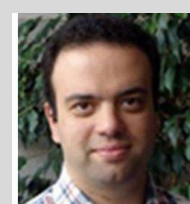
***Paulo Jorge Maçãs Nunes***

**Vice-Director**

Ph.D. (Economics), U. Beira Interior, 2002

M.Sc. (Economic Sciences), U. Beira Interior, 1999

B.A. (Economics), U. Évora, 1995



***Tiago Miguel Guterres Neves Sequeira***

**Vice-Director**

Ph.D. (Economics), U. Nova Lisboa, 2004

B.A. (Economics), U. Beira Interior, 1999

## Doctoral Program in Management



***Cesaltina Maria Pacheco Pires***

**Director**

Ph.D. (Economics), M.I.T., 1994  
M.B.A., INSEAD, 1989  
B.A. (Economics), U. Nova, 1985



***Luís Alberto Godinho Coelho***

**Vice-Director**

Ph.D. (Management), U. Évora, 2006  
M.Sc. (Agricultural Economics), U.Évora, 1996  
B.A. (Management), U.Évora, 1992



***Rui Filipe Cerqueira Quaresma***

**Vice-Director**

Ph.D. (Management), U. Sevilla, 2005  
M.Sc. (Industrial Management and Strategy), ISEG/UTL, 1997  
B.A. (Business Management), U. Évora, 1993

## 2.5. Branch Coordinators



***Duarte Brito***

**Coordinator of CEFAGE-FCT/UNL branch**

Ph.D. (Economics), U. Nova de Lisboa, 2001

B.A. (Economics), U. Nova de Lisboa, 1993



***Sérgio Pereira dos Santos***

**Coordinator of CEFAGE's UAlg branch**

Ph.D. (Management Science), University of Strathclyde, 2004

M.Sc. (Economics and Econometrics), University of Manchester, 1995

B.A. (Business Management), U. Algarve, 1993



***Tiago Miguel Guterres Neves Sequeira***

**Coordinator of CEFAGE's UBI branch**

Ph.D. (Economics), U. Nova Lisboa, 2004

B.A. (Economics), U. Beira Interior, 1999

## 2.6. Research Advisory Board



***Anders Rahbek***

Professor of Economics  
Department of Economics, University of Copenhagen



***Diego Comin***

Associate Professor of Business Administration  
Harvard Business School, Harvard University



***Fiona Scott Morton***

Professor of Economics  
Yale School of Management, Yale University



***Gordon J. Alexander***

John Spooner Chair in Investment Management  
Carlson School of Management, University of Minnesota



***Konrad Stahl***

Professor of Economics  
University of Mannheim



***Luís M.B. Cabral***

W. R. Berkley Term Professor of Economics and Business  
Department of Economics, Stern School of Business, New York University



***Mehmet Caner***

Thurman-Raytheon Distinguished Professor of Economics  
Department of Economics, North Carolina State University

## 3. RESEARCH GROUPS

### 3.1. Econometrics, Statistics and Operations Research

#### 3.1.1. Team members



**Andreia Teixeira Marques Dionísio Basílio**

UNIVERSIDADE DE ÉVORA

Ph.D. (Management), ISCTE, 2006

M.Sc. (Organization and Information Systems), U. Évora, 2001

B.A. (Business Management), U. Évora, 1997

Research interests: *Econometrics; Econophysics; Financial Markets.*



**Carla Alexandra da Encarnação Filipe Amado**

UNIVERSIDADE DO ALGARVE

Ph.D. (Industrial and Business Studies), University of Warwick, 2003

M.Sc. (Economics and Econometrics), University of Manchester, 1996

B.A. (Business Studies), U. Algarve, 1995

Research interests: *Performance Measurement and Management; Efficiency, Effectiveness and Equity Assessment in the Provision of Health Services.*



**Carlos Alberto Falcão Marques**

UNIVERSIDADE DE ÉVORA

Ph.D. (Agricultural Economics), U. Purdue, 1988

M.Sc. (Agricultural Economics), U. Purdue, 1985

B.A. (Business Management), U. Évora, 1981

Research interests: *Agricultural Policy, Development and Trade; Natural Resources and Environmental Economics.*



**Esmeralda Jesus Ratinho Lopes Arranhado Ramalho**

UNIVERSIDADE DE ÉVORA

Ph.D. (Economics), U. Bristol, 2002

M.Sc. (Mathematics Applied to Economics and Business), ISEG/UTL, 1996

B.A. (Economics), U. Évora, 1994

Research interests: *Microeconometrics.*



**Joaquim José dos Santos Ramalho**

UNIVERSIDADE DE ÉVORA

Ph.D. (Economics), U. Bristol, 2002

M.Sc. (Mathematics Applied to Economics and Business), ISEG/UTL, 1996

B.A. (Economics), U. Évora, 1993

Research interests: *Microeconometrics; Fractional Regression Models; GMM and GEL Estimation and Inference; Applied Corporate Finance.*



**Luís Alberto Godinho Coelho**

UNIVERSIDADE DE ÉVORA

Ph.D. (Management), U. Évora, 2006

M.Sc. (Agricultural Economics), U.Évora, 1996

B.A. (Management), U.Évora, 1992

Research interests: *Decision Theory; Mathematical Programming; Agricultural Management.*



**Paulo Jorge Silveira Ferreira**

INSTITUTO POLITÉCNICO DE PORTALEGRE

Ph.D. (Management), Universidade de Évora, 2012

M.Sc. (Economics), Universidade de Évora, 2006

B.A. (Economics), Universidade de Évora, 2003

Research interests: *Econometrics; Monetary and Financial Economics; Entrepreneurship and Innovation; Econophysics.*



**Paulo Manuel Marques Rodrigues**

BANCO DE PORTUGAL

Ph.D. (Econometrics), University of Manchester, 1998

M.Sc. (Economics and Econometrics), University of Manchester, 1995

B.A. (Business Management), Universidade do Algarve, 1993

Research interests: *Business Cycle Modelling and Monitorisation; Macro-economic Modelling and Forecasting; Nonstationarity and Volatility; Structural Breaks.*





**Pedro Damião de Sousa Henriques**

UNIVERSIDADE DE ÉVORA

Ph.D. (Agricultural Economics), University of Reading, 1995

M.Sc. (Agricultural Economics), Ohio State University, 1987

B.A. (Agronomic Engineering), Universidade Técnica de Lisboa, 1982

Research interests: *Agricultural Economics and Policies; Rural Development; Agriculture, Natural Resources and Environment.*



**Rui Manuel de Sousa Fragoso**

UNIVERSIDADE DE ÉVORA

Ph.D. (Management), U. Évora, 2001

M.Sc. (Agricultural Economics), I. Agronomique Méditerranéen de Montpellier, 1996

B.A. (Animal Production Engineering), U. Évora, 1993

Research interests: *Agribusiness and Agricultural Economics; Natural Resources and Environmental Economics.*



**Sérgio Pereira dos Santos**

UNIVERSIDADE DO ALGARVE

Ph.D. (Management Science), University of Strathclyde, 2004

M.Sc. (Economics and Econometrics), University of Manchester, 1995

B.A. (Business Management), U. Algarve, 1993

Research interests: *Performance Measurement and Management; Efficiency Assessment and Data Envelopment Analysis; Strategy Implementation.*

### 3.1.2. Publications

#### i) Articles published in scientific peer-review journals

##### i.1) Articles published in selected journals (indexed in CEFAGE ranking)

Forthcoming:

Castro, T.B., **P.M.M. Rodrigues**, A. M. R. Taylor, "On the Behaviour of Phillips-Perron Tests in the Presence of Persistent Cycles", *Oxford Bulletin of Economics and Statistics*, forthcoming.

Hassler, U., **P.M.M. Rodrigues**, A. Rubia, "Persistence in the banking industry: Fractional integration and breaks in memory", *Journal of Empirical Finance*, forthcoming.

[dx.doi.org/10.1016/j.jempfin.2014.03.004](https://doi.org/10.1016/j.jempfin.2014.03.004)

Filipe, M.N.M., F.A.F. Ferreira, **S.P. Santos**, "A multiple criteria information system for pedagogical evaluation and professional development of teachers", *Journal of the Operational Research Society*, forthcoming.

([dx.doi.org/10.1057/jors.2014.129](https://doi.org/10.1057/jors.2014.129))

Murteira, J.M.R., **J.J.S. Ramalho**, "Regression analysis of multivariate fractional data", *Econometric Reviews*, forthcoming.

([dx.doi.org/10.1080/07474938.2013.806849](https://doi.org/10.1080/07474938.2013.806849))

**Ramalho, E.A., J.J.S. Ramalho**, "Moment-based estimation of nonlinear regression models with boundary outcomes and heterogeneity, with applications to non-negative and fractional responses", *Econometric Reviews*, forthcoming.

([dx.doi.org/10.1080/07474938.2014.976531](https://doi.org/10.1080/07474938.2014.976531))

Serra, J., **A. Correia, P.M.M. Rodrigues**, "Tourist spending dynamics in Algarve. A cross-sectional analysis", *Tourism Economics*. Forthcoming.

---

## 2014

**Ferreira, P., A. Dionísio** (2014), "Revisiting serial dependence in the stock markets of the G7 countries, Portugal, Spain and Greece", *Applied Financial Economics*, 24(5),319-331.

Ferreira, F.A.F., **S.P. Santos**, C.S.E. Marques, J.J.M. Ferreira (2014), "Assessing credit risk of mortgage lending using MACBETH: A methodological framework", *Management Decision*, 52(2), 182-206.

Martins, M.B., A.M. Xavier, **R. Fragoso** (2014), "A bioeconomic forest management model for the Mediterranean forests: a multi-criteria approach", *Journal of Multi-Criteria Decision Analysis*, 21(1-2), 101–111.

([dx.doi.org/10.1002/mcda.1495](https://doi.org/10.1002/mcda.1495))

**Ramalho, E.A., J.J.S. Ramalho, J.M.R. Murteira** (2014), "A generalized goodness-of-functional form test for binary and fractional regression models", *Manchester School*, 82(4), 488-507.

([dx.doi.org/10.1111/manc.12032](https://doi.org/10.1111/manc.12032))

**Santos, S.P., C.A.F. Amado** (2014), "On the need for reform of the Portuguese Judicial System - Does Data Envelopment Analysis assessment support it?", *Omega*, 47,1-16.

([dx.doi.org/10.1016/j.omega.2014.02.007](https://doi.org/10.1016/j.omega.2014.02.007))

Sobreira, N., L.C. Nunes, **P.M.M. Rodrigues** (2014), "Characterizing economic growth paths based on new structural change tests", *Economic Inquiry*, 52(2), 845-861.

### i.2) Articles published in ISI journals (not indexed in CEFAGE ranking)

---

#### Forthcoming:

**Cândido, C.J.F., S.P. Santos**, "Strategy implementation: What is the failure rate?", *Journal of Management & Organization*, forthcoming.

Ferreira F.A.F., **S.P. Santos**, "Comparing trade-off adjustments in credit risk analysis of mortgage loans using AHP, Delphi and MACBETH ", *International Journal of Strategic Property Management*, forthcoming.

Martins, L., **P.M.M. Rodrigues**, "Testing for persistence change in fractionally integrated models: an application to world inflation rates", *Computational Statistics and Data Analysis*, forthcoming.

Felicio, J.A., V. Caldeirinha, **A. Dionísio**, “The effect of port and container terminal characteristics on terminal performance”, *Maritime, Economics and Logistics*, forthcoming

([dx.doi.org/10.1057/mel.2014.33](https://doi.org/10.1057/mel.2014.33))

2014

Ferreira, F.A., **S.P. Santos**, V.M.C. Dias (2014), “An AHP-based approach to credit risk evaluation of mortgage loans”, *International Journal of Strategic Property Management*, 18(1), 38-55

([dx.doi.org/10.3846/1648715X.2013.863812](https://doi.org/10.3846/1648715X.2013.863812))

Ferreira, F.A., **S.P. Santos**, **P.M.M. Rodrigues**, R. Spahr (2014), “Evaluating retail banking service quality and convenience with MCDA techniques: a case study at the bank branch level”, *Journal of Business Economics and Management*, 15(1), 1-21.

([dx.doi.org/10.3846/16111699.2012.673504](https://doi.org/10.3846/16111699.2012.673504))

Ferreira, F.A., **S.P. Santos**, **P.M.M. Rodrigues**, R. Spahr (2014) “How to create indices for bank branch financial performance measurement using MCDA techniques: an illustrative example”, *Journal of Business Economics and Management*, 15(4), 708-728.

([dx.doi.org/10.3846/16111699.2012](https://doi.org/10.3846/16111699.2012))

**Ramalho, E.A., J.J.S. Ramalho** (2014), “Convenient links for the estimation of hedonic price indexes: the case of unique, infrequently traded assets”, *Statistica Neerlandica*, 68(2), 91-117.

([dx.doi.org/10.1111/stan.12024](https://doi.org/10.1111/stan.12024))

### i.3) Articles published in other peer-reviewed journals

Forthcoming:

Daniel, A.C.M., **P.M.M. Rodrigues**, “Modelação não causal da procura turística em Portugal: A metodologia Box-Jenkins, os modelos naïve e o modelo de alisamento exponencial”, *Revista Turismo e Desenvolvimento*, forthcoming.

**Fragoso, R.**, “Sustainable development and guidance to entrepreneurship in unfavoured regions: the case of Alentejo region”, *World Review of Entrepreneurship, Management and Sustainable Development*, forthcoming.

Ramos, C., **P.M.M. Rodrigues**, F. Perna, “Sistemas e tecnologias de informação no sector turístico”, *Revista Turismo e Desenvolvimento*, forthcoming.

Simões, A. J., J. Ventura, J., **L.A.G. Coelho**, “Foreign Direct Investment and Fiscal Policy – A Literature Survey”, *Journal of Taxation of Investments*, forthcoming.

2014

Bettencourt, E. M. V., M. Tilman, V. Narciso, M. L. S. Carvalho, **P.D.S. Henriques** (2014), “The role of livestock functions in the well being and development of Timor-Leste rural communities”, *Livestock Research for Rural Development*, 26(4), article #69.

Serra, J., **A. Correia, P.M.M. Rodrigues** (2014), "A comparative analysis of tourism destination demand in Portugal", *Journal of Destination Marketing and Management*, 2, 221-227.

([dx.doi.org/10.1016/j.jdmm.2013.10.002](https://doi.org/10.1016/j.jdmm.2013.10.002))

Sitorius, L. T., **P. D. Henriques, M. R. Lucas** (2014), "Estudo das preferências dos consumidores de tomate e beringela em Díli, Timor-Leste", *Revista Veritas*, 3, 53-75.

Vicente, J.M., **A. Dionísio**, M. Oliveira, C. Simão (2014), "As potencialidades do mercado de aviação chinesa par o Aeroporto Internacional de Lisboa: análise de modelagem empírica", *Journal of Transport Literature*, 8 (4), 252-278.

Xavier, A., M. B. C. Freitas, **R. Fragoso** (2014), "Disaggregation of Statistical Livestock Data Using the Entropy Approach", *Advances in Operations Research*, 2014, Article ID 397675.

([dx.doi.org/10.1155/2014/397675](https://doi.org/10.1155/2014/397675))

## ii) Articles and chapters published in scientific books

Forthcoming:

Branco, M., **P.D.S. Henriques**, "The market economy and the human right to water in Africa", in A. Cascão (ed.), *Water in Africa, Afro-pessimism or Afro-optimism*, forthcoming.

2014

Baptista, F., L.L. Silva, C. de Visser, J. Gołaszewski, A. Meyer-Aurich, D. Briassoulis, H. Mikkola, D. Murcho, **C.A.F. Marques**, J.R. Marques da Silva, M. Rosado (2014), "Energy efficiency in agriculture. Showcase and alternatives for wheat production in Portugal", in E. Lorencowicz, F. Baptista, L.L. Silva, J.R. Marques da Silva (eds.), *Sustainable agriculture – Poland and Portugal*, University of Life Sciences, Lublin, Poland and University of Évora, Portugal, pp. 45-59. (ISBN 978-83-937433-1-5).

**Fragoso, R.**, C. Noéme (2014), "Impacte económico das alterações climáticas no regadio e definição de medidas de adaptação", in J.L. Teixeira, J. Rolim (eds), *Impacte das alterações climáticas nos sistemas de regadio no Alentejo*, IsaPress, pp. 79-104 (ISBN 978-972-8669-59-1).

**Henriques, P.D.**, M.L.S. Carvalho, V. Narciso, C.C. de Deus, **M.R. Lucas** (2014), "Agricultura Familiar em Timor Leste: da Colonização Portuguesa à Instauração da Independência", in V. Paulino (eds), *Timor-Leste nos estudos interdisciplinares*, Díli: Unidade de Produção e Disseminação do Conhecimento do PPGP-UNTL, pp.181-193 (ISBN: 978-989-98981-0-3)

**Marques, C.A.F.**, (2014), "The evolution of the Portuguese agriculture in the context of the European Union", in E. Lorencowicz, F. Baptista, L.L. Silva, J.R. Marques da Silva (eds.), *Sustainable agriculture – Poland and Portugal*, University of Life Sciences, Lublin, Poland and University of Évora, Portugal, pp. 13-27 (ISBN 978-83-937433-1-5).

Silva, J.A., **S.P. Santos** (2014), "A análise input-output na avaliação do impacto económico das universidades – O caso da Universidade do Algarve ", in S. Saúde, C. Borralho, I. Féria, S. Lopes (eds.), *Os Impactos Socioeconómicos do Ensino Superior – Um retrato a partir de estudos de caso de Portugal e Espanha*, Edições Sílabo, pp. 109-128 (ISBN: 978-972-618-741-7).

### iii) Scientific, pedagogical and technical books

2014

**Ferreira, P.**, (2014) *Exercícios de Econometria*, Rei dos Livros (ISBN: 9789898305596)

**Vidigal, J., P. Ferreira**, (2014) *Princípios de Gestão Financeira*, Rei dos Livros (ISBN: 9789898305770)

### 3.1.3. Editorial activities

#### i) Edition of scientific books

---

#### ii) Edition of journal issues

Member: Carla Amado

Journal: *Global Economics and Management Review*

### 3.1.4. Thesis supervision

#### i) Ph.D. supervisions

Title: *Estudos Sobre a Solidez do Sistema Bancário da OCDE: Crises Bancárias, Endividamento e Incumprimento no Período 1991 a 2009*

Author: Cristina Pereira

Supervisor(s): **Jacinto Vidigal da Silva, Joaquim J.S. Ramalho**

Degree: Ph.D. (Management)

Institution: Universidade de Évora

Year: 2014

Title: *Influência das Características do Porto/Terminal de Contentores no seu Desempenho"*

Author: Vítor Manuel dos Ramos Caldeirinha

Supervisor(s): José Augusto de Jesus Felício , **Andreia Teixeira Dionísio**

Degree: Ph.D. (Management)

Institution: Universidade de Évora

Year: 2014

Title: *Heterogeneity and Dynamics in Tourists' Motivations: evidence from Algarve Tourists' Preferences*

Author: Jaime Serra

Supervisor(s): **Antónia Correia, Paulo Rodrigues**

Degree: Ph.D. (tourism)

Institution: Universidade do Algarve

Year: 2014

Title: *A Importância dos Benefícios Fiscais para as Empresas da Região do Interior*

Author: António Fernandes

Supervisor(s): **Zélia Serrasqueiro**

Degree: Ph.D. (Management)

Institution: Universidade da Beira Interior

Year: 2014

## ii) M.Sc. supervisions

Title: *Estudo de Mercado de um Cosmético Facial: Máscara Facial de Pó de Turmalina Ultrafino*

Author: Bárbara Gaia

Supervisor(s): **Andreia Dionísio**, Marta Silvério

Degree: M.Sc. (Management- Marketing specialization)

Institution: Universidade de Évora

Year: 2014

Title: *Segmentação dos Mercados nos Centros Hípicos*

Author: António Martins

Supervisor(s): **Andreia Dionísio**, Marta Silvério

Degree: M.Sc. (Management- Marketing specialization)

Institution: Universidade de Évora

Year: 2014

Title: *A implementação do Balanced Scorecard nas Instituições de Ensino Superior em Portugal – Análise da sua Importância para a Melhoria do Desempenho Organizacional e das Dificuldades de Implementação*

Author: Elsa M.G.P. Mendonça

Supervisor(s): **Carlos Cândido**, **Sergio Santos**

Degree: M.Sc. (Business Management)

Institution: Universidade do Algarve

Year: 2014

Title: *Conceção de um sistema integrado de avaliação de desempenho dos serviços de saúde materna e neonatal em Portugal*

Author: Sílvia Liliana Teixeira Mendes

Supervisor(s): **Carla Amado**, **Sérgio Santos**

Degree: M.Sc. (Health Care Services Management)

Institution: Universidade do Algarve

Year: 2014

Title: *Indicadores de Desempenho das Unidades de Cuidados na Comunidade: Um Estudo Exploratório Sobre a Adequabilidade de um Grupo de Indicadores*

Author: Elsa Inês Estevas da Silva Maia

Supervisor(s): **Carla amado**, José Queimado

Degree: M.Sc. (Health Care Services Management)

Institution: Universidade do Algarve

Year: 2014

Title: *Os Impactos da Actual Crise Financeira na Estrutura de Capitais das Empresas Portuguesas*

Author: Duarte Serrano

Supervisor(s): **Carlos Vieira, Joaquim J.S. Ramalho**

Degree: M.Sc. (Management)

Institution: Universidade de Évora

Year: 2014

Title: *Exposição Cambial e o Efeito dos Instrumentos Financeiros de Gestão e Cobertura do Risco Cambial: Evidência Empírica das Empresas do PSI 20*

Author: Bruno Borges

Supervisor(s): Jorge Bravo, **Joaquim J.S. Ramalho**

Degree: M.Sc. (Management)

Institution: Universidade de Évora

Year: 2014

Title: *Avaliação de Eficiência e Eficácia de Centros de Emprego: O caso Português*

Author: Vitor Hugo Sabóia Martins

Supervisor(s): **Sérgio Santos, Carla Amado**

Degree: M.Sc. (Management)

Institution: Universidade do Algarve

Year: 2014

Title: *Assessing the Effectiveness of Noncommunicable Diseases Control and Prevention Using Data Envelopment Analysis: An International Comparison*

Author: Ana Cristina soares Nascimento

Supervisor(s): **Carla Amado, Sérgio Santos**

Degree: M.Sc. (Health Care Services Management)

Institution: Universidade do Algarve

Year: 2014

Title: *Determinantes da Cadeia de Valor no Pão Tradicional Alentejano*

Author: João Francisco Laranjinha Ruivo

Supervisor(s): **Maria Raquel Lucas, Rui Fragoso**

Degree: M.Sc. (Applied Economics and Management)

Institution: Universidade de Évora

Year: 2014

Title: *Plano de Negócios Monsaluz, Sociedade Agrícola Lda*

Author: José Eduardo Lopes Rente

Supervisor(s): **Carlos Marques, Maria Raquel Lucas**

Degree: M.Sc. (Applied Economics and Management)

Institution: Universidade de Évora

Year: 2014

Title: *Estudo das Preferências dos Consumidores de Tomate e beringela em Díli, Timor-Leste*

Author: Lamdor Tiurmauli Sitorus

Supervisor(s): **Maria Raquel Lucas, Pedro Damião Henriques**

Degree: M.Sc. (Applied Economics and Management, Agribusiness specialization)

Institution: Universidade Nacional de Timor Lorosa'e

Year: 2014

Title: *Análise da influência da utilização dos factores de produção no aumento da produção de arroz no sub-distrito Maliana, distrito de Bobonaro, Timor-Leste*

Author: João Ferreira Rendes Bean Loly

Supervisor(s): Jorge Azevedo Santos, **Pedro Damião Henriques**

Degree: M.Sc. ( Statistical modelling and data analysis)

Institution: Universidade de Évora

Year: 2014

### 3.1.5. Funded research projects

#### i) Projects funded by national science agencies

Title: *Theoretical Developments in the Regression Analysis of Fractional Data and its Applications to Finance*

CEFAGE researchers: **Joaquim J.S. Ramalho** (principal investigator), **Esmeralda Ramalho**

Partner institutions: CEMAPRE, Universidade de Coimbra, Universidade do Algarve

Funding: 91 000€ (FCT), ref. PTDC/EGE-ECO/119148/2010

Period: 01/03/2012-28/02/2015

Title: *Evaluation of climate changes impacts on irrigated systems and definition of adaptation measures*

CEFAGE-UE researchers: **Rui Fragoso**

Partner institutions: --- Universidade de Lisboa – ISA e Universidade de Évora (ICAAM & CEFAGE)

Funding: 98 256€ (FCT), ref. PTDC/AAC-AMB/113639/2009

Period: 2011 – 2014

#### ii) Projects funded by international research programs

Title: *FoodMed - My Food - My Medicine*

CEFAGE-UE researchers: **Maria Raquel Lucas, Rui Fragoso**, Cristina Marreiros

Partner institutions: Agricultural University of Plovdiv (Bulgaria), Universidad Politécnica de Madrid (Spain), Training 2000 (Italy), European Centre of Education and Development (Bulgaria), ALPHA LTD (Greece), Brithis Hellenic College (Greece).

Funding: 107 112€ -European Union, Education and Culture DG - Lifelong Learning Programme

Period: 01/11/2013 - 31/10/2015

### 3.1.6. Presentations at conferences and seminars

#### i) Presentations at international conferences

**Amado, C.A.F., S.P. Santos, A.C. Nascimento**, "Assessing the Effectiveness of Noncommunicable Diseases Prevention and Control Using Data Envelopment Analysis: An International Comparison", *IFORS2014: 20<sup>th</sup> Conference of the International Federation of Operational Research Societies*, Barcelona, Espanha, 13-18/07/2014.

Bettencourt, M., M. Tilman, V. Narciso, M.L.S. Carvalho, **P.D. Henriques**, "The functions and role of livestock species in wellbeing and development of rural communities of Timor-Leste", *The 5th International Conference of ARSA From Challenges to Prosperous Future in the Rural Asia*, National University of Laos, Vientiane, 02-05/09/ 2014.



Caldeirinha, V. , **A. Dionísio**, J.A. Felício, “The container terminal characteristics and customer's satisfaction”, *2<sup>nd</sup> International Conference on Maritime, Technology and Engineering*, Lisbon, Portugal, 15-15/10/2014.

**Coelho, L.A.G.**, “Cumulative prospect theory for portfolio selection optimization in risk context”, *FUR 2014 – The 16th conference on the Foundations of Utility and Risk*, Erasmus University of Rotterdam, Rotterdam, The Netherlands, 30/06-02/07/2014.

**Coelho, L.A.G.**, “Cumulative prospect theory for portfolio selection optimization in risk context”, *Optimization 2014*, School of Engineering, University of Minho, Guimarães, Portugal, 28-30/07/2014.

**Correia, A.**, J. Serra, **P.M.M. Rodrigues**, “Yielding tourists preferences: The case of the Algarve”, *49th TRC Meeting*, Innsbruck, Áustria, 10-13/04/2014.

Deus, C., V. Narciso, M.L.S. Carvalho, **P.D. Henriques**, “The wellbeing and satisfaction of coffee farmer in Timor-Leste with its membership to the “Cooperative Café Timor” (CCT), *The 5th International Conference of ARSA From Challenges to Prosperous Future in the Rural Asia*, National University of Laos, Vientiane, 02-05/09/2014.

Diverio, T., **R. Fragoso**, “Determinantes para uma avaliação da política energética da união europeia na sustentabilidade da produção brasileira de biocombustíveis”, *52º Congresso da Sociedade Brasileira de Economia, Administração e Sociologia Rural*, Goiânia, Brasil, 27- 30/07/2014.

**Ferreira, P.**, **A. Dionísio**, “Revisiting Serial Dependence in the Stock Markets of the G7 Countries, Portugal, Spain and Greece”, *Econometric Methods for Banking and Finance Conference*, Lisboa, Portugal, 12-13/09/2014.

**Ferreira, P.**, **A. Dionísio**, S. Seyed, “Globalization of Stock Markets: Long-range Dependences”, *2014 Singular Spectrum Analysis (SSA) Workshop*, Bournemouth, United Kingdom , 08-09/09/2014.

**Fragoso, R.**, **M.C. Rego**, V. Bushenkov, “Clustering of territorial áreas: a multi-criteria districting problema”, *54<sup>th</sup> ERSA Congress*, Saint Petersburg, Russia, 26-29/08/2014.

**Fragoso, R.**, **C.A.F. Marques**, “The economic impacts f alternative water pricing policies in the Alentejo region”, *XIVth Congress of the European Association of Agricultural Economics*, Ljubljana, Slovenia, 26-29/08/2014.

**Fragoso, R.**, V. Bushenkov, **C.A.F. Marques**, “Integrated water management using feasible goals method and interactive decision maps: the case of odivelas irrigation”, *52º Congresso da Sociedade Brasileira de Economia, Administração e Sociologia Rural*, Goiânia, Brasil, 27 -30/07/2014.

**Fragoso, R.**, **C.A.F. Marques**, “Alternative water pricing policies in alentejo region: an estimation of the optimality conditions”, *52º Congresso da Sociedade Brasileira de Economia, Administração e Sociologia Rural*, Goiânia, Brasil, 27 -30/07/2014.

**Henriques, P.D.**, J. Silva, V. Narciso, M.L.S. Carvalho, “Rice production techniques and policies in Timor-Leste: a comparison between Portuguese colonization, Indonesian occupation and post-independence periods”, *The 5th International Conference of ARSA From Challenges to Prosperous Future in the Rural Asia*, National University of Laos, Vientiane, 2-5/09/2014.

Santos, M.J.P., C. Machado-Santos, **P.D. Henriques**, “Eficiência das explorações de bovinos de corte em Portugal/Portuguese efficiency of beef production farms”, *52º Congresso da Sociedade de Economia,*

*Administração e Sociologia Rural, Heterogeneidade e suas implicações no rural brasileiro*, Goiânia, Brasil, 27-30/07/2014.

Nascimento, A.C., **C.A.F. Amado, S.P. Santos**. "Assessing the Effectiveness of Noncommunicable Diseases Prevention and Control Using Data Envelopment Analysis: An International Comparison", *ORAHS2014: 40th annual meeting of the EURO Working Group on Operational Research Applied to Health Services*, Lisboa, Portugal, 20-25/07/2014.

Narciso V., **P.D. Henriques**, "Women, land and empowerment: the matrilineal factor The case of 3 communities in Bobonaro District, Timor-Leste", *The 5th International Conference of ARSA From Challenges to Prosperous Future in the Rural Asia*, National University of Laos, Vientiane, 02-05/09/2014.

Pereira, C., **J.J.S. Ramalho, J.V. Silva**, "The main determinants of banking crises and the fragility of regulation: evidence from OECD countries", *8<sup>th</sup> Annual Meeting of the Portuguese Economic Journal*, University of Minho, Portugal, 04-05/07/2014.

Pereira, C., **J.J.S. Ramalho, J.V. Silva**, "The main determinants of banking crises and the fragility of regulation: evidence from OECD countries", *8<sup>th</sup> Portuguese Finance Network Conference*, University of Algarve, Portugal, 19-20/06/2014.

Rita, R., **J.J.S. Ramalho, J.V. Silva**, "The impact of family ownership and firm size on capital structure decisions", *8<sup>th</sup> Portuguese Finance Network Conference*, University of Algarve, Portugal, 19-20/06/2014.

**Santos, S.P., C.A.F. Amado**, "Performance Measurement in the Hospitality and Tourism Industry: Overview and Future Research Directions", *2<sup>nd</sup> International Conference on Tourism and Hospitality & 2014 Tourism Policy Forum Summit*, Tainan, Taiwan, 22-23/10/2014.

**Santos, S.P., C.A.F. Amado**, A.L.F. Manso, "Efficiency and seasonality in the Portuguese Post Offices and Postal Distribution Centers", *IFORS2014: 20<sup>th</sup> Conference of the International Federation of Operational Research Societies*, Barcelona, Espanha, 13-18/07/2014.

## ii) Presentations at iberian or portuguese-spoken conferences

Caldas, P., P.Neto, **A. Dionísio**, "Did the European Union Investments and Funds Programmes improved Performance of Portuguese Local Government?", *20<sup>o</sup> congresso da APDR*, Universidade de Évora, Portugal, 10-11/07/2014.

**Henriques, P.D.**, M.L.S. Carvalho, V. Narciso, **M.R. Lucas**, E. V. Bettencourt, "A agricultura familiar em Timor-Leste: da colonização portuguesa à restauração da independência", *IV Encontro RuralRePort Rede de História Rural em Português - Agricultura Familiar na História: comunidades, economias e paisagens*, Palmela, Portugal, 27 – 28/06/2014.

## iii) Seminars presented at other institutions

---

## 3.2. Finance

### 3.2.1. Team members



**Cristina Maria Pereira Viegas**

UNIVERSIDADE DO ALGARVE

Ph.D. (Management), Universidade do Algarve, 2006

M.Sc. (Management), ISEG/UTL, 1993

B.A. (Business Management), Universidade do Algarve, 1988

Research interests: *Financial Markets; Financial Derivatives; Real Options; Mathematical Finance.*



**Elisabete Gomes Santana Félix**

UNIVERSIDADE DE ÉVORA

Ph.D. (Management), ISCTE, 2008

M.Sc. (Management Sciences), INDEG/ISCTE, 1999

B.A. (Business Management), U. Évora, 1993

Research interests: *Venture Capital; Real Options; Elaboration and Financial Analysis of Investment Projects; Social Entrepreneurship.*



**Jacinto António Setúbal Vidigal da Silva**

UNIVERSIDADE DE ÉVORA

Ph.D. (Business Management), U. Évora, 1997

B.A. (Business Management), U. Évora, 1983

Research interests: *Business; Financial Management; Managerial Economics.*



**Jorge Luís Pedreira Murteira Marques Casas Novas**

UNIVERSIDADE DE ÉVORA

Ph.D. (Management), U. Évora, 2003

M.Sc. (Finance), ISCTE, 2000

B.A. (Business Management), U. Évora, 1995

Research interests: *Management and Cost Accounting; Performance Management; Value Creation Process.*



**Paulo Jorge Maçãs Nunes**

UNIVERSIDADE DA BEIRA INTERIOR

Ph.D. (Economics), U. Beira Interior, 2002

M.Sc. (Economic Sciences), U. Beira Interior, 1999

B.A. (Economics), U. Évora, 1995

Research interests: *Corporate Finance; Industrial Economics; Applied Economics.*



**Victor Augusto Mendes dos Santos**

COMISSÃO DO MERCADO DE VALORES MOBILIÁRIOS

Ph.D. (Economics), U. South Carolina, 1990,

B.A. (Economics), U. Porto, 1982.

Research interests: *Financial Economics; Behavioral Finance; Corporate Governance.*



**Zélia Serrasqueiro**

UNIVERSIDADE DA BEIRA INTERIOR

Ph.D. (Management), U. Beira Interior, 2001

B.A. (Management), ISEG/UTL, 1988

Research interests: *Corporate Finance; Financial Institutions and Small Business Financing; Small Business Management and Entrepreneurship.*



**Ricardo Vinícius Dias Jordão**

Ph.D. Student

M.Sc. (Accounting and Controlling), Federal University of Minas Gerais, 2009

M.Sc. (Business Administration), Dom Cabral Foundation, 2003

B.A. (Accounting and Finance), Federal University of Minas Gerais, 2000

Research interests: *Accounting and Finance; Management Accounting and Control Systems; Mergers, Acquisitions and Business Associations; Knowledge Management and Intellectual Capital; Strategy and Competitiveness; Management in Organizations.*

### 3.2.2. Publications

#### i) Articles published in scientific peer-review journals

##### i.1) Articles published in selected journals (indexed in CEFAGE ranking)

Forthcoming:

Alves, C., **V.M. Santos**, P. Pereira da Silva, “Do Stress Tests Matter? A Study on the Impact of the Disclosure of Stress Test Results on European Financial Stocks and CDS Markets”, *Applied Economics*, forthcoming.

**Serrasqueiro, Z., P.M. Nunes**, “Determinants of Growth in Portuguese Small and Medium-Sized Hotels: Empirical Evidence Using Panel Data Models”, *Tourism Economics*, forthcoming.

**Serrasqueiro, Z., P.M. Nunes, J.V. Silva**, “The Influence of Age and Size on Family-Owned Firms’ Financing Decisions: Empirical Evidence Using Panel Data”, *Long Range Planning*, forthcoming.

**Serrasqueiro, Z., P.M. Nunes**, M. da Rocha Armada, “Capital Structure Decisions: Old Issues, New Insights From High-Tech SMEs”, *The European Journal of Finance*, forthcoming.

**Nunes, P.M., Z. Serrasqueiro** (2015), “Profitability Determinants of Portuguese Knowledge-Intensive Business Services: Empirical Evidence Using Panel Data Models”, *Applied Economics Letters*, 22(1), 51-56.

2014

**Félix, E.G.S., C.P. Pires**, M.A. Gulamhussen (2014), “The exit decision in the european venture capital market”, *Quantitative Finance*, 14(6), 1115-1130

[dx.doi.org/10.1080/14697688.2012.714903](https://doi.org/10.1080/14697688.2012.714903)

**Jordão, R., A.A. Souza, E.A. Avelar** (2014), “Organizational culture and post-acquisition changes in management control systems: an analysis of a successful Brazilian case”, *Journal of Business Research*, 67(4), 542-549.

[dx.doi.org/10.1016/j.jbusres.2013.11.011](https://doi.org/10.1016/j.jbusres.2013.11.011)

**Nunes, J.C., E.G.S. Félix, C.P. Pires** (2014), “Which criteria matter most in the evaluation of venture capital investments?”, *Journal of Small Business and Enterprise Development*, 21(3), 505 – 527

[dx.doi.org/10.1108/JSBED-10-2013-0165](https://doi.org/10.1108/JSBED-10-2013-0165)

**Serrasqueiro, Z., P.M. Nunes** (2014), “Financing Behavior of Portuguese SMEs in Hotel Industry”, *International Journal of Hospitality Management*, 43, 98-107.

##### i.2) Articles published in ISI journals (not indexed in CEFAGE ranking)

Forthcoming:

**Serrasqueiro, Z., A. Caetano**, “Trade-off versus pecking order theory: capital structure decisions in a peripheral region of Portugal”, *Journal of Business Economics and Management*, forthcoming.

2014

Amaral, A., M. Abreu, **V.M. Santos** (2014), "The Spatial Probit Model - An Application to the Study of Banking Crises at the End of the 90's", *Physica A*, 415, 251-260

Mendes, S., **Z. Serrasqueiro, P.M. Nunes** (2014), "Investment Determinants of Young and Old Portuguese SMEs: A Quantile Approach", *Business Research Quarterly*, 17(4), 279-291.

Quirino, E., **P.M. Nunes**, A. Fernandes de Matos (2014), "Public Investment and Economic Growth in Portuguese Sub-Regions: Empirical Evidence Using Panel Data", *Transformations in Business and Economics*, 1(31), 60-80.

### **i.3) Articles published in other peer-reviewed journals**

Forthcoming:

Mendes, S., **P.M. Nunes, Z. Serrasqueiro**, "Economic conjuncture and SME investment: empirical evidence from Portugal", *Current Politics and Economics of Europe*, forthcoming.

2014

**Nunes, P.M., Z. Serrasqueiro, J.V. Silva** (2014), "Family-Owned and Non Family-Owned SMEs: Empirical Evidence of Survival Determinants", *Economics and Business Letters*, 3(1), 68-76.

**Serrasqueiro, Z., M. Rogão, P. M. Nunes** (2014), "Capital Structure Decisions of European and U.S. Listed Firms: Is There a Unique Financial Theory?" *Research and Applications in Economics*, 2(1), 1-15.

### **ii) Articles and chapters published in scientific books**

Forthcoming:

Ramos P.A., **J.C. Novas**, M. Saraiva (2015), "Information Technologies and Management", in Dahlgaard-Park, Su Mi (eds.), *Encyclopedia of Quality and the Service Economy, The SAGE Encyclopedia of Quality and the Service Economy*, SAGE Publications, Inc, forthcoming.

Saraiva, M., **J.C. Novas**, P. Gomes, "How Communication and Control Processes Improve Quality", in M. Peris-Ortiz, J. Álvarez-García, C. Rueda-Armengot (eds.), *Achieving Competitive Advantage Through Quality Management*, Springer, forthcoming.

2014

**Novas, J.C.** (2014), "The Role of Management Accounting and Control Systems as Information Networks and as Networks of Relationships on the Development of Organizational Knowledge", in M. Khosrow-Pour (eds.), *Encyclopedia of Information Science and Technology*, 3rd. Edition, IGI-Global, pp. 934-943 (ISBN: 978-1-4666-5888-2).

**Novas, J.C., M.M. Saraiva** (2014), "An Integrated View of the Use of Quality Cost Information, the Improvement of the Quality Management System and Effects on Performance: A Study in Portuguese Companies", in M. Peris-Ortiz, J. Álvarez-García (eds.), *Action-Based Quality Management: Strategy and Tools for Continuous Improvement*, Springer, Switzerland, pp. 76-81 (ISBN: 978-3-319-06452-9).

### **iii) Scientific, pedagogical and technical books**

**Novas, J.C.,** M.M. Saraiva, A.R. Pires, A. Coelho (2014), *Custos, Qualidade e Informação – Uso da informação sobre custos da qualidade nas empresas portuguesas*, Lisboa: Associação Portuguesa para a Qualidade (ISBN: 978-972-9388-05-7).

**Vidigal, J., P. Ferreira** (2014), *Princípios de Gestão Financeira*, Rei dos Livros (ISBN: 9789898305770).

### 3.2.3. Editorial activities

#### i) Edition of scientific books

---

#### ii) Edition of journal issues

---

### 3.2.4. Thesis supervision

#### i) Ph.D. supervisions

Title: *Estudos Sobre a Solidez do Sistema Bancário da OCDE: Crises Bancárias, Endividamento e Incumprimento no Período 1991 a 2009*

Author: Cristina Pereira

Supervisor(s): **Jacinto Vidigal da Silva, Joaquim J.S. Ramalho**

Degree: Ph.D. (Management)

Institution: Universidade de Évora

Year: 2014

Title: *A Importância dos Benefícios Fiscais para as Empresas da Região do Interior*

Author: António Fernandes

Supervisor(s): **Zélia Serrasqueiro**

Degree: Ph.D. (Management)

Institution: Universidade da Beira Interior

Year: 2014

#### ii) M.Sc. supervisions

Title: *O Balanced Scorecard nas Instituições Particulares de Solidariedade Social em Portugal: Uma proposta de modelo*

Author: Duarte Rodrigues

Supervisor(s): **Jorge Casas Novas**, Francisco Pinto

Degree: M.Sc. (Management)

Institution: Universidade de Évora

Year: 2014

Title: *O Balanced Scorecard para a Administração Local: condicionantes e potencialidades para uma gestão mais eficiente – Aplicação prática a uma Divisão do Município de Vila Franca de Xira*

Author: Elsa Azevedo

Supervisor(s): **Jorge Casas Novas**

Degree: M.Sc. (Accounting and Finance)

Institution: Instituto Politécnico de Santarém – Escola Superior de Gestão e Tecnologia de Santarém

Year: 2014

Title: *A Utilização dos sistemas de contabilidade de gestão (SCG) na gestão das ONG(D)s: O caso da ONGD portuguesa OIKOS*

Author: Eduardo Reis

Supervisor(s): **Jorge Casas Novas**

Degree: M.Sc. (Accounting and Finance)

Institution: Instituto Politécnico de Santarém – Escola Superior de Gestão e Tecnologia de Santarém

Year: 2014

Title: *Sistema de custeio ABC: Desenvolvimento de uma proposta de implementação numa empresa de construção civil*

Author: José Levy

Supervisor(s): **Jorge Casas Novas**

Degree: M.Sc. (Management)

Institution: Universidade de Évora

Year: 2014

Title: *Estudo Comparativo de Efeitos de Alavancagem no Risco Sistemático Baseado no CAPM entre empresas do PSI 20 e IBEX 35*

Author: Miguel Bonito

Supervisor(s): **Elisabete Félix, Cesaltina Pires**

Degree: M.Sc. (Management)

Institution: Universidade de Évora

Year: 2014

Title: *Avaliação Financeira da Área Produtiva da Fundação Eugénio de Almeida*

Author: Martim Ramos de Sousa Cabral

Supervisor(s): **Elisabete G.S. Félix**

Degree: M.Sc. (Management)

Institution: Universidade de Évora

Year: 2014

Title: *Alterações Contabilísticas e a Reexpressão das Contas*

Author: Telmo Filipe Vilhena Matos

Supervisor(s): **Cristina Viegas, Vítor Cordeiro**

Degree: M.Sc. (Management)

Institution: Universidade do Algarve

Year: 2014

Title: *Desenho do sistema de controle gerencial: contributos para avaliação do desempenho estratégico e operacional em uma indústria calçadista.*

Author: Everton Alain de Melo

Supervisor(s): **Ricardo V. Jordão**

Degree: M.Sc. (Mestrado Profissional em Administração)



Institution: Faculdade Pedro Leopoldo, Minas Gerais, Brasil.

Year: 2014

Title: *Gestão de Resultados nos Municípios: A Contabilidade Pública como Instrumento de Transparência para a Sociedade*

Author: Jocimar Gomes

Supervisor(s): Domingos Antônio Giroletti , **Ricardo V.Jordão**

Degree: M.Sc. (Mestrado Profissional em Administração)

Institution: Faculdade Pedro Leopoldo, Minas Gerais, Brasil.

Year: 2014

### 3.2.5. Funded research projects

#### i) Projects funded by national science agencies

---

#### ii) Projects funded by international research programs

---

### 3.2.6. Presentations at conferences and seminars

#### i) Presentations at international conferences

Afonso, O., **P.M.M. Rodrigues**, **C. Viegas**, “Conditional Models in Performance Evaluation of Investment Funds in Portugal: Selectivity and Market Timing (daily vs. monthly analysis)” *Portuguese Finance Network 8th Finance Conference*, Vilamoura, Portugal, 18-20/06/2014.

**Jordão, R.V.D.**, M.S. Silva, M.C.R.L. Vasconcelos, H.G. Brasil, “Um estudo empírico sobre as inovações organizacionais e de negócios trazidas pelo sped na perspectiva de contadores e órgãos fiscalizadores”. *II simpósio internacional de inovação e sustentabilidade (II S2IS)*, São Paulo, Brasil, 09- 11/11/2014.

Marquezine, R.P., J.A. Sousa Neto, **R.V.D. Jordão**, J.L. Pinheiro, “Sustentabilidade financeira e planejamento tributário: reflexões e implicações do uso de juros sobre capital próprio como forma de remuneração de acionistas”, *II simpósio internacional de inovação e sustentabilidade (II S2IS)*, São Paulo, Brasil, 09- 11/11/2014.

**Novas, J.C.**, M.M. Saraiva, A.R. Pires, “The effects of the use of quality cost information on the improvement of the quality management system”, *1st International Conference on Quality Engineering and Management*, Universidade do Minho, Guimarães, Portugal, 14-16/09/2014.

**Novas, J.C.**, A. Coelho, A. Ramos Pires, M.M. Saraiva, “Um modelo de análise para as relações entre o uso da informação sobre custos de qualidade e o desenvolvimento do sistema de gestão da qualidade”, *VIII Congreso Iberoamericano de Contabilidad de Gestión y X Congreso Iberoamericano de Administración Empresarial y Contabilidad*, Universidad de Antioquia, Medellín, Colombia, 10-12/09/2014.

**Novas, J. C.**, **J.V. Silva**, J. Assunção, “Proposta de modelo para implementação e desenvolvimento da contabilidade analítica na Universidade de Évora”, *VIII Congreso Iberoamericano de Contabilidad de Gestión*

y X Congreso Iberoamericano de Administración Empresarial y Contabilidad, Universidad de Antioquia, Medellín, Colômbia, 10-12/09/2014.

Pereira, C., **J.J.S. Ramalho, J.V. Silva**, "The main determinants of banking crises and the fragility of regulation: evidence from OECD countries", *8<sup>th</sup> Annual Meeting of the Portuguese Economic Journal*, University of Minho, Portugal, 04-05/07/2014.

Pereira, C., **J.J.S. Ramalho, J.V. Silva**, "The main determinants of banking crises and the fragility of regulation: evidence from OECD countries", *8<sup>th</sup> Portuguese Finance Network Conference*, University of Algarve, Portugal, 19-20/06/2014.

Ramos Pires, A., **J.C. Novas**, M.M. Saraiva, "How the extensive use of quality cost information favors the improvement of the quality management system", *17<sup>th</sup> QMOD Conference – Quality Management and Organizational Development*, Prague, Czech Republic, 14-16/08/2014.

Reis, E., **J.C. Novas**, "Os sistemas de contabilidade e controlo de gestão e a formação do capital financeiro e do capital social nas organizações sem fins lucrativos: o caso da OIKOS", *VIII Congreso Iberoamericano de Contabilidad de Gestión y X Congreso Iberoamericano de Administración Empresarial y Contabilidad*, Universidad de Antioquia, Medellín, Colômbia, 10-12/09/2014.

Rita, R., **J.J.S. Ramalho, J.V. Silva**, "The impact of family ownership and firm size on capital structure decisions", *8<sup>th</sup> Portuguese Finance Network Conference*, University of Algarve, Portugal, 19-20/06/2014.

## ii) Presentations at iberian or portuguese-spoken conferences

**Jordão, R.V.D.**, E.A. Melo, J.A.S. Neto, "Estratégia e Desenho do Sistema de Controle Gerencial", *SEMEAD Seminários em Administração da USP*, São Paulo, Brasil, 30 -31/10/2014.

**Novas, J.C., J.V. Silva**, J. Assunção, "Implementação da Contabilidade Analítica na Universidade de Évora: algumas reflexões", *II Jornada sobre Implantación de la Contabilidad Analítica en las Universidades Españolas – Experiencias Prácticas*, Universidad de Valencia, Spain, 04/04/2014.

Saraiva, M.M., **J.C. Novas**, "O uso da informação sobre custos relacionados com a qualidade", *39.º Colóquio da Qualidade*, Fórum Tecnológico, Lisboa, Portugal, 13-14/11/2014.

Saraiva M.M., **J.C. Novas**, A.R. Pires, "A informação, os custos da qualidade e o sistema de gestão da qualidade – um modelo de análise", *V Encontro de Tróia – Qualidade, Investigação e Desenvolvimento*, Universidade da Beira Interior, Covilhã, Portugal, 06/06/2014.

## iii) Seminars presented at other institutions

---

## 3.3. Industrial Economics and Business Strategy

### 3.3.1. Team members



**Carlos Joaquim Farias Cândido**

UNIVERSIDADE DO ALGARVE

Ph.D. (Management), Sheffield Hallam University, 2001

M.Sc. (Management), ISCTE, 1996

B.A. (Management), Universidade do Algarve, 1992

Research interests: *Strategy formulation and implementation; Quality management; Quality and certification; TQM and ISO 9000 implementation.*



**Cesaltina Maria Pacheco Pires**

UNIVERSIDADE DE ÉVORA

Ph.D. (Economics), M.I.T., 1994

M.B.A., INSEAD, 1989

B.A. (Economics), U. Nova, 1985

Research interests: *Industrial Organization; Decision Theory; Game Theory.*



**Duarte Brito**

UNIVERSIDADE NOVA DE LISBOA

Ph.D. (Economics), U. Nova de Lisboa, 2001

B.A. (Economics), U. Nova de Lisboa, 1993

Research interests: *Industrial Organization.*



**João Miguel Bastos Vareda**

AUTORIDADE DA CONCORRÊNCIA

Ph.D. (Economics), U. Nova de Lisboa, 2008

B.A. (Economics), U. Nova de Lisboa, 2002

Research interests: *Microeconomics; Industrial Economics; Regulation Economics and Competition Policy; Telecommunications Economics; Energy Economics.*



**Luís António Fonseca Mendes**

UNIVERSIDADE DA BEIRA INTERIOR

Ph.D.(Management), U. Beira Interior, 2005

M.Sc. (Management), U. Beira Interior, 1996

B.A. (Management), U. Beira Interior, 1991

Research interests: *Flexibility in Manufacturing Systems; Organizational Learning and Quality Improvement..*



**Luísa Margarida Cagica Carvalho**

UNIVERSIDADE ABERTA

Ph.D. (Management), U. Évora, 2008

M.Sc. (Social Economics and Policy), ISEG/UTL, 1998

B.A. (Economics), U. Lusíada de Lisboa, 1994

Research interests: *Entrepreneurship; Innovation; Service Sector.*



**Markos Tselekounis**

UNIVERSIDADE NOVA DE LISBOA

Ph.D. (Economics and Regulation of Telecommunications), University of Athens, 2013

M.Sc. (Economics and Management of Telecommunication Networks), University of Athens, 2008

B.A. (Economics), University of Piraeus, 2006

Research interests: *Industrial Organization; Regulation in Network Industries; Telecommunications Economics.*



**Maria Raquel David Pereira Ventura Lucas**

UNIVERSIDADE DE ÉVORA

Ph.D. (Business Management), U. Évora, 1995

B.A. (Zootechnic Engineering), U. Évora, 1986

Research interests: *Agri-Food Marketing; Agri-Food Quality; Consumer Behaviour.*



**Pedro Pereira**

AUTORIDADE DA CONCORRÊNCIA

Ph.D. (Economics), U. California, 1997

M.Sc. (Economics), U. California, 1995

B.A. (Economics), U. Nova de Lisboa, 1988

Research interests: *Industrial Organization; Information and Uncertainty; Consumer Search.*



**Rui Filipe Cerqueira Quaresma**

UNIVERSIDADE DE ÉVORA

Ph.D. (Management), U. Sevilla, 2005

M.Sc. (Industrial Management and Strategy), ISEG/UTL, 1997

B.A. (Business Management), U. Évora, 1993

Research interests: *Information Systems; Internet; E-Government and E-Business.*



**Soumodip Sarkar**

UNIVERSIDADE DE ÉVORA

Ph.D. (Economics), U. Northeastern, 1995

M.Sc. (Economics), U. Northeastern, 1991

B.A. (Economics), U. Calcutá, 1988

Research interests: *Entrepreneurship; Innovation; International Management.*



**Victor Manuel Ferreira Moutinho**

UNIVERSIDADE DE AVEIRO

Ph.D. Student

M.Sc. (Finance), U. Portucalense, 2000

B.A. (Economics), U. Porto, 1993

Research interests: *Industrial Economics; Energy Policy; Energy Economics; Ecological Economics; Applied Econometrics.*



**Vanessa de Sousa Duarte**

Ph.D. Student

M.Sc. (Mediterranean Agriculture), U. Évora, 2009

B.A. (Agricultural Engineering), UTL, 2002

Research interests: *Economics of the Household; Innovation; Firm Objectives, Organization, and Behavior; Technological Change; Research and Development.*

### 3.3.2. Publications

#### i) Articles published in scientific peer-review journals

##### i.1) Articles published in selected journals (indexed in CEFAGE ranking)

Forthcoming:

Andrade, J., **L. Mendes**, L. Lourenço, “Perceived psychological empowerment and TQM-based Quality management systems: an exploratory research”, *Total Quality Management & Business Excellence*, forthcoming.

**Brito, D.**, H. Vasconcelos, “Inter-firm bundling and vertical product differentiation”, *Scandinavian Journal of Economics*, forthcoming.

**Brito, D.**, R. Ribeiro, H. Vasconcelos, “Measuring unilateral effects in partial horizontal acquisitions”, *International Journal of Industrial Organization*, forthcoming.

**Brito, D.**, **P. Pereira**, **J. Vareda**, “Can More Information About Rivals’ Costs Decrease Welfare?”, *The Manchester School*, forthcoming.

**Félix, E.G.S.**, **C.P. Pires**, M.A. Gulamhussen, “The exit decision in the european venture capital market”, *Quantitative Finance*, forthcoming.

[dx.doi.org/10.1080/14697688.2012.714903](https://doi.org/10.1080/14697688.2012.714903)

García-Gallego, A., N. Georgantzís, A. Jaramillo-Gutiérrez, **P. Pereira**, J.C. Pernías-Cerrillo, “On the evolution of monopoly pricing in internet-assisted search markets”, *Journal of Business Research*, forthcoming.

[dx.doi.org/10.1016/j.jbusres.2013.11.047](https://doi.org/10.1016/j.jbusres.2013.11.047)

**Mendes, L.**, L. Lourenço, “Factors that hinder quality improvement programs’ implementation in SME: definition of a taxonomy”, *Journal of Small Business and Enterprise Development*, forthcoming.

**Mendes, L.**, J. Machado, “Employees’ skills, manufacturing flexibility and performance: A structural equation modelling applied to the automotive industry”, *International Journal of Production Research*, forthcoming.

[dx.doi.org/10.10180/00207543.2014.993772](https://doi.org/10.10180/00207543.2014.993772)

Nunes, J.C., **E.G.S. Félix**, **C.P. Pires**, “Which criteria matter most in the evaluation of venture capital investments?”, *Journal of Small Business and Enterprise Development*, forthcoming.

2014

**Brito, D.**, D. Magueta (2014), “Horizontal mergers, entry and international trade”, *Review of International Economics*, 22(5), 923-943.

[dx.doi.org/10.1111/roie.12140](https://doi.org/10.1111/roie.12140)

**Brito, D.**, H. Vasconcelos (2014), “Bundled discounts: Strategic substitutes or complements?”, *Economics Letters*, 124, 278-282.

[dx.doi.org/10.1016/j.econlet.2014.05.031](https://doi.org/10.1016/j.econlet.2014.05.031)

**Brito, D.,** R. Ribeiro, H. Vasconcelos (2014), "Measuring unilateral effects in partial horizontal acquisitions", *International Journal of Industrial Organization*, 33, 22-36.

([dx.doi.org/10.1016/j.ijindorg.2013.12.003](https://doi.org/10.1016/j.ijindorg.2013.12.003))

**Brito, D.,** L. Cabral, H. Vasconcelos (2014), "Divesting ownership in a rival", *International Journal of Industrial Organization*, 34, 9-24.

([dx.doi.org/10.1016/j.ijindorg.2014.02.007](https://doi.org/10.1016/j.ijindorg.2014.02.007))

**Carvalho, L.M.,** B. Williams (2014), "Let the cork fly: creativity and innovation in a family business" *International Journal of Entrepreneurship and Innovation*, 15(2), 127-134.

**Félix, E.G.S., C.P. Pires,** M.A. Gulamhussen (2014), "The exit decision in the european venture capital market", *Quantitative Finance*, 14(6), 1115-1130

([dx.doi.org/10.1080/14697688.2012.714903](https://doi.org/10.1080/14697688.2012.714903))

García-Gallego, A., N. Georgantzís, A. Jaramillo-Gutiérrez, **P. Pereira,** J.C. Pernías-Cerrillo (2014) "On the evolution of monopoly pricing in internet-assisted search markets", *Journal of Business Research*, 67(5), 795–801.

([dx.doi.org/10.1016/j.jbusres.2013.11.047](https://doi.org/10.1016/j.jbusres.2013.11.047))

**Mendes, L.,** L. Lourenço (2014), "Factors that hinder quality improvement programs' implementation in SME: definition of a taxonomy", *Journal of Small Business and Enterprise Development*, 21( 4), 690-715.

([dx.doi.org/10.1108/JSBED-03-2014-0054](https://doi.org/10.1108/JSBED-03-2014-0054))

**Moutinho, V.,** A. Carrizo Moreira, J. Mota (2014), "Do regulatory mechanisms promote competition and mitigate market power? Evidence from Spanish electricity market", *Energy Policy*, 68, 403-412.

([dx.doi.org/10.1016/j.enpol.2014.01.021](https://doi.org/10.1016/j.enpol.2014.01.021))

**Tselekounis, M.,** D. Varouta, D. Martakos (2014), "A CDS approach to induce facilities-based competition over NGA networks", *Telecommunications Policy*, 38(3), 311-331.

## i.2) Articles published in ISI journals (not indexed in CEFAE ranking)

Forthcoming:

**Cândido, C.J.F., S.P. Santos,** "Strategy implementation: What is the failure rate?", *Journal of Management & Organization*, forthcoming.

2014

**Carvalho, L.M.** (2014) "Internationalization of service-oriented companies: Case study research into a hospitality group" *Tourism & Management Studies*, 10, 156-160.

**Mendes, L.** (2014), "Senior managers and SMEs' propensity to quality improvement programs: A comparative analysis", *E+M Ekonomie a Management*, 4, 89-103.

**Moutinho, V.,** M. Robaina-Alves, J. Mota (2014), "Carbon Dioxide Emissions Intensity of Portuguese Manufacturing Industry: A Convergence analysis and a Econometric approach", *Renewable & Sustainable Energy Reviews*, 40, 438-449.

([dx.doi.org/10.1016/j.rser.2014.07.169](https://doi.org/10.1016/j.rser.2014.07.169))

Robaina-Alves, M., **V. Moutinho** (2014), "Decomposition of energy-related GHG emissions in agriculture over 1995-2008 for European Countries", *Applied Energy*, 114, 949-957.

([dx.doi.org/10.1016/j.apenergy.2013.06.059](https://doi.org/10.1016/j.apenergy.2013.06.059))

### i.3) Articles published in other peer-reviewed journals

#### Forthcoming:

Carvalho, N., **L.M. Carvalho**, S. Nunes, "A methodology to measure innovation in European Union through the National Innovation System" *International Journal of Innovation and Regional Development (IJIRD)*, forthcoming.

**Carvalho, L.M.**, T. Costa, P. Mares, "A Success story in a partnership programme for entrepreneurship education: Outlook of students perceptions towards entrepreneurship" *International Journal of Management in Education*, forthcoming.

Moreira, C.A., P. Silva, **V. Moutinho**, "Marcas de serviços multiple paly", *Revista Portuguesa e Brasileira de Gestão*, forthcoming

**Moutinho, V.**, C.A. Moreira, J. Mota, "On the economic effects of public infrastructure investment: a survey of the international evidence", *International Journal of Energy Economics and Policy*, forthcoming.

#### 2014

Bettencourt, E. M. V., M. Tilman, V. Narciso, M.L.S. Carvalho, **P.D. Henriques** (2014), "The role of livestock functions in the well being and development of Timor-Leste rural communities", *Livestock Research for Rural Development*, 26(4), article #69.

**Carvalho, L.M.**, **S. Sarkar** (2014), "Market structures, strategy and innovation in the tourism sector" *International Journal of Culture, Tourism and Hospitality*, 8(2), 153-172.

**Carvalho, L.M.**, M.J. Lima (2014), "Redes Colaborativas e Cadeia de Abastecimento: Uma Análise Regional Aplicada ao Setor Vitivinícola", *Revista de Estudos Sociais*, 16(31), 25-42.

**Carvalho, L.M.**, T. Costa (2014), "Small and Medium Enterprises (SME) and competitiveness: An empirical study", *Management Studies*, 2(2), 88-95.

Mano, A., R. Costa, **Moutinho, V.** (2014), " O estado actual e perspectivas futuras de investigação da imagem de destinos turísticos: O caso de Portugal", *Journal of Tourism and Development*, 21/22(2), 391-402.

**Mendes, L.**, M.J. Fradique (2014), "Influence of leadership on quality nursing care", *International Journal of Health Care Quality Assurance*, 27(5), 439-450.

Sitorius, L. T., **P.D. Henriques, M. R.Lucas** (2014), "Estudo das preferências dos consumidores de tomate e beringela em Díli, Timor-Leste", *Revista Veritas*, 3, 53-75.

Xavier, J. M., **V. Moutinho** (2014), "Avaliação de desempenho com a técnica de DEA e Índice de Malmquist na Hotelaria: O caso do Grupo Pestana", *Journal of Tourism and Development*, 21/22(4), 239-250.



## ii) Articles and chapters published in scientific books

Forthcoming:

**Carvalho, L.M.**, "Challenges and opportunities for virtual universities in XXI century", in P. Ordóñez (eds.), *Assessing the Role of Mobile Technologies and Distance Learning in Higher Education*, IGI Global, forthcoming.

**Carvalho, L.M.**, P. Martins, "Entrepreneurship and innovation in ICT companies. A picture of ICT sector applied to a small European economy", in P. Ordóñez (eds.), *International Business Strategy and Entrepreneurship: An Information Technology Perspective*, IGI Global (ISBN: 9781466647534), forthcoming.

**Carvalho, L.M.**, "Entrepreneurship in small-scale farms: From production to commercialization" in G. Popescu, A.J. Vasile (eds.), *Agricultural Management Strategies in a Changing Economy*, IGI Global, forthcoming.

**Carvalho, L.M.**, "Eco innovation and eco efficiency: Assessment and managerial considerations" in E. Ariwa (eds.), *Green Technology Applications for Enterprise and Academic Innovation*, IGI Global, forthcoming.

2014

Assad, E.D., A.M. Buainain, H.S. Pinto, M.R. Sousa, **V. Duarte** (2014), "Climate change, sustainable development & international security: challenges for Brazil", in D. Vajpeyi (eds.), *Climate Change, Sustainable Development & Human Security*, Pub. Lexington, Rowman & Littlefield, pp. 169-200 (ISBN: 0739181467).

**Carvalho, L.M.**, P. Martins (2014), "Entrepreneurship and innovation in ICT companies. A picture of ICT sector applied to a small European economy", in P. Ordóñez (eds.), *International Business Strategy and Entrepreneurship: An Information Technology Perspective*, IGI Global, pp.260-275 (ISBN: 10-4018/978 1-4666-4753-4.ch017)

Costa, T., **L.M. Carvalho** (2014), "Portuguese Social Stock Exchange – Assessment of Sustainability" in B. Galbraith, F. Molinari (eds.), *Social Innovation and Entrepreneurship: Case Studies, Practices and Perspectives*, Academic-Bookshop, pp.128-148 (ISBN:978-1-910309-58-2).

**Henriques, P.D.**, M.L.S. Carvalho, V. Narciso, C. C. de Deus, **M.R. Lucas** (2014), "Agricultura Familiar em Timor Leste: da Colonização Portuguesa à Instauração da Independência", in V. Paulino (eds.), *Timor-Leste nos estudos interdisciplinares*, Unidade de Produção e Disseminação do Conhecimento do PPGP-UNTL, Díli, pp.181-193 (ISBN: 978-989-98981-0-3).

**Lucas, M.R.**, I. Ramos, **M.C. Rego**, M. C. Freire, M.S. Baltazar (2014), "National Stories Scenario: Área Portugal" in J. Briz, M. Köhler, I. Felipe (eds.), *Green Cities in the World: Progression, Inovation, Organization*, Cimapress, pp. 344-346, (ISBN: 978-84-92928-30-9).

## iii) Scientific, pedagogical and technical books

Forthcoming:

**Carvalho, L.M.**, T. Costa, *Empreendedorismo: Uma visão global e integradora*, Edições Sílabo, forthcoming.

**Carvalho, L.M.** (2014), *Microeconomia e Macroeconomia: Conceitos económicos fundamentais para a gestão das organizações*, Edições Sílabo, 2ª edição revista e melhorada (ISBN 978-972-618-773-8).

**Carvalho, L.M.**, M.R. Bernardo, I. Sousa, M. Negas (2014), *Gestão das Organizações: Uma abordagem Integrada e Prospetiva*, Edições Sílabo (ISBN 978-972-618-769-1).

### 3.3.3. Editorial activities

#### i) Edition of scientific books

Forthcoming:

**Carvalho, L.M.** (ed.), *Handbook of Research on Entrepreneurial Success and its Impact on Regional Development*, IGI Global, USA, forthcoming.

**Carvalho, L.M.** (ed), *Internationalization of Entrepreneurial Innovation in the Global Economy*, IGI Global, USA , forthcoming.

**Carvalho L.M.**, R. Baleiras, T. Dentinho, P. Dominginhos (eds), *Empreendedorismo e Desenvolvimento Regional*, Edições Sílabo forthcoming.

#### ii) Edition of journal issues

---

### 3.3.4. Thesis supervision

#### i) Ph.D. supervisions

Title: *An Integrated Analysis of Corporate Entrepreneurship and Organizational Behaviour in the Service Sector*

Author: Maria Lurdes Santana Calisto

Supervisor(s): **Soumodip Sarkar**

Degree: Ph.D. (Management)

Institution: Universidade de Évora

Year: 2014

#### ii) M.Sc. supervisions

Title: *Influence of Total Quality-Based Human Issues On Organizational Commitment*

Author: Jorge Jesus

Supervisor(s): **Luís Mendes**

Degree: M.Sc. (Management)

Institution: Universidade da Beira Interior

Year: 2014

Title: *Fidelização nos Hospitais Privados na Região do Algarve – A perspetiva dos Clientes*

Author: Fábio M.R.R. Gonçalves

Supervisor(s): **Carlos J.F. Cândido**, Isabel Feliciano

Degree: M.Sc. (Health Care Services Management)

Institution: Universidade do Algarve

Year: 2014

Title: *A implementação do Balanced Scorecard nas Instituições de Ensino Superior em Portugal – Análise da sua Importância para a Melhoria do Desempenho Organizacional e das Dificuldades de Implementação*

Author: Elsa M.G.P. Mendonça

Supervisor(s): **Carlos J.F. Cândido**, **Sergio Santos**

Degree: M.Sc. (Business Management)

Institution: Universidade do Algarve

Year: 2014

Title: *Estudo Comparativo de Efeitos de Alavancagem no Risco Sistemático Baseado no CAPM entre empresas do PSI 20 e IBEX 35*

Author: Miguel Bonito

Supervisor(s): **Elisabete Félix**, **Cesaltina Pires**

Degree: M.Sc. (Management)

Institution: Universidade de Évora

Year: 2014

Title: *Aplicação e análise do modelo CAPM condicional na bolsa de valores portuguesa*

Author: Marlene Bruno

Supervisor(s): **Cesaltina Pires**

Degree: M.Sc. (Management)

Institution: Universidade de Évora

Year: 2014

Title: *Perfis pessoais dos intra-empresendedores e a sua influência nas organizações*

Author: Inês Machado

Supervisor(s): **Luísa Carvalho**

Degree: M.Sc. (Management)

Institution: Universidade de Évora

Year: 2014

Title: *Plano de Negócios da Academia de Robótica*

Author: Bárbara Moreira

Supervisor(s): **Luísa Carvalho**, Nuno Teixeira

Degree: M.Sc. (Management)

Institution: Universidade de Évora

Year: 2014

Title: *As redes colaborativas em empresas de produtos de grande consumo não duradouros*

Author: Maria João de Sousa Pereira de Lima

Supervisor(s): **Luísa Carvalho**

Degree: M.Sc. (Management)

Institution: Instituto Politécnico de Setúbal

Year: 2014

Title: *Estratégia de Internacionalização da Red Olives*  
Author: Luzia da Aurora da Camara Ruas  
Supervisor(s): **Maria Raquel Lucas**  
Degree: M.Sc. (Oliviculture & Olive Oil)  
Institution: Universidade de Évora  
Year: 2014

Title: *Plano de Marketing da Empresa Terra Azul, Observação de Cetáceos*  
Author: Rita Maria Robalo Brás  
Supervisor(s): **Maria Raquel Lucas**  
Degree: M.Sc. (Quality Management & Agrifood Marketing)  
Institution: Universidade de Évora  
Year: 2014

Title: *Estratégia de Internacionalização da Red Olives*  
Author: Luzia da Aurora da Camara Ruas  
Supervisor(s): **Maria Raquel Lucas**  
Degree: M.Sc. (Oliviculture & Olive Oil)  
Institution: Universidade de Évora  
Year: 2014

Title: *Determinantes da Cadeia de Valor no Pão Tradicional Alentejano*  
Author: João Francisco Laranjinha Ruivo  
Supervisor(s): **Maria Raquel Lucas, Rui Fragoso**  
Degree: M.Sc. (Applied Economics and Management)  
Institution: Universidade de Évora  
Year: 2014

Title: *Plano de Negócios Monsaluz, Sociedade Agrícola Lda*  
Author: José Eduardo Lopes Rente  
Supervisor(s): **Carlos Marques, Maria Raquel Lucas**  
Degree: M.Sc. (Applied Economics and Management)  
Institution: Universidade de Évora  
Year: 2014

Title: *Fidelização de Clientes no Setor Hoteleiro: Uma Aplicação à Cidade de Évora*  
Author: Eduardo Simões Palma Murteira Martins  
Supervisor(s): **Maria Raquel Lucas, Leonor Vacas de Carvalho**  
Degree: M.Sc. (Management, Marketing specialization)  
Institution: Universidade de Évora  
Year: 2014

Title: *Estudo das Preferências dos Consumidores de Tomate e beringela em Díli, Timor-Leste*  
Author: Lamdor Tiurmauli Sitorus  
Supervisor(s): **Maria Raquel Lucas, Pedro Damião Henriques**  
Degree: M.Sc. (Applied Economics and Management, Agribusiness specialization)  
Institution: Universidade Nacional de Timor Lorosa'e  
Year: 2014

Title: *Impacto da Cooperação Angola-China na Construção de Infraestruturas e no Desenvolvimento Social e Económico*

Author: Ana Mititi Manuel Pascoal

Supervisor(s): **Maria Raquel Lucas**

Degree: M.Sc. (Relações Internacionais e Estudos Europeus)

Institution: Universidade Évora

Year: 2014

Title: *Decision –Making process in portuguese erasmus students mobility : Case study*

Author: João Pedro dos Santos Silva

Supervisor(s): **Victor Moutinho**

Degree: M.Sc. (Management)

Institution: Universidade de Aveiro

Year: 2014

Title: *A imagem percebida e projetada de Portugal como destino turístico*

Author: Ana Isabel Mano da Silva Gomes

Supervisor(s): **Victor Moutinho**

Degree: M.Sc. (Management)

Institution: Universidade de Aveiro

Year: 2014

### 3.3.5. Funded research projects

#### i) Projects funded by national science agencies

---

#### ii) Projects funded by international research programs

Title: *FoodMed - My Food - My Medicine*

CEFAGE-UE researchers: **Maria Raquel Lucas, Rui Fragoso**, Cristina Marreiros

Partner institutions: Agricultural University of Plovdiv (Bulgaria), Universidad Politécnica de Madrid (Spain), Training 2000 (Italy), European Centre of Education and Development (Bulgaria), ALPHA LTD (Greece), Brithis Hellenic College (Greece).

Funding: 107 112€ -European Union, Education and Culture DG - Lifelong Learning Programme

Period: 01/11/2013 - 31/10/2015

### 3.3.6. Presentations at conferences and seminars

#### i) Presentations at international conferences

Alves, C., **V. Mendes**, P. Pereira da Silva, “Do Stress Tests Matter? A Study on the Impact of the Disclosure of Stress Test Results on European Financial Stocks and CDS Markets”, *Portuguese Finance Network 2014*, Vilamoura, Portugal, 18-20/06/2014.

Amaral, A., M. Abreu, **V. Mendes**, “The Spatial Probit Model - An Application to the Study of Banking Crises at the End of the 90's”, *International Conference on Economic Modeling – EcoMod2014*, Bali, Indonesia, 16-18/07/2014.

Abreu, M., **V. Mendes**, "The Investor in Structured Products: Market Driven or Gambling Oriented?", *International Conference on Economic Modeling – EcoMod2014*, Bali, Indonesia, 16-18/07/2014.

**Brito, D., P. Pereira, J. Vareda**, "On the incentives of an integrated ISP to favor its own content", *ITS Biennial conference*, Rio de Janeiro, Brasil, 29/11- 03/12/2014.

**Brito, D., P. Pereira, J. Vareda**, "Can more information about rivals' costs decrease welfare?", *European Association for Research in Industrial Economics (EARIE) conference*, Milan, Italy, 29-31/08/2014.

**Brito, D., R. Ribeiro, H. Vasconcelos**, "Quantifying The Coordinated Effects Of Partial Horizontal Acquisitions", *41st European Association for Research in Industrial Economics (EARIE) Annual Conference*, Milan, Italy, 29 – 31/08/2014.

**Cândido, C.J.F., L.M.S. Coelho, R.M.T. Peixinho**, "ISO 9001 Certificate Withdrawal", *ICQEM 2014 - 1<sup>st</sup> International Conference on Quality Engineering and Management*, Universidade do Minho, Guimarães, Portugal, 15-16/09/2014.

**Carvalho, L.M.**, "From winery to rural tourism experience: A perfect married couple" *IX Congresso Internacional sobre Turismo Rural e Desenvolvimento Sustentável (CITURDES)*, São Paulo, Brasil, 9-10/09/2014.

**Carvalho, L.M., T. Costa**, "Planeamento Estratégico: Um caso aplicado ao turismo rural" *IX Congresso Internacional sobre Turismo Rural e Desenvolvimento Sustentável (CITURDES)* São Paulo, Brasil, 9-10/09/2014.

**Carvalho, L.M.**, "Exploring internationalization and innovation scenario of a Portuguese hospitality group" *5th International Conference, Advances in Tourism Economics*, Lisbon, Portugal, 15-16/05/2014.

Macieira, J., **P. Pereira, J. Vareda**, "Bundling Incentives in Markets with Product Complementarities: The Case of Triple-Play", *Competition and Regulation European Summer School (CRESSE) conference*, Corfu, Greece, 4-6/07/2014.

Macieira, J., **P. Pereira, J. Vareda**, "Bundling Incentives in Markets with Product Complementarities: The Case of Triple-Play", *ITS Biennial conference*, Rio de Janeiro, Brazil, 29/11-03/12/2014.

Macieira, J., **P. Pereira, J. Vareda**, "Bundling Incentives in Markets with Product Complementarities: The Case of Triple-Play", *European Association for Research in Industrial Economics (EARIE) conference*, Milan, Italy, 29-31/08/2014.

Macieira, J., **P. Pereira, J. Vareda**, "Bundling Incentives in Markets with Product Complementarities: The Case of Triple-Play", *12th International Industrial Organization conference*, Chicago, USA, 11-13/04/2014.

Hernández-Linares, R., **S. Sarkar**, M.J. Cobo, "The Definition of family business through the sieve. A Bibliometric Analysis of its evolution", *IFERA*, Finland, 24-27/06/2014

Hernández-Linares, R., **S. Sarkar**, M.C. López-Fernández, "The family business definition under the microscope - what is its essence?", *10th workshop on Family Firm Management Research*, Bergamo Italy 23-24/05/2014.

**Sarkar, S.**, R. Hernández-Linares, M.J. Cobo, "Winnowing Wheat from the Chaff: The Evolution of the Family Business Concept", *74th Annual Meeting of the Academy of Management*, Philadelphia, Pennsylvania, USA, 01- 05/08/2014

## ii) Presentations at iberian or portuguese-spoken conferences

**Carvalho, L.M.**, S. Galina, A. Backx, "Business Services and Business Incubators. A theoretic approach" *21º Worskhop APDR, Estratégias, Infraestruturas e Redes Empreendedoras para o Desenvolvimento Regional*, Oeiras, 27/11/2014.

**Carvalho, L.**, P. Veríssimo, "Do Empreendedorismo à Responsabilidade Social Corporativa, Uma abordagem conceptual", *Seminário Empreendedorismo e Inovação – Empresas locais, negócios globais*, Oeiras, Portugal, 09/05/2014.

**Carvalho, L.M.**, "Female entrepreneurship in a family business", *20th Workshop APDR on Familiy and Regional Development*, Fátima, Portugal ,28/04/2015.

**Carvalho, L.M.**, M.J. Lima, "Redes colaborativas e cadeia de abastecimento: Uma análise aplicada ao setor vitivinícola" *20th Workshop APDR on Familiy and Regional Development*, Fátima, Portugal ,28/04/2014.

**Carvalho, L.M.**, T. Costa, P. Mares, "Partnership for entrepreneurship education: A success story" *Partnership for entrepreneurship education: A success story" Jornadas Luso Espanholas de Gestão Cientifica* , Leiria, Portugal, 06-08/02/2014.

Costa, T., **L.M. Carvalho**, D.G. Vasquez, S. Hernández, "Assessment of Corporate Social Responsibility: A Structural Equations Model applied to the Lisbon Metropolitan Region", *III Jornadas de Responsabilidad Social Corporativa, ASEPUC*, Badajoz, Espanha, 09-10/10/2014.

Ferreira, A., **L. Mendes**, L. Lourenço, "O efeito da certificação pela ISO 9001 no desempenho das PME", *V Encontro dos Investigadores da Qualidade*, Universidade da Beira interior, Covilhã, Portugal, 06/06/2014.

Ferreira, G., **L. Mendes**, L. Lourenço, "Dificuldades Relacionadas à Implementação e Manutenção da Gestão pela Qualidade Total em uma Rede de Franchising", *V Encontro dos Investigadores da Qualidade*, Universidade da Beira interior, Covilhã, Portugal, 06/06/2014.

Félix, M., **L. Mendes**, L. Lourenço, "NP4427:2004 – Motivações e dificuldades na implementação e benefícios ao nível da melhoria da qualidade", *V Encontro dos Investigadores da Qualidade*, Universidade da Beira interior, Covilhã, Portugal, 06/06/2014.

Fontes Neves, M., **L. Mendes**, L. Lourenço, "A Articulação da ISO 9000 com as Normas Europeias para o Ensino Superior (ESG): O Caso da Universidade da Beira Interior", *V Encontro dos Investigadores da Qualidade*, Universidade da Beira interior, Covilhã, Portugal, 06/06/2014.

**Henriques, P. D.**, M. L. S. Carvalho, V. Narciso, **M. R. Lucas**, E. V. Bettencourt, "A agricultura familiar em Timor-Leste: da colonização portuguesa à restauração da independência", *IV Encontro RuralRePort Rede de História Rural em Português -Agricultura Familiar na História: comunidades, economias e paisagens*, Palmela, Portugal, 27-28/06/2014.

Kahilana, O., **L. Mendes**, L. Lourenço, “Estudo da Investigação académica centrada na ISO 9001: Análise retrospectiva, temas centrais e tendências”, *V Encontro dos Investigadores da Qualidade*, Universidade da Beira interior, Covilhã, Portugal, 06/06/2014.

Lima, M.J., **L.M. Carvalho**, “Colaborar para competir: Novo conceito para assegurar um posicionamento mais competitivo no setor vitivinícola da Península de Setúbal”, *Workshop APDR, Estratégias, Infraestruturas e Redes Empreendedoras para o Desenvolvimento Regional*, Oeiras, Portugal, 27/11/2014.

Lopes, S., **R. Quaresma**, “Privacidade dos dados em ambientes de interoperabilidade – estudo de caso na área da saúde”, *14ª Conferência da Associação Portuguesa de Sistemas de Informação*, Instituto Politécnico de Santarém – Escola Superior de Gestão e Tecnologia, Santarém, Portugal, 03-04/10/2014.

Lopes, S., **R. Quaresma**, “Desafios à privacidade dos dados na área da saúde - a interoperabilidade no domínio da segurança”, *14ª Conferência da Associação Portuguesa de Sistemas de Informação*, Instituto Politécnico de Santarém – Escola Superior de Gestão e Tecnologia, Santarém, Portugal, 03-04/10/2014.

Lopes, S., **R. Quaresma**, “Privacidade dos dados em ambientes de interoperabilidade – estudo de caso na área da saúde”, *IV Seminário de I&DT: cooperar para inovar*, Instituto Politécnico de Portalegre, Portalegre, Portugal, 24-25/11/2014.

**Lucas, M.R., M.C. Rego**, I.J. Ramos, M.L.S. Carvalho, M.S. Baltazar, “Ensino Superior e Mobilidade de Estudantes da CPLP em Portugal: uma estratégia de internacionalização?”, *4ª Conferência FORGES*, Universidade Agostinho Neto, Luanda e Universidade Mandume Ya Ndemufayo, Lubango, Angola, 19-21/11/2014.

Mares, P. , T. Costa, **L.M. Carvalho**, “Empreendedorismo no ensino superior: Um estudo empírico” XXIV, *Jornadas Luso Espanholas de Gestão Científica*, Leiria, Portugal, 06-08/02/2014.

Pedro, E., **L. Mendes**, **L. Lourenço**, “Práticas de Gestão da Qualidade no Ensino Superior: Estudo de caso na Faculdade de Ciências da Saúde da Universidade da Beira Interior”, *V Encontro dos Investigadores da Qualidade*, Universidade da Beira interior, Covilhã, Portugal, 06/06/2014.

Quaresma, N., **L. Mendes**, **L. Lourenço**, “Aplicação do modelo EFQM ao sector da saúde”, *V Encontro dos Investigadores da Qualidade*, Universidade da Beira interior, Covilhã, Portugal, 06/06/2014.

### iii) Seminars presented at other institutions

Title: *Incubadoras de empresas e serviços de apoio à criação e internacionalização de empresas*

Speaker(s): **Luísa Carvalho**

Institution: Faculdade de Economia, Administração e Contabilidade de Ribeirão Preto, Universidade de São Paulo, Brasil

Date: 11/09/2014

Title: *Social Media y Redes Sociales en Agricultura – desarrollos*

Speaker(s): **Maria Raquel Lucas**

Institution: Universidade de Extremadura, Facultad de Estudios Empresariales y Turismo, Cáceres, Espanha

Date: 5-6/11/2014



Title: *Crescimento versus desenvolvimento económico: o território e as desigualdades*

Speaker(s): **Maria Raquel Lucas, Conceição Rego**

Institution: Universidade Metodista de Angola, Luanda, Angola

Date: 20-27/09/2014

Title: *Empreendedorismo, crescimento económico e competitividade. Lições para o mercado angolano*

Speaker(s): **Maria Raquel Lucas**

Institution: Universidade Metodista de Angola, Luanda, Angola

Date: 20-27/09/2014

Title: *Crescimento e desenvolvimento económico. Divergências, contrastes e semelhanças*

Speaker(s): **Maria Raquel Lucas**

Institution: Universidade Metodista de Angola, Luanda, Angola

Date: 20-27/09/2014

Title: *Ensino de Economia e Gestão*

Speaker(s): **Conceição Rego, Maria Raquel Lucas**

Institution: Universidade Metodista de Angola, Luanda, Angola

Date: 13-15/11/2014

## 3.4. Labour, Regional and Macroeconomics

### 3.4.1. Team members



**Antónia de Jesus Henriques Correia**

UNIVERSIDADE DO ALGARVE

Ph.D. (Economics), U. Algarve, 2000  
M.Sc. (Strategy), ISEG/UTL, 1994  
B.A. (Management), U. Algarve, 1990

Research interests: *Consumer Behaviour; Choice/Decision Models; Tourism Economics; Risk and Uncertain Behaviours; Markets and Pricing, Social Behaviour.*



**António Bento Ratão Caleiro**

UNIVERSIDADE DE ÉVORA

Ph.D. (Economics), European University Institute, 2001  
M.Sc. (Mathematics Applied to Economics and Business), ISEG/UTL, 1993  
B.A. (Economics), U. Évora, 1988

Research interests: *Electoral Cycles; Fuzzy Logic Applications to Economics; Spatial Econometrics.*



**Carlos Manuel Rodrigues Vieira**

UNIVERSIDADE DE ÉVORA

Ph.D. (Economics), U. Loughborough, 1999  
M.Sc. (Economics), ISEG/UTL, 1995  
B.A. (Economics), U. Évora, 1990

Research interests: *Monetary Economics; European Integration.*



**Elsa Cristina Neves Januário Vaz**

UNIVERSIDADE DE ÉVORA

Ph.D. (Economics), ISEG/UTL, 2009  
M.Sc. (Economia Internacional), ISEG/UTL, 1999  
B.A. (Economics), U. Évora, 1994

Research interests: *International Economics; Economic Integration; General Equilibrium Models.*



**Fernanda Antonia Josefa Llusa**

UNIVERSIDADE NOVA DE LISBOA

Ph.D. (Economics), University of California, 2003

M.Sc. (Economics), University of California, 2001

M.Sc. (Business Economics), Fundação Getúlio Vargas, 1997

B.A. (Economics), Universidade de São Paulo, 1992

Research interests: *Entrepreneurship concept and measurement; Female entrepreneurship; Economic growth, geography and institutions.*



**Gertrudes das Dores Lopes Saúde Guerreiro**

UNIVERSIDADE DE ÉVORA

Ph.D. (Economics), U.Évora, 2010

M.Sc. (Statistics and Information Management), ISEG/UTL, 1997

B.A. (Economics), U. Évora, 1993

Research interests: *Regional Economics; Household Economics; Income Distribution*



**Isabel Maria Pereira Viegas Vieira**

UNIVERSIDADE DE ÉVORA

Ph.D. (Economics), U. Loughborough., 1999

M.Sc. (Economics), ISEG/UTL, 1995

B.A. (Economics), U. Évora, 1990

Research interests: *Financial Integration; International Finance*



**João Manuel Rodrigues Pereira**

UNIVERSIDADE DE ÉVORA

Ph.D. (Economics), U. Évora, 2003

M.Sc. (Monetary and Financial Economics), ISEG/UTL, 1997

B.A. (Economics), U. Évora, 1993

Research interests: *Labour Economics; Macroeconomics; Monetary Economics.*

**Joaquim Amaro Graça Pires Faia e Pina Catalão Lopes**

UNIVERSIDADE NOVA DE LISBOA



Ph.D. (Economics), Universitat Pompeu Fabra, 2001  
M.Sc. (Economics), Universitat Pompeu Fabra, 1996  
M.Sc. (Economics), Universidade Nova de Lisboa, 1996  
B.A. (Economics), Universidade Nova de Lisboa, 1989

Research interests: *Quantitative and applied macroeconomics; Quantitative financial and business economics.*

**Jorge Miguel Lopo Gonçalves Andraz**

UNIVERSIDADE DO ALGARVE



Ph.D. (Economics), U. Algarve, 2001  
M.Sc. (Management and Economic Sciences), U. Algarve, 1996  
B.A. (Economics), U. Católica Portuguesa, 1988

Research interests: *Economic Growth; Macroeconometrics; Public Policies.*

**José Manuel Madeira Belbute**

UNIVERSIDADE DE ÉVORA



Ph.D. (Economics), U. Évora, 1996  
M.Sc. (Economics), ISEG/UTL, 1991  
B.A. (Economics), U. Évora, 1985

Research interests: *Macroeconomics; Economic Growth and Sustainability; Economic Education.*

**Luiz Tadeu Milheiro de Menezes Pinto Machado**

ESCOLA DE HOTELARIA E TURISMO DA MADEIRA



Ph.D. (Economics), UTL/ISEG, 2013  
M.Sc. (Strategic Management and Tourism Development), U. Madeira, 1998  
B.A. (Tourism Management), Instituto de Novas Profissões, 1992

Research interests: *Tourism/Transport Economics; Destination Image; Loyalty Guests; Productivity and Efficiency Modeling; Innovation and Technology.*



**Maria Aurora Murcho Galego**

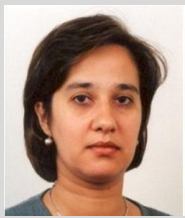
UNIVERSIDADE DE ÉVORA

Ph.D. (Economics), U. Bristol, 1998

M.Sc. (Mathematics Applied to Economics and Business), ISEG/UTL, 1992

B.A. (Economics), U. Évora, 1988

Research interests: *Applied Econometrics; Labour Economics; International Trade and Foreign Direct Investment.*



**Maria Conceição Peixe Rego**

UNIVERSIDADE DE ÉVORA

Ph.D. (Economics), U. Évora, 2003

M.Sc. (Applied Economics), U. Nova de Lisboa, 1997

B.A. (Economics), U. Évora, 1991

Research interests: *Regional and Urban Economic Development.*



**Nuno Carlos Leitão**

INSTITUTO POLITÉCNICO DE SANTARÉM

Ph.D. (Economics), U. Lusíada de Lisboa, 2008

M.Sc. (International Economics), ISEG/UTL, 2002

B.A. (International Relations), U. Minho, 1995

Research interests: *Intra- Industry Trade; Foreign Direct Investment; Migrations; Dynamic Panel Data Model.*



**Teresa Eugénia de Bourbon Bobone Galhardo Simões de Vasconcelos e Sousa**

UNIVERSIDADE LUSÓFONA

Ph.D. (Economics), U. Nova de Lisboa, 2010

B.A. (Economics), U. Coimbra, 1991

Research interests: *Regional and Urban Economic Development.*



**Tiago Miguel Guterres Neves Sequeira**

UNIVERSIDADE DA BEIRA INTERIOR

Ph.D. (Economics), U. Nova Lisboa, 2004

B.A. (Economics), U. Beira Interior, 1999

Research interests: *Economic Growth; Business Cycles.*

## 3.4.2. Publications

### i) Articles published in scientific peer-review journals

#### i.1) Articles published in selected journals (indexed in CEFAGE ranking)

Forthcoming:

**Correia, A.**, A. Zins, “Why do tourists persist in visiting the same destination?”, *Tourism Economics*, forthcoming.

**Correia, A.**, M. Kozak; H. Reis, “Conspicuous consumption of the elite: Social and self-congruity in tourism choices”, *Journal of Travel Research*, forthcoming.

([dx.doi.org/10.1177/0047287514563337](https://doi.org/10.1177/0047287514563337))

**Llussá, F.**, J.M. Lopes, “Regional growth in Europe: the role of European and national policies”, *Journal of Policy Modeling*, forthcoming.

**Pereira, J., A. Galego**, “Intra-regional wage inequality in Portugal”, *Spatial Economic Analysis*, forthcoming.

Pereira, A.M., **J. Andraz** (2015), “On the Long-Term Macroeconomic Effects of Social Spending in the United States”, *Applied Economic Letters*, 22(2), 132-136.

([dx.doi.org/10.1080/13504851.2014.929620](https://doi.org/10.1080/13504851.2014.929620))

**Sequeira, T.N.**, A. Ferreira-Lopes, O. Gomes, “A growth model with qualities, varieties and human capital: stability and transitional dynamics”, *Studies in Nonlinear Dynamics and Econometrics*, forthcoming.

([dx.doi.org/10.1515/snde-2013-0018](https://doi.org/10.1515/snde-2013-0018))

2014

**Galego, A., J. Pereira** (2014), “Decomposition of Regional Wage Differences Along the Wage Distribution in Portugal: the Importance of Covariates”, *Environment and Planning A*, 46(10), 2514 – 2532.

([dx.doi.org/10.1068/a130055p](https://doi.org/10.1068/a130055p))

Gómez, M.A., **T.N. Sequeira** (2014), “Should the US increase subsidies to R&D? Lessons from an endogenous growth theory”, *Oxford Economic Papers*, 66(1), 254-282.

([dx.doi.org/10.1093/oepp/gpt007](https://doi.org/10.1093/oepp/gpt007))

Gómez, M.A., **T.N. Sequeira** (2014), “Should the US streamline its tax system: an analysis on an endogenous growth model”, *Economic Modelling*, 37, 113-119.

([dx.doi.org/10.1016/j.econmod.2013.10.033](https://doi.org/10.1016/j.econmod.2013.10.033))

Gomes, O., A. Ferreira-Lopes, **T.N. Sequeira**, (2014), “Exponential discounting bias”, *Journal of Economics*, 113 (1), 31-57.

([dx.doi.org/10.1007/s00712-013-0363-3](https://doi.org/10.1007/s00712-013-0363-3))

Pereira, A.M., **J. Belbute** (2014), “Final Energy Demand in Portugal: How Persistent it is and Why it Matters for Environmental Policy”, *International Economic Journal*, 28(4), 661-677.

([dx.doi.org/10.1080/10168737.2014.920896](https://doi.org/10.1080/10168737.2014.920896))

**Pereira, J., A. Galego**, (2014), “Inter-regional wage differentials in Portugal: an analysis across the wage distribution”, *Regional Studies*, 48(9), 1529-1546.

## i.2) Articles published in ISI journals (not indexed in CEFAGE ranking)

Forthcoming:

Almeida, A., **A. Correia**, A. Pimpão, "Segmentation by benefits sought: the case of rural tourism in Madeira", *Current Issues in Tourism*, forthcoming

([dx.doi.org/10.1080/13683500.2013.768605](https://doi.org/10.1080/13683500.2013.768605))

Dias, J., **A. Correia**, F. Lopez, "The meaning of Rental Second Homes and places: The owners' perspectives", *Tourism Geographies*, forthcoming.

Ferreira-Lopes, A., **T.N. Sequeira**, "The dynamics of the trade balance and the terms of trade in Central and Eastern Europe", *Acta Oeconomica*, forthcoming.

Santos, M., **T.N. Sequeira**, "Skills mismatch and wage inequality: evidence for different countries in Europe", *Technological and Economic Development of the Economy*, forthcoming.

2014

Almeida, A., **A. Correia**, A. Pimpão (2014), "Segmentation by benefits sought: the case of rural tourism in Madeira", *Current Issues in Tourism*, 17(9), 813-831.

([dx.doi.org/10.1080/13683500.2013.768605](https://doi.org/10.1080/13683500.2013.768605))

**Machado, L.P.**, A. Almeida (2014), "The on-going process of re-invention of classic tourism destinations - the case of Nordic tourists in Madeira Island", *Scandinavian Journal of Hospitality and Tourism*, 13(1), 24-43.

([dx.doi.org/10.1080/15022250.2014.961242](https://doi.org/10.1080/15022250.2014.961242))

Silva, F., **A. Correia**, C.M. Santos, V. Ambrósio (2014), "Competitiveness of the Azores Destination in the Scandinavian Market", *Scandinavian Journal of Tourism*, 13(1), 84-98.

([dx.doi.org/10.1080/15022250.2014.960136](https://doi.org/10.1080/15022250.2014.960136))

## i.3) Articles published in other peer-reviewed journals

Forthcoming:

Pereira, R., **A. Correia**, R. Schutz, "A Taxonomy of golf destination brand personality: insights from the golf industry", *Journal of Destination Marketing and Management*, forthcoming.

Pereira, R., **A. Correia**, R. Schultz, "Golf Destinations' Brand Personality: The Case of the Algarve", *International Journal of Culture, Tourism, and Hospitality Research*, forthcoming.

2014

Demir, S.S., M. Kozak, **A. Correia** (2014), "Modelling Consumer Behavior: An Essay with Domestic Tourists in Turkey", *Journal of Travel and Tourism Marketing*, 31(3), 303-312.

Dias, J.A., **A. Correia**, F.J.M. López (2014), "From information-sharing to vacation rental choices - the case of Albufeira, Portugal" *International Journal of Culture, Tourism and Hospitality Research*, 8(1), 35-47.

[dx.doi.org/10.1108/IJCTHR-07-2013-0049](https://doi.org/10.1108/IJCTHR-07-2013-0049)

**Leitão, N.C.** (2014), "Economic Growth, Carbon Dioxide Emissions Renewable Energy and Globalization", *International Journal of Energy Economics and Policy*, 4(3), 391-399.

Pimpão, P., **A. Correia**, A., J. Duque, C. Zorrinho (2014), "Exploring Effects of Hotel Chain Loyalty Program", *International Journal of Culture, Tourism, and Hospitality Research*, 8(4), 375-387.

[dx.doi.org/10.1108/IJCTHR-03-2014-0020](https://doi.org/10.1108/IJCTHR-03-2014-0020)

Serra, J., **A. Correia**, **P.M.M. Rodrigues** (2014), "A comparative analysis of tourism destination demand in Portugal", *Journal of Destination Marketing and Management*, 2, 221-227.

[dx.doi.org/10.1016/j.jdmm.2013.10.002](https://doi.org/10.1016/j.jdmm.2013.10.002)

Soares, J.O., **J.P. Pina** (2014), "Credit risk assessment and the information content of financial ratios: a multi-country perspective", *Wseas Transactions on Business and Economics*, 11, 175-187.

Thorpe, M., **N.C. Leitão** (2014), "Economic Growth in Australia: globalisation, trade, and foreign direct investment", *Global Business and Economic Review*, 16(1), 75-86.

[dx.doi.org/10.1504/GBER.2014.058079](https://doi.org/10.1504/GBER.2014.058079)

**Vieira, C., I. Vieira**, (2014), "What drives university applications? An attempt to explain aggregate demand for higher education", *Journal of Higher Education Policy and Management*, 36(6), 616-631.

[dx.doi.org/10.1080/1360080X.2014.957894](https://doi.org/10.1080/1360080X.2014.957894)

## ii) Articles and chapters published in scientific books

Forthcoming:

**Barros, C.P.**, Machado, L.P., "A Productivity analysis of network hotels" in S. Ivanov, M. Ivanova, V. Magnini (eds.), *Routledge Handbook of Hotel Chain Management*- Chapter 33, Routledge, forthcoming.

**Correia, A.**, M. Kozak, "Luxury Tourism" in J. Jafari (eds.), *Encyclopedia of Tourism*, Springer, forthcoming.

**Correia, A.**, "Prestige Tourism" in J. Jafari (eds.), *Encyclopedia of Tourism*, Springer, forthcoming.

Rodrigues, A., **A. Correia**, M. Kozak, A.M. Tuohino, "Lake-destination image attributes: content analysis of text and pictures" in *Advances in Marketing Places and Spaces* - Vol. 10, Emerald Publishing, forthcoming.

Serra, J., **A. Correia**, P.M.M. Rodrigues, "Yielding tourists' preferences" in *Advances in Marketing Places and Spaces* - Vol. 10, Emerald Publishing, forthcoming.

2014

**Correia A.**, M. Kozak, H. Reis (2014), "Luxury Tourists: Celebrities' Perspectives", in A.G. Woodside, M. Kozak (eds.), *Tourists' Perceptions and Assessments* - Advances in Culture, Tourism and Hospitality Research, Emerald Group Publishing Limited, pp.43-51 (ISBN: 978-1-78350-618-7).



**Guerreiro, G.** (2014), "Regional Income Convergence in Portugal (1991–2002)", in J.A. Bishop , J.G. Rodríguez (eds.), *Economic Well-Being and Inequality: Papers from the Fifth ECINEQ Meeting (Research on Economic Inequality)*, Emerald Group Publishing Limited, pp. 351-381 (ISSN: 1049-2585/doi:10.1108/S1049-258520140000022011).

**Lucas, M.R., I. Ramos, M.C. Rego, M.C. Freire, M.S. Baltazar** (2014), "National Stories Scenario: Área Portugal" in J. Briz, M. Köhler, I. Felipe (eds.), *Green Cities in the World: Progression, Inovation, Organization*, Cimapress, pp. 344-346 (ISBN: 978-84-92928-30-9).

Reis, H., **A. Correia** (2014), "Facilitators and Constraints in the Participation of Women in Golf: Portugal" in A. Woodside, M. Kozak (eds.), *Tourists' Perceptions and Assessments- Advances in Culture, Tourism and Hospitality Research*, Emerald Group Publishing Limited, pp.137-146 (ISBN: 978-1-78350-618-7).

**Rego, C.** (2014), "Alguns efeitos territoriais das instituições de ensino superior: uma abordagem a partir do caso da Universidade de Évora" in S. Saúde, C. Borralho, I. Féria, S. Lopes (eds.), *Os impactos sócio económicos do ensino superior: um retrato a partir de estudos de caso de Portugal e Espanha*, Edições Sílabo, pp. 129-144. (ISBN: 978-972-618-741-7).

**Rego, C., A. Caleiro, C. Vieira, I. Vieira, M. da Saudade Baltazar**, (2014), "Algumas Notas sobre o Contributo do Ensino Superior para a Qualificação da População do Alentejo" in B. Nico, L.P. Nico (eds.), *Educações no Alentejo*, Edições Pedagogo, Colecção Estudos Académicos em Ciências da Educação, pp. 157-166 (Depósito Legal: 375479/14).

Serra, J., **A. Correia, P. Rodrigues** (2014), "Heterogeneity in tourism motivations, the case of the Algarve" in A. Woodside, M. Kozak (eds.), *Tourists' Behaviors and Evaluations, Book series, Advances in Culture, Tourism and Hospitality Research*, Emerald Group Publishing, pp. 93-103 (ISSN- 978-1-78441-172-5).

**Vieira, C., I. Vieira, L. Raposo** (2014), "Previsores do Desempenho Académico dos Estudantes no Ensino Superior" in A. Noutel, E. Brutten, G. Pires, I. Huet, I. Ibiapina (eds.), *Ensino Superior: Saberes, Experiências e Desafios*, AFIRSE, Teresina, pp. 291-314 (ISBN: 978-85-7463-792-1).

### iii) Scientific, pedagogical and technical books

Forthcoming:

**Correia, A., M. Cesário**, *Microeconomia- Uma abordagem tutorial*, Sílabas e Desafios, forthcoming.

### 3.4.3. Editorial activities

#### i) Edition of scientific books

Forthcoming:

**Correia, A., J. Gnoth, M. Kozak, A. Fyall** (eds.), *Advances in Marketing Places and Spaces*, Vol. 10, Emerald Publishing, forthcoming.

## ii) Edition of journal issues

Forthcoming:

Editor : **Correia. A.**, A. Fyall, J. Gnoth, L. Andreu

Issue Title: From new markets to digital marketing

Journal: *Anatolia – An International Journal of Tourism and Hospitality Research*

Volume:

Year: forthcoming

2014

Editor : Fyall, A., **A. Correia**, J. Gnoth, M. Kozak, L. Andreu

Issue Title: Advances in tourism marketing

Journal: *International Journal of Culture, Tourism and Hospitality Research*

Volume: 8(4)

Year: 2014

## 3.4.4. Thesis supervision

### i) Ph.D. supervisions

Title: *Golf Destinations' Brand Personality – The case of the Algarve.*

Author: Rosária Pereira

Supervisor(s): **Antónia Correia**, Ronald Schultz

Degree: Ph.D. (Tourism)

Institution: Universidade do Algarve

Year: 2014

Title: *Heterogeneity and Dynamics in Tourists' Motivations: evidence from Algarve Tourists' Preferences*

Author: Jaime Serra

Supervisor(s): **Antónia Correia**, **Paulo Rodrigues**

Degree: Ph.D. (tourism)

Institution: Universidade do Algarve

Year: 2014

### ii) M.Sc. supervisions

Title: *Os Impactos da Actual Crise Financeira na Estrutura de Capitais das Empresas Portuguesas*

Author: Duarte Serrano

Supervisor(s): **Carlos Vieira**, **Joaquim J.S. Ramalho**

Degree: M.Sc. (Management)

Institution: Universidade de Évora

Year: 2014

Title: *A Educação e a Economia: Determinantes na Qualidade e Eficiência Educativa*

Author: Nuno Filipe Antunes Rocha

Supervisor(s): Manuela Oliveira, **Isabel Vieira**, **Carlos Vieira**

Degree: M.Sc. (Mathematics)

Institution: Universidade de Évora

Year: 2014

Title: *Crescimento Económico, Globalização e Empreendedorismo: Um Estudo Empírico*

Author: Maria do Carmo Bartolomeu

Supervisor(s): **Nuno Carlos Leitão**

Degree: M.Sc. (Management)

Institution: Universidade de Évora

Year: 2014

Title: *Regional Effects of tourism in Portugal: A multivariate analysis*

Author: Hugo Gonçalves

Supervisor(s): **Jorge Andraz**

Degree: M.Sc. (Tourism Economics and Regional Development)

Institution: Universidade do Algarve

Year: 2014

Title: *Evolução e execução do contrato-programa SNS de 2010 a 2013*

Author: Cláudia Neves

Supervisor(s): **Jorge Andraz**, Sandra Brás

Degree: M.Sc. (Health Care Services Management)

Institution: Universidade do Algarve

Year: 2014

Title: *Determinantes da estrutura de capital nas empresas cotadas na Euronext Lisboa*

Author: Liliana Fernandes

Supervisor(s): **Jorge Andraz**, Fernanda Matias

Degree: M.Sc. (Corporate Finance)

Institution: Universidade do Algarve

Year: 2014

Title: *Sistemas de Apoio à Prática de Enfermagem (SAPE): Novas Dinâmicas – a perspetiva dos enfermeiros*

Author: Gisela Bichinho Whittle Coelho

Supervisor(s): **Antónia Correia**, Joel Guerreiro

Degree: M.Sc. (Health Care Services Management)

Institution: Universidade do Algarve

Year: 2014

Title: *O Impacto Económico e Social da Infecção do Local Cirúrgico, após Artroplastia da Anca, num Hospital Público do Algarve*

Author: Ana Dora Guerreiro Veiga

Supervisor(s): **Antónia Correia**

Degree: M.Sc. (Infection in Medical Care)

Institution: Universidade Católica

Year: 2014

Title: *Metodologias de Intervenção em Áreas de Baixa Densidade - O caso do Interior Sul de Odemira*

Author: Helder Guerreiro

Supervisor(s): **M. Conceição Rego**

Degree: M.Sc. (Economics)

Institution: Universidade de Évora

Year: 2014

Title: Angola – A Cooperação com os Estados na África Austral para o Combate à Ameaça dos Movimento Imigratórios  
Author: Nelson Miranda  
Supervisor(s): **M. Conceição Rego**  
Degree: M.Sc. (European Studies and International Relations)  
Institution: Universidade de Évora  
Year: 2014

### 3.4.5. Funded research projects

#### i) Projects funded by national science agencies

Title: *Externalities, Growth and Welfare*  
CEFAGE-UE researchers: **Tiago N. Sequeira**  
Partner institutions: ---  
Contract reference: ECO2011-25490  
Funding: 11 418€ (Ministerio de Ciencia Y Innovación de Espanha)  
Period: 01/01/2012–31/12/2014

Title: *Education Mismatches and Productivity Differences*  
CEFAGE-UE researchers: **Tiago N. Sequeira** (principal investigator)  
Partner institutions: ---  
Funding: 16 560€ (FCT), ref. PTDC/EGE-ECO/112499/2009  
Period: 05/04/2011-04/04/2014

#### ii) Projects funded by international research programs

---

### 3.4.6. Presentations at conferences and seminars

#### i) Presentations at international conferences

**Belbute, J.**, “Does final demand for energy in Portugal exhibit long memory?”, *4<sup>th</sup> World Congress of Environmental and Resource Economics*, Istanbul, Turkey, 28/06-02/07/2014.

**Correia, A.**, J. Serra, **P.M.M. Rodrigues**, “Yielding tourists preferences: The case of the Algarve”, *49th TRC Meeting*, Innsbruck, 10-13/04/2014.

**Fragoso, Rui, C. Rego**, V. Bushenkov, “Clustering of territorial áreas: a multi-criteria districting problema”, *54<sup>th</sup> ERSA Congress*, Saint Petersburg, Russia, 26-29/08/2014.

**Guerreiro, G.**, A. Guerreiro, “Convergência Regional e Investimento I&D: Investigação aplicada em Portugal”, *First International Meeting of Industrial Sociology, Sociology of Organizations and Work - Work, Social Change and Economic Dynamics: Challenges for Contemporary Societies*, Lisbon, Portugal, 27-28/11/2014.

**Leitão, N. C.**, “The Determinants of Vertical Specialization Using Industry Factors”, *Business & Economics Society International, 2014 Conference*, Florence, Italy, 06-10/07/2014 .

Reis, H., **A. Correia**, L. McGinnis, "How do Portuguese women golfers cope with gender inequities?", *3rd Interdisciplinary Tourism Research Conference*, Istanbul, Turkey, 03-08/06/2014.

Sfanda, C., M. Kozak, **A. Correia**, "Experience facilitation and tourist value experience", *23rd Nordic Symposium in Tourism and Hospitality Research*, Copenhagen Business School, Frederiksberg, Dinamarca, 02-04/10/2014.

Turala, M., L. Oulasvirta, Y. Psycharis, **G. Guerreiro**, G. Peteri, P. Talberg, "Equalization of territorial units and incomes: case study of Nordic, Central European and Southern countries", *54th ERSA (European Regional Science Association) Congress*, Saint Petersburg, Russia, 26-29/08/2014.

## **ii) Presentations at iberian or portuguese-spoken conferences**

**Galego, A., J. Pereira**, "Intra-Regional Wage Inequality in Portugal", *20º congresso da APDR*, Universidade de Évora, Évora, Portugal, 10-11/07/2014.

**Guerreiro, G., A. Caleiro**, "A convergência espacial do conhecimento em Portugal", *20th APDR Congress - Renaissance of the Regions of Southern Europe*, Universidade de Évora, Évora, Portugal, 10-11/07/2014.

**Guerreiro, G., A. Caleiro**, "O processo de convergência espacial do conhecimento no Alentejo", *Aprender no Alentejo - VIII Encontro Regional de Educação*, Universidade de Évora, Évora, Portugal, 19-20/05/2014.

**Lucas, M.R., C. Rego**, I.J. Ramos, M.L.S. Carvalho, M. da Saudade Baltazar, "Ensino Superior e Mobilidade de Estudantes da CPLP em Portugal: uma estratégia de internacionalização?", *4ª Conferência FORGES*, Universidade Agostinho Neto e Universidade Mandume Ya Ndemufayo, Luanda e Lubango, Angola, 19-21/11/2014.

**Rego, C.**, "O papel do ensino superior em Portugal na promoção da equidade territorial", *VIII Congresso Português de Sociologia, 40 anos de democracia(s) – Progressos, Contradições e Prospetivas*, Universidade de Évora, Évora, Portugal, 14-16/04/2014.

**Rego, C.**, "Acesso ao ensino superior em Portugal: diferenças entre o rural e o urbano", *Encontro Aprender no Alentejo (VIII Edição)*, Universidade de Évora, Évora, Portugal, 19-20/05/2014.

**Rego, C.**, "Ensino Superior: Instrumento de Equidade Territorial?", *20º Congresso da APDR*, Universidade de Évora, Évora, Portugal, 10-11/07/2014.

**Rego, C.**, I.J. Ramos, M.M. Oliveira, **M.R. Lucas**, M.S. Baltazar, "Diferenças de desenvolvimento intra-regional em Portugal: uma abordagem multivariada", *20º Congresso da APDR*, Universidade de Évora, Évora, Portugal, 10-11/07/2014.

**Rego, C.**, "Ensino Superior e a Promoção da Equidade Territorial", *4ª Conferência FORGES*, Universidade Agostinho Neto e Universidade Mandume Ya Ndemufayo, Luanda e Lubango, Angola, 19-21/11/2014.

**Rego, C., I. Vieira, M. R. Lucas, C. Vieira**, "The promotion of entrepreneurship in low density regions: the case of the Agency for the Regional Development of Alentejo (ADRAL)", *21º Workshop da APDR – Estratégias, Infra-estruturas e Redes Empreendedoras para o Desenvolvimento Regional*, Oeiras, Portugal, 27/11/2014.

Rodrigues, A., **A. Correia**, M. Kozak, "Qualitative Analysis in Destination Image Research Lake Tourism as an Example", *3º Congresso Ibero-Americano em Investigação Qualitativa*, Universidade da Extremadura, Badajoz, Spain, 14-16/07/2014.

### iii) Seminars presented at other institutions

Title: *Crescimento versus desenvolvimento económico: o território e as desigualdades*

Speaker(s): **Maria Raquel Lucas, Conceição Rego**

Institution: Universidade Metodista de Angola, Luanda

Date: 20-27/09/2014

Title: *A geografia económica e a economia regional: papéis no crescimento e desenvolvimento económico*

Speaker(s): **Conceição Rego**

Institution: Universidade Metodista de Angola, Luanda

Date: 20-27/09/2014

Title: *Política fiscal e Política Social e Relação com a melhoria da qualidade de vida da população*

Speaker(s): **Conceição Rego**

Institution: Universidade Metodista de Angola, Luanda

Date: 20-27/09/2014

Title: *Ensino de Economia e Gestão*

Speaker(s): **Conceição Rego, Maria Raquel Lucas**

Institution: Universidade Metodista de Angola, Luanda

Date: 13-15/11/2014

## 4. ORGANIZATION OF SCIENTIFIC EVENTS

### 4.1. Conferences and Workshops

#### International Events

Title: *5th workshop on the Economics of ICTs*

CEFAGE's local organizers: Duarte Brito, Pedro Pereira, Andreia Dionísio

Date: 20-21/03/2014

Title: *8th Portuguese Finance Network Conference*

CEFAGE's local organizers: Luis Coelho (chair)

Date: 18-20/06/2014

#### National, Iberian or Portuguese-spoken Events

Title: *Doctoral Consortium*

CEFAGE's local organizers: Andreia Dionisio (chair), Luís A.G. Coelho

Date: 30/05/2014

Title: *Agricultura Familiar e Sustentabilidade dos Territórios Rurais - Seminário Regional do Alentejo*

CEFAGE's local organizers: Pedro Damião Henriques

Date: 09/07/2014

Title: *20th APDR congress - Renaissance of the Regions of Southern Europe*

CEFAGE's local organizers: M. Conceição Rego (chair)

Date: 10-11/07/2014

Title: 4<sup>th</sup> *CEFAGE-UE Workshop*

CEFAGE's local organizers: Andreia Dionisio (chair), Luís A.G. Coelho

Date: 24/10/2014

### 4.2. Courses and Technical Seminars

Title: *Detrended Cross-Correlation Analysis: Applications to Management and Economics*

Lecturer(s): Gilney Zebende (SENAI CIMATEC and UEFS- Brasil)

CEFAGE's local organizers: Andreia Dionisio (chair), Paulo Ferreira.

Date: 03/10/2014

## 4.3. Research Seminars

Speaker(s): Joana Pinho (Fac. Economia, U. Porto)

Title: *Impacts of entry on collusion sustainability in market with a general evolution of demand*

Date: 07/02/2014

Speaker(s): Vladimir Bushenkov (Universidade de Évora)

Title: *Displaying the Pareto frontier in decision problems with multiple objectives*

Date: 14/03/2014

Speaker(s): Ana Rolo (Instituto Politécnico de Setúbal)

Title: *Contributos da Qualidade para o Desempenho de Redes Cooperação entre Empresas: Aplicação à indústria automóvel através da abordagem Lean, Agile, Resilient e Green – LARG*

Date: 25/03/2014

Speaker(s): Manuel Branco (Universidade de Évora)

Title: *Que Economia para a Democracia - Economics for Substantive Democracy*

Date: 11/04/2014

Speaker(s): Adriana Backx (Universidade de São Paulo, Brasil)

Title: *Análise quantitativa dos dados sobre avaliação e aprendizagem do Projeto AVENA para a Universidade de Évora*

Date: 16/05/2014

Speaker(s): Renato Pereira (ISCTE)

Title: *Empreendedorismo e Inovação: Intersecções Epistemológicas*

Date: 23/05/2014

Speaker(s): Gabriela Pereira (ISCTE)

Title: *Economia do voluntariado e relações interpessoais*

Date: 13/06/2014

Speaker(s): Celeste Varum (Universidade de Aveiro)

Title: *A literacia económica e financeira e sua relação com o endividamento, riqueza e padrões de investimento*

Date: 20/06/2014

Speaker(s): António Caleiro (Universidade de Évora)

Title: *De novo acerca da sazonalidade nos nascimentos em Portugal*

Date: 24/06/2014

Speaker(s): Gilberto Capeça (Banco Nacional de Angola)

Title: *O Relato Financeiro Electrónico. Que Informação Procuram os Utilizadores? O Caso Angolano*

Date: 10/10/2014

Speaker(s): Vanessa de Sousa Duarte (Universidade de Évora)

Title: *Technology cycles, dominant design and firm survival in the tractor industry*

Date: 04/11/2014

Speaker(s): Gilberto Loureiro (Universidade do Minho)

Title: *Do improvements in the information environment affect real investment decisions?*

Date: 14/11/2014



Speaker(s): Miguel Rocha e Sousa (Universidade de Évora)

Title: *Optimal Bail-out and Bail-in policy mix: Lessons from the Banco Espírito Santo (BES) failure*

Date: 25/11/2014

Speaker(s): Paula Álvarez González (Universidade de Vigo)

Title: *Procesos de Fusión y Adquisición: Análisis de la influencia de la integración de marketing en el cliente*

Date: 28/11/2014

Speaker(s): César Augusto (Portway)

Title: *Investimento Socialmente Responsável: a tangibilidade financeira*

Date: 05/12/2014

Speaker(s): Paulo Ferreira (I.P. Portalegre)

Title: *Why does the Euro fail? The DCCA approach*

Date: 16/12/2014

## 5. WORKING-PAPER SERIES

**Ramalho E.A., J.J.S. Ramalho** (2014), *Convenient links for the estimation of hedonic price indexes: the case of unique, infrequently traded assets*, CEFAGE-UE Working Paper 2014/01.

**Fragoso, R., M.C. Rego, V. Bushenkov** (2014), *Clustering of territorial areas: A multi-criteria districting problem*, CEFAGE-UE Working Paper 2014/02.

**Branco, M.C.** (2014), *Economics for Substantive Democracy*, CEFAGE-UE Working Paper 2014/03.

**Serrano, F.A.** (2014), *Notional Defined Contribution Accounts: Application to Portugal*, CEFAGE-UE Working Paper 2014/04.

**Amaral, A., M. Abreu, V. Mendes** (2014), *The Spatial Probit Model – An Application to the Study of Banking Crises at the End of the 90's*, CEFAGE-UE Working Paper 2014/05.

**Coelho, L.A.G.** (2014), *Portfolio Selection Optimization under Cumulative Prospect Theory – a parameter sensibility analysis*, CEFAGE-UE Working Paper 2014/06.

**Castro, G., R.M. Félix, P. Júlio, J.R. Maria** (2014), *Fiscal multipliers in a small euro area economy: How big can they get in crisis times?*, CEFAGE-UE Working Paper 2014/07.

**Pereira, A.M., J.M. Andraz** (2014), *On the Long-Term Macroeconomic Effects of Social Security Spending: Evidence for 12 EU Countries*, CEFAGE-UE Working Paper 2014/08.

**Ramalho, E.A., J.J.S. Ramalho** (2014), *Moment-based estimation of nonlinear regression models with boundary outcomes and endogeneity, with applications to nonnegative and fractional responses*, CEFAGE-UE Working Paper 2014/09.

**Santos, M., T.N. Sequeira, A. Ferreira-Lopes** (2014), *Income Inequality and Technological Adoption*, CEFAGE-UE Working Paper 2014/10.

**Simões, A.J., J. Ventura, L.A.G. Coelho** (2014), *Foreign Direct Investment and Fiscal Policy - A Literature Survey*, CEFAGE-UE Working Paper 2014/11.

**Mansidão, R., L.A.G. Coelho** (2014), *Logistics Performance: a Theoretical Conceptual Model for Small and Medium Enterprises*, CEFAGE-UE Working Paper 2014/12.

**Morgado, A., T.N. Sequeira, M. Santos, A. Ferreira-Lopes, A.B. Reis** (2014), *Measuring Labour Mismatch in Europe*, CEFAGE-UE Working Paper 2014/13.

**Costa, M.P., C.P. Pires** (2014), *Capital Structure, Product Market Competition and Default Risk*, CEFAGE-UE Working Paper 2014/14.

**Ferreira, P., A. Dionisio, G. Zebende** (2014), *Why does the Euro fail? The DCCA approach*, CEFAGE-UE Working Paper 2014/15.

**Sousa, M.R.** (2014), *Optimal Bail-out and Bail-in policy mix: Lessons from the Banco Espírito Santo (BES) failure*, CEFAGE-UE Working Paper 2014/16.

Moutinho, V., J.M. Xavier, P.M. Silva (2014), *Examining the energy-related CO2 emissions using Decomposition Approach in EU-15 before and after the Kyoto Protocol*, CEFAGE-UE Working Paper 2014/17.

**Rego, M.C.**, I.J. Ramos, M.M. Oliveira, **M.R. Lucas**, M.S. Baltazar (2014), *Differences in intra-regional development in Portugal? A multivariate approach*, CEFAGE-UE Working Paper 2014/18.

Oliveira, M.F.L., M.L.S. Carvalho, **M.R. Lucas**, **P.D. Henriques** (2014), *Price Transmission in the Milk Portuguese Market*, CEFAGE-UE Working Paper 2014/19.

**CEFAGE-UE**  
Universidade de Évora  
Palácio do Vimioso (Gab. 224)  
Largo Marquês de Marialva, 8  
7000-809 Évora  
Portugal

**E-mail:** [cefage@uevora.pt](mailto:cefage@uevora.pt)

**Phone:** (+351) 266 706 581

**Webpage:** [www.cefage.uevora.pt](http://www.cefage.uevora.pt)

