

# CEFAGE

centro de estudos e formação avançada em gestão e economia

## SUMMARY OF SCIENTIFIC RESEARCH

# 2016



UNIVERSIDADE  
DE ÉVORA



**SUMMARY OF SCIENTIFIC RESEARCH  
2016**

---

***Editor***

Sérgio Santos  
Jacinto Vidigal da Silva

***Technical Support and Graphical Design***

Ângela S. L. Pacheco

---

***February 2017***



**Universidade de Évora**

Palácio do Vimioso,  
Largo Marquês de Marialva, 8  
7000-809 Évora, Portugal

E-mail: [cefage@uevora.pt](mailto:cefage@uevora.pt)  
Web: [www.cefage.uevora.pt](http://www.cefage.uevora.pt)  
Telephone: (+351) 266 706 581

# CONTENTS

FOREWORD.....	1
1. OVERVIEW	
1.1. Aims and Policy .....	2
1.2. Research Interests.....	3
2. ORGANIZATIONAL STRUCTURE	
2.1. Organization Chart .....	4
2.2. Executive Board .....	5
2.3. Research Group Coordinators .....	6
2.4. Doctoral Program Coordinators.....	7
2.5. Branch Coordinators .....	9
2.6. Research Advisory Board .....	10
3. RESEARCH GROUPS	
3.1. Econometrics, Statistics and Operations Research	
3.1.1. Team members .....	11
3.1.2. Publications .....	13
3.1.3. Editorial activities .....	15
3.1.4. Thesis supervision .....	15
3.1.5. Funded research projects .....	17
3.1.6. Presentations at conferences and seminars.....	18
3.2. Finance	
3.2.1. Team members .....	20
3.2.2. Publications .....	21
3.2.3. Editorial activities .....	23
3.2.4. Thesis supervision .....	24
3.2.5. Funded research projects .....	26
3.2.6. Presentations at conferences and seminars.....	26
3.3. Industrial Economics and Business Strategy	
3.3.1. Team members .....	28
3.3.2. Publications .....	31
3.3.3. Editorial activities .....	37
3.3.4. Thesis supervision .....	38
3.3.5. Funded research projects .....	43
3.3.6. Presentations at conferences and seminars.....	44
3.4. Labour, Regional and Macroeconomics	
3.4.1. Team members .....	49
3.4.2. Publications .....	52

3.4.3. Editorial activities .....	56
3.4.4. Thesis supervision .....	57
3.4.5. Funded research projects .....	60
3.4.6. Presentations at conferences and seminars.....	62
 4. ORGANIZATION OF SCIENTIFIC EVENTS	
4.1. Conferences and Workshops .....	65
4.2. Courses and Technical Seminars .....	65
4.3. Research Seminars .....	65
 5. WORKING-PAPER SERIES .....	68

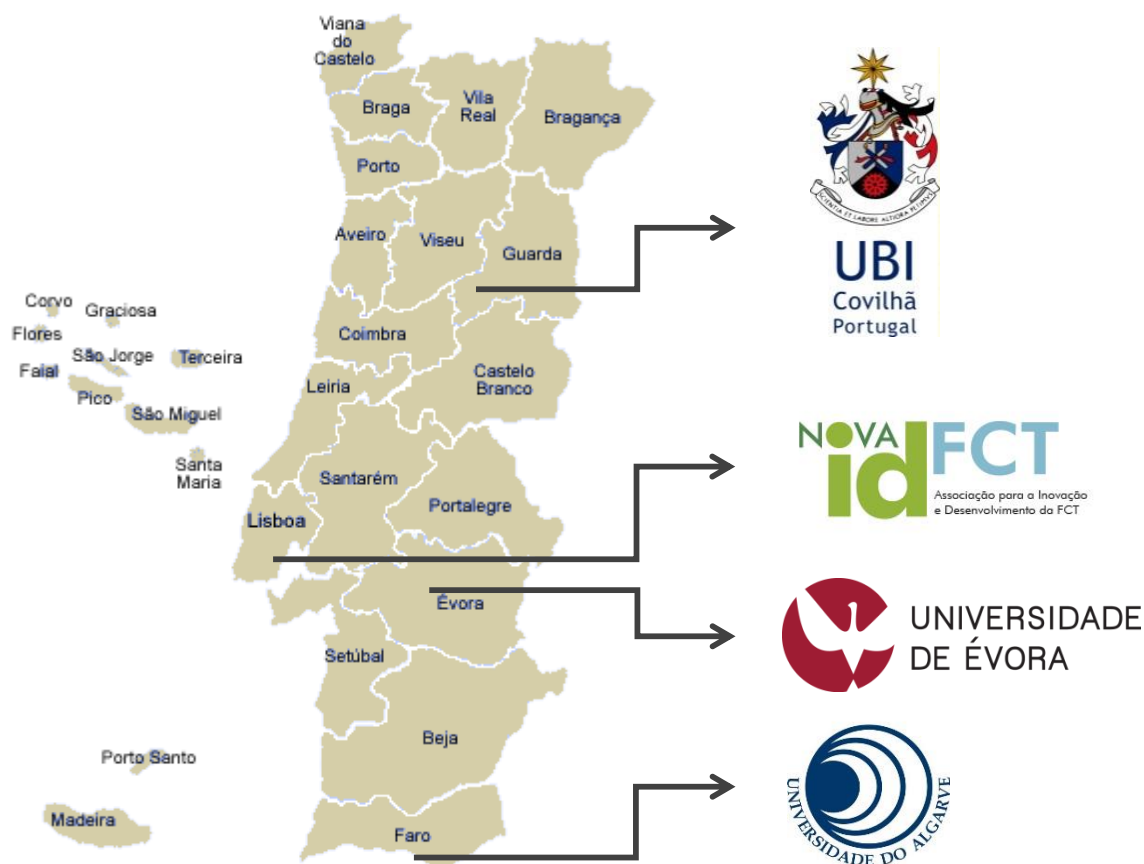
## FOREWORD

The Center for Advanced Studies in Management and Economics (CEFAGE) is a Portuguese research unit created in 2006 by a group of researchers from the *Universidade de Évora*. Still hosted by this university, CEFAGE has currently also branches located at three other institutions: *Universidade da Beira Interior*, *Universidade do Algarve* and *Universidade Nova de Lisboa* (Faculty of Science and Technology).

The main priority of CEFAGE is to promote high-quality research in Economics and Management. In 2007, in its first evaluation by the Portuguese Foundation for Science and Technology (FCT), CEFAGE achieved the highest grade: *Excellent*. In 2014, CEFAGE was evaluated as *Very Good*.

Since 2011, CEFAGE is also in charge of the Doctoral Program in Economics of the consortium *Universidade de Évora / Universidade da Beira Interior* and the Doctoral Program in Management of the *Universidade de Évora*.

In 2016, the research unit of CEFAGE had 47 integrated members holding a Ph.D., 2 members who finished their Ph.D. in 2016 and 1 member who is working towards his Ph.D.. This report describes the research activities of these researchers.



# 1. OVERVIEW

## 1.1. Aims and Policy

The main priority of CEFAGE is to promote the production and diffusion of high-quality research in Economics and Management. To achieve this goal, it is CEFAGE's policy:

- To offer its members means to produce research publishable in well regarded scientific international journals, supporting the presentation of their on-going work in scientific meetings and the acquisition of books, software packages and databases
- To maintain a ranking of Economics and Management journals, which is used to reward researchers with high-quality publications
- To promote cooperation with researchers from other institutions, through the participation of its members in national and international scientific networks, the participation in joint research projects and co-authorship of scientific articles
- To keep a very stimulating research environment and promote a close cooperation between its members, encouraging the publication of their preliminary work in CEFAGE's Working Paper Series and organizing an internal workshop series in order to facilitate the communication and sharing of ideas among them
- To organize relevant international conferences in the areas of Economics and Management, so as to increase the international visibility of CEFAGE as a research group
- To organize Summer Schools, specialized short workshops and technical seminars in order to keep its members and Ph.D. students up to date with respect to the most recent advances in the fields of Economics and Management and well prepared to use the databases and the software packages available at CEFAGE
- To involve its Ph.D. students on CEFAGE regular research activities, who will have the opportunity to participate in research projects and conferences, to present their work at the annual CEFAGE Doctoral Consortium and to publish their preliminary work in CEFAGE's Working Paper Series

In addition, CEFAGE also supports the consulting activities of its members.

## 1.2. Research Interests

The research interests of CEFAGE-UE's members cover, among other fields, agricultural economics, econometrics, environmental resources, finance, industrial organization, innovation and entrepreneurship, international economics, labour economics, marketing and consumer behaviour, spatial economics and sustainable growth. Therefore, CEFAGE-UE is divided into four research groups:

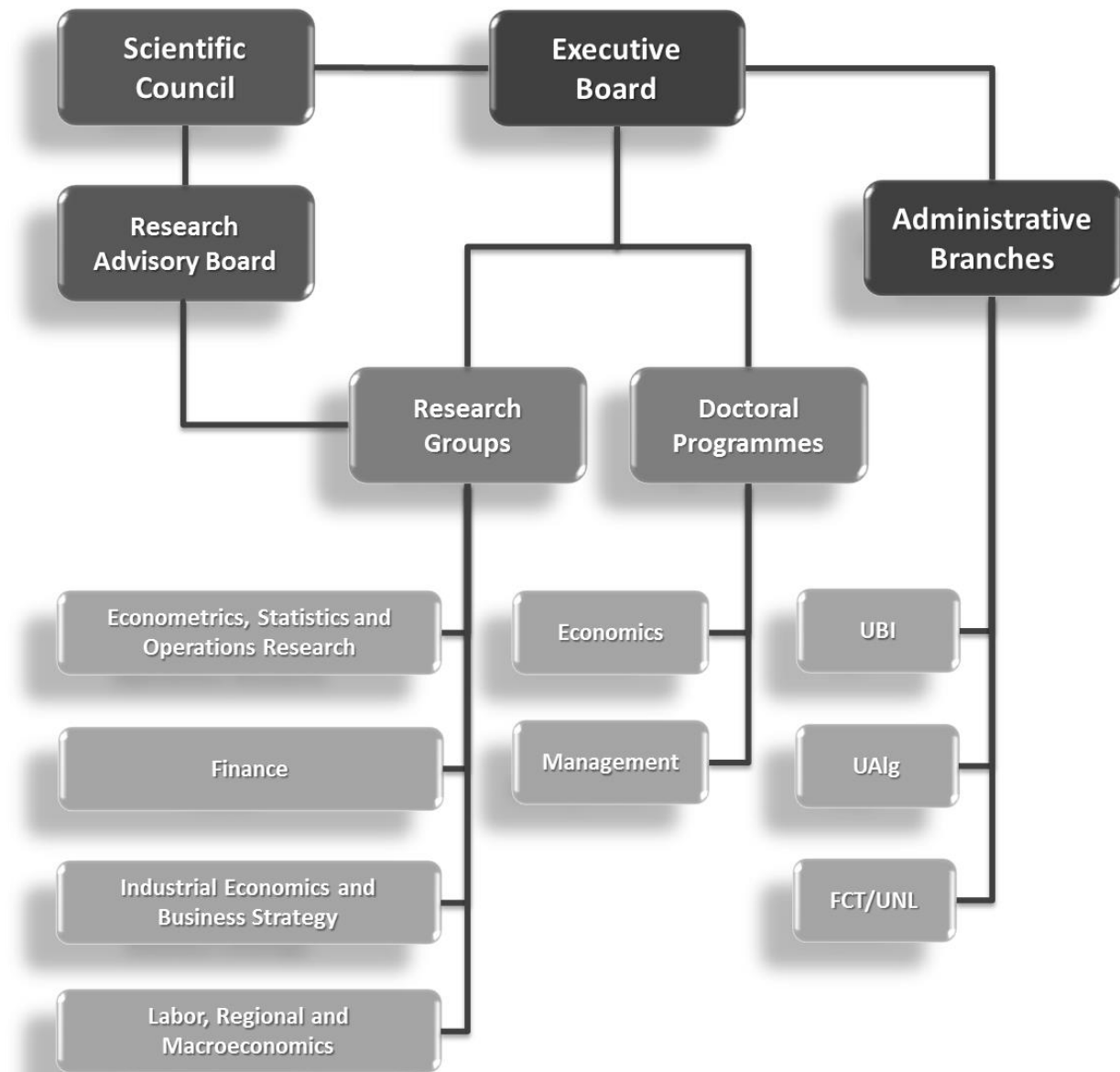
- Econometrics, Statistics and Operations Research
- Finance
- Industrial Economics and Business Strategy
- Labour, Regional and Macroeconomics

Considering our members' current research interests, their skills and competencies, in the period 2016/2020 CEFAGE research will be organized along the following major eleven thematic strands:

1. Econometrics of Discrete and Limited Outcomes
2. Strategy, Operations and Performance
3. Environmental and Agrifood Economics and Management - Theoretical and Empirical Approaches
4. Capital Structure, Investment Decisions and Firm Performance
5. Asset Markets and Investor Behavior
6. Regulation and Competition Policy
7. Entrepreneurship, Innovation and Industry Dynamics
8. Labor Market and Development
9. Economic Growth and Development: Theory, Policy and Empirics
10. Theoretical and Empirical Advances in Tourism Economics
11. International Monetary Economics and Integration

## 2. ORGANIZATIONAL STRUCTURE

### 2.1. Organization Chart





## 2.2. Executive Board



***Jacinto António Setúbal Vidigal da Silva***  
**Director**

Ph.D. (Business Management), U. Évora, 1997  
B.A. (Business Management), U. Évora, 1983



***Sérgio Pereira dos Santos***  
**Scientific coordinator**

Ph.D. (Management Science), U. Strathclyde, 2004  
M.Sc. (Economics and Econometrics), U. Manchester, 1995  
B.A. (Business Management), U. Algarve, 1993



***Andreia Teixeira Marques Dionísio***  
**Vice-Director**

Ph.D. (Management), ISCTE, 2006  
M.Sc. (Organization and Information Systems), U. Évora, 2001  
B.A. (Business Management), U. Évora, 1997



***Carlos Manuel Rodrigues Vieira***  
**Vice-Director**

Ph.D. (Economics), U. Loughborough, 1999  
M.Sc. (Economics), ISEG/UTL, 1995  
B.A. (Economics), U. Évora, 1990



***Maria Raquel David Pereira Ventura Lucas***  
**Vice-Director**

Ph.D. (Business Management), U. Évora, 1995  
B.A. (Zootechnic Engineering), U. Évora, 1986

## 2.3. Research Group Coordinators



***Cesaltina Maria Pacheco Pires***

**Coordinator of CEFAGE's Industrial Economics and Business Strategy group**

Ph.D. (Economics), M.I.T., 1994  
M.B.A., INSEAD, 1989  
B.A. (Economics), U. Nova, 1985



***Joaquim José dos Santos Ramalho***

**Coordinator of CEFAGE's Econometrics, Statistics and Operations Research group**

Ph.D. (Economics), U. Bristol, 2002  
M.Sc. (Mathematics Applied to Economics and Business), ISEG/UTL, 1996  
B.A. (Economics), U. Évora, 1993



***Tiago Miguel Guterres Neves Sequeira***

**Coordinator of CEFAGE's Labour, Regional and Macroeconomics group**

Ph.D. (Economics), U. Nova Lisboa, 2004  
B.A. (Economics), U. Beira Interior, 1999



***Zélia Serrasqueiro***

**Coordinator of CEFAGE's Finance group**

Ph.D. (Management), U. Beira Interior, 2001  
B.A. (Management), ISEG/UTL, 1988

## 2.4. Doctoral Program Committees

### Doctoral Program in Economics



***Esmeralda Jesus Ratinho Lopes Arranhado Ramalho***

**Director**

Ph.D. (Economics), U. Bristol, 2002  
M.Sc. (Mathematics Applied to Economics and Business), ISEG/UTL, 1996  
B.A. (Economics), U. Évora, 1994



***Isabel Maria Pereira Viegas Vieira***

**Vice-Director**

Ph.D. (Economics), U. Loughborough, 1999  
M.Sc. (Economics), ISEG/UTL, 1995  
B.A. (Economics), U. Évora, 1990



***Carlos Manuel Rodrigues Vieira***

**Vice-Director**

Ph.D. (Economics), U. Loughborough, 1999  
M.Sc. (Economics), ISEG/UTL, 1995  
B.A. (Economics), U. Évora, 1990



***Tiago Miguel Guterres Neves Sequeira***

**Vice-Director**

Ph.D. (Economics), U. Nova Lisboa, 2004  
B.A. (Economics), U. Beira Interior, 1999

## Doctoral Program in Management



***Cesaltina Maria Pacheco Pires***

**Director**

Ph.D. (Economics), M.I.T., 1994  
M.B.A., INSEAD, 1989  
B.A. (Economics), U. Nova, 1985



***Luís Alberto Godinho Coelho***

**Vice-Director**

Ph.D. (Management), U. Évora, 2006  
M.Sc. (Agricultural Economics), U.Évora, 1996  
B.A. (Management), U.Évora, 1992



***Rui Filipe Cerqueira Quaresma***

**Vice-Director**

Ph.D. (Management), U. Sevilla, 2005  
M.Sc. (Industrial Management and Strategy), ISEG/UTL, 1997  
B.A. (Business Management), U. Évora, 1993

## 2.5. Branch Coordinators



***Duarte Brito***

**Coordinator of CEFAGE's FCT/UNL branch**

Ph.D. (Economics), U. Nova de Lisboa, 2001  
B.A. (Economics), U. Nova de Lisboa, 1993



***Carla Alexandra da Encarnação Filipe Amado***

**Coordinator of CEFAGE's UAlg branch**

Ph.D. (Industrial and Business Studies), U. Warwick, 2003  
M.Sc. (Economics and Econometrics), U. Manchester, 1996  
B.A. (Business Studies), U. Algarve, 1995



***Tiago Miguel Guterres Neves Sequeira***

**Coordinator of CEFAGE's UBI branch**

Ph.D. (Economics), U. Nova Lisboa, 2004  
B.A. (Economics), U. Beira Interior, 1999

## 2.6. Research Advisory Board



***Anders Rahbek***

Professor of Economics  
Department of Economics, University of Copenhagen



***Diego Comin***

Professor of Economics  
Economics Department, Dartmouth College



***Fiona Scott Morton***

Theodore Nierenberg Professor of Economics  
Yale School of Management, Yale University



***Gordon J. Alexander***

John Spooner Chair in Investment Management  
Carlson School of Management, University of Minnesota



***Konrad Stahl***

Professor of Economics  
Department of Economics, University of Mannheim



***Luís M.B. Cabral***

Paganelli-Bull Professor of Economics and International Business  
Department of Economics, Stern School of Business, New York University



***Mehmet Caner***

Professor of Economics  
Department of Economics, Ohio State University

## 3. RESEARCH GROUPS

### 3.1. Econometrics, Statistics and Operations Research

#### 3.1.1. Team members



**Andreia Teixeira Marques Dionísio Basílio**

UNIVERSIDADE DE ÉVORA

Ph.D. (Management), ISCTE, 2006

M.Sc. (Organization and Information Systems), U. Évora, 2001

B.A. (Business Management), U. Évora, 1997

Research interests: *Econometrics; Econophysics; Financial Markets.*



**António Manuel de Sousa Xavier**

UNIVERSIDADE DO ALGARVE

Ph.D. (Ciências Agrárias), U. Algarve, 2014

M.Sc. (Sustainable Management of Rural Spaces), U. Algarve, 2009

B.A. (Geography), U. Coimbra, 2005

Research interests: *Forest Management; Agrarian Economy; Natural Resources Economy; Applied Geography.*



**Carla Alexandra da Encarnação Filipe Amado**

UNIVERSIDADE DO ALGARVE

Ph.D. (Industrial and Business Studies), U. Warwick, 2003

M.Sc. (Economics and Econometrics), U. Manchester, 1996

B.A. (Business Studies), U. Algarve, 1995

Research interests: *Performance Measurement and Management; Efficiency, Effectiveness and Equity Assessment in the Provision of Health Services, The use of the nonparametric technique 'Data Envelopment Analysis' for formative evaluation.*



**Carlos Alberto Falcão Marques**

UNIVERSIDADE DE ÉVORA

Ph.D. (Agricultural Economics), U. Purdue, 1988

M.Sc. (Agricultural Economics), U. Purdue, 1985

B.A. (Business Management), U. Évora, 1981

Research interests: *Agricultural Policy, Development and Trade; Natural Resources and Environmental Economics.*



**Esmeralda Jesus Ratinho Lopes Arranhado Ramalho**

UNIVERSIDADE DE ÉVORA

Ph.D. (Economics), U. Bristol, 2002

M.Sc. (Mathematics Applied to Economics and Business), ISEG/UTL, 1996

B.A. (Economics), U. Évora, 1994

Research interests: *Microeconometrics.*



**Joaquim José dos Santos Ramalho**  
INSTITUTO UNIVERSITÁRIO DE LISBOA

Ph.D. (Economics), U. Bristol, 2002  
M.Sc. (Mathematics Applied to Economics and Business), ISEG/UTL, 1996  
B.A. (Economics), U. Évora, 1993

Research interests: *Microeconometrics; Fractional Regression Models; GMM and GEL Estimation and Inference; Applied Corporate Finance.*



**Luís Alberto Godinho Coelho**  
UNIVERSIDADE DE ÉVORA

Ph.D. (Management), U. Évora, 2006  
M.Sc. (Agricultural Economics), U.Évora, 1996  
B.A. (Management), U.Évora, 1992

Research interests: *Decision Theory; Mathematical Programming; Agricultural Management.*



**Paulo Jorge Silveira Ferreira**  
INSTITUTO POLITÉCNICO DE PORTALEGRE

Ph.D. (Management), U. Évora, 2012  
M.Sc. (Economics), U. Évora, 2006  
B.A. (Economics), U. Évora, 2003

Research interests: *Econometrics; Monetary and Financial Economics; Entrepreneurship and Innovation; Econophysics.*



**Rui Manuel de Sousa Fragoso**  
UNIVERSIDADE DE ÉVORA

Ph.D. (Management), U. Évora, 2001  
M.Sc. (Agricultural Economics), I. Agronomique Méditerranéen de Montpellier, 1996  
B.A. (Animal Production Engineering), U. Évora, 1993

Research interests: *Agribusiness and Agricultural Economics; Natural Resources and Environmental Economics.*



**Sérgio Pereira dos Santos**  
UNIVERSIDADE DO ALGARVE

Ph.D. (Management Science), U. Strathclyde, 2004  
M.Sc. (Economics and Econometrics), U. Manchester, 1995  
B.A. (Business Management), U. Algarve, 1993

Research interests: *Performance Measurement and Management; Efficiency Assessment and Data Envelopment Analysis; Strategy Implementation.*



### 3.1.2. Publications

#### i) Articles published in scientific peer-review journals

##### i.1) Articles published in selected journals (indexed in CEFAGE ranking)

Forthcoming:

**Amado, C., S. Santos, J. Serra** (2017), "Does partial privatisation improve performance? Evidence from a chain of hotels in Portugal", *Journal of Business Research*, 73, 9-19.

([dx.doi.org/10.1016/j.jbusres.2016.12.001](https://doi.org/10.1016/j.jbusres.2016.12.001))

**Ramalho, E., J. Ramalho**, "Moment-based estimation of nonlinear regression models with boundary outcomes and heterogeneity, with applications to non-negative and fractional responses", *Econometric Reviews*, forthcoming.

([dx.doi.org/10.1080/07474938.2014.976531](https://doi.org/10.1080/07474938.2014.976531))

Silva, V.G., **E. Ramalho, C. Vieira**, "The Use of Cheques in the European Union: A Cross-Country Analysis", *Open Economies Review*, forthcoming.

([dx.doi.org/10.1007/s11079-0169412-1](https://doi.org/10.1007/s11079-0169412-1))

2016

**Amado, C., J. São José, S. Santos** (2016), "Measuring active ageing: A Data Envelopment Analysis approach", *European Journal of Operational Research*, 255(1), 207-223.

([dx.doi.org/10.1016/j.ejor.2016.04.048](https://doi.org/10.1016/j.ejor.2016.04.048))

Bastos, J., **J. Ramalho** (2016), "Nonparametric Models of Financial Leverage Decisions", *Bulletin of Economic Research*, 68(4), 348-366.

([dx.doi.org/10.1111/boer.12054](https://doi.org/10.1111/boer.12054))

Ferreira, F.A.F., **S. Santos** (2016), "Comparing trade-off adjustments in credit risk analysis of mortgage loans using AHP, Delphi and MACBETH", *International Journal of Strategic Property Management*, 20(1), 44-63.

([dx.doi.org/10.3846/1648715X.2015.1105321](https://doi.org/10.3846/1648715X.2015.1105321))

**Ferreira, P., A. Dionísio** (2016), "What are the conditions for good innovation results? A fuzzy-set approach for European Union", *Journal of Business Research*, 69(11), 5396-5400.

([dx.doi.org/10.1016/j.jbusres.2016.04.144](https://doi.org/10.1016/j.jbusres.2016.04.144))

Murteira, J.M.R., **J. Ramalho** (2016), "Regression Analysis of Multivariate Fractional Data", *Econometric Reviews*, 35(4), 515-552.

([dx.doi.org/10.1080/07474938.2013.806849](https://doi.org/10.1080/07474938.2013.806849))

Silva, V., **E. Ramalho, C. Vieira** (2016), "The impact of SEPA in credit transfer payments: Evidence from the euro area", *Research in International Business and Finance*, 38, 404-416.

([dx.doi.org/10.1016/j.ribaf.2016.04.013](https://doi.org/10.1016/j.ribaf.2016.04.013))

##### i.2) Articles published in ISI journals (not indexed in CEFAGE ranking)

Forthcoming:

**Ferreira, P., L. Loures, J. Nunes, A. Dionísio** (2017), "The behaviour of share returns of football clubs: An econophysics approach", *Physica A*, 472, 136-144.

([dx.doi.org/10.1016/j.physa.2017.01.022](https://doi.org/10.1016/j.physa.2017.01.022))

Freitas, M.B.C., **A.S. Xavier, R. Fragoso**, "An integrated decision support system for the Mediterranean forests", *Land Use Policy*, forthcoming.

São José, J., **C. Amado**, "On studying ageism in long-term care: a systematic review of the literature", *International Psychogeriatrics*, forthcoming.

([dx.doi.org/10.1017/S1041610216001915](https://doi.org/10.1017/S1041610216001915))

São Jose, J., V. Timonen, **C. Amado, S. Santos** (2017), "A critique of the Active Ageing Index", *Journal of Aging Studies*, 40, 49-56.

[dx.doi.org/10.1016/j.jaging.2017.01.001](https://doi.org/10.1016/j.jaging.2017.01.001)

**Ramalho, E. J. Ramalho**, R. Evangelista, "Combining micro and macro data in hedonic price indexes", *Statistical Methods and Applications*, forthcoming.

[dx.doi.org/10.1007/s10260-016-0367-6](https://doi.org/10.1007/s10260-016-0367-6)

2016

**Ferreira, P.** (2016), "Does the Euro crisis change the cross-correlation pattern between bank shares and national indexes", *Physica A*, 463, 320-329.

[dx.doi.org/10.1016/j.physa.2016.07.033](https://doi.org/10.1016/j.physa.2016.07.033)

**Ferreira, P., A. Dionísio** (2016), "How long is the memory of the US stock market?", *Physica A*, 451, 502-506.

[dx.doi.org/10.1016/j.physa.2016.01.080](https://doi.org/10.1016/j.physa.2016.01.080)

**Ferreira, P., A. Dionísio**, G. Zebende (2016), "Why does the Euro fails? The DCCA approach", *Physica A*, 443, 543-554.

[dx.doi.org/10.1016/j.physa.2015.10.013](https://doi.org/10.1016/j.physa.2015.10.013)

### i.3) Articles published in other peer-reviewed journals

Forthcoming:

Caetano, J., **P. Ferreira**, "Desafios para uma nova governação Económica na Zona Euro", *Debater a Europa*, forthcoming.

**Ferreira, P., A. Dionísio**, "Long range dependence in G7 stock markets return rates using mutual information and detrended cross-correlation analysis", *Studies in Economics and Econometrics*, forthcoming.

**Ramalho, E., J. Ramalho, L.M.S. Coelho**, "Exponential regression of fractional-response fixed-effects models with an application to firm capital structure", *Journal of Econometric Methods*, forthcoming.

[dx.doi.org/10.1515/jem-2015-0019](https://doi.org/10.1515/jem-2015-0019)

2016

**Ferreira, P.** (2016), "Asian Stock Markets' Efficiency: An Econophysics Approach", *Asian Journal of Economics, Business and Accounting*, 1(1), 1-9.

**Ferreira, P.** (2016), "Apple, Alphabet or Microsoft: Which Is the Most Efficient Share?", *Econometric Research in Finance*, 1(2), 67-79.

**Ferreira, P., A. Dionísio** (2016), "Entrepreneurship rates the fuzzy-set approach", *Eastern European Business and Economics Journal*, 2(2), 111-128.

**Ferreira, P., A. Dionísio** (2016), "G7 Stock Markets: Who is The First to Defeat The DCCA Correlation?", *Review of Socio-Economic Perspectives*, 1(1), 107-120.

**Ferreira, P., A. Dionísio** (2016), "GDP growth and convergence determinants in the European Union: a crisp-set analysis", *Review of Economic Perspectives – Národohospodárský Obzor*, 16(4), 279–296.

[dx.doi.org/10.1515/revecp-2016-0017](https://doi.org/10.1515/revecp-2016-0017)

**Fragoso, R., M.C. Rego**, V. Bushenkov (2016), "Clustering of Territorial Areas: A Multi-Criteria Districting Problem", *Journal of Quantitative Economics*, 14(2), 179-198.

[dx.doi.org/10.1007/s40953-016-0030-y](https://doi.org/10.1007/s40953-016-0030-y)

**Xavier, A.S.,** M.B.C. Freitas, C.R. Antunes (2016), "The water surfaces' ecosystem services and the opinion of different stakeholders: an approach based on goal programming", *International Journal of Management and Decision Making*, 15(2), 184-204.

([dx.doi.org/10.1504/IJMDM.2016.077771](https://doi.org/10.1504/IJMDM.2016.077771))

## ii) Articles and chapters published in scientific books

Forthcoming:

---

2016

**Santos, S., C. Amado** (2016), "Data Envelopment Analysis, tourism", in Jafari, H. Xiao (eds), *Encyclopedia of Tourism*, Berlin: Springer International Publishing AG (ISBN 978-3-319-01383-1).

## iii) Scientific, pedagogical and technical books

Forthcoming:

---

2016

**Ferreira, P.,** A. Morgado (2016), *Exercícios de Princípios de Microeconomia*, Lisboa: Rei dos Livros. (ISBN 978-989-8823-43-4).

**Ferreira, P.,** A. Morgado (2016), *Princípios de Microeconomia*, Lisboa: Rei dos Livros (ISBN 978-9-898-82317-5).

## 3.1.3. Editorial activities

### i) Edition of scientific books

---

### ii) Edition of journal issues

---

## 3.1.4. Thesis supervision

### i) Ph.D. supervisions concluded

Working title: *A estrutura organizacional das bibliotecas universitárias em Portugal: como responder aos desafios.*

Author: Margarida Vargues

Supervisor(s): **Andreia Dionísio**, António Calixto

Degree: Ph.D. (Management)

Institution: Universidade de Évora

Working Title: *Emergetic evaluation of cattle rearing in a montado farm*

Author: Ana M.P. da Fonseca

Supervisor(s): **Carlos Marques**, M<sup>a</sup> Teresa Pinto Correia

Degree: Ph.D. (Interdisciplinary Landscape Management)

Institution: Universidade de Évora

Working Title: *O Impacto da Mentoria e Relações de Ajuda no Processo Informal de Employee Branding: Uma Abordagem Multimetodológica*

Author: Andrea I.O.C. Sousa

Supervisor(s): João Thomaz, **Paulo Ferreira**, Fátima Jorge

Degree: PhD (Management)

Institution: Universidade de Évora

## ii) Ph.D. supervisions in progress

Working Title: *A Saúde na Região Autónoma dos Açores: Um novo Percurso baseado na Evidência Populacional (Projeto SaRAA)*

Author: Duarte P.S. Tavares

Supervisor(s): **Carla Amado, Sérgio Santos**

Degree: Ph.D. (Economic and Management Sciences)

Institution: Universidade do Algarve

Working Title: *Exploring Performance Assessment and Incentive Regulation in the Context of Primary Health Care*

Author: Olena Kalinichenko

Supervisor(s): **Carla Amado, Sérgio Santos**

Degree: Ph.D. (Economic and Management Sciences)

Institution: Universidade do Algarve

Working Title: *As (des)igualdades entre mulheres e homens no mercado de trabalho e a performance dos países da União Europeia*

Author: Carina R.M. Jordão

Supervisor(s): Virgínia Ferreira, **Carla Amado**

Degree: Ph.D. (Labour Relations, Social Inequalities and Trade Unionism)

Institution: Universidade de Coimbra

Working Title: *Governança e da gestão económica da água na agricultura dos polos de Petrolina e Juazeiro no Vale de São Francisco no Brasil*

Author: José Aidran Mudo

Supervisor(s): **Carlos Marques**

Degree: Ph.D. (Management)

Institution: Universidade de Évora

Working Title: *Pluriatividade e rendas não agrícolas no Perímetro Irrigado Senador Nilo Coelho no nordeste do Brasil*

Author: Amós Garcia Ferreira

Supervisor(s): **Carlos Marques**

Degree: Ph.D.(Management)

Institution: Universidade de Évora

Working Title: *Essays on the Use of Payment Instruments*

Author: Vânia Silva

Supervisor(s): **Carlos Vieira, Esmeralda Ramalho**

Degree: Ph.D. (Economics)

Institution: Universidade de Évora

Working Title: *Is energy efficiency reflected in residential property prices in Portugal? An investigation based on hedonic house price functions and quantile regression analysis*

Author: Rui Evangelista

Supervisor(s): **Esmeralda Ramalho**, João Andrade e Silva

Degree: Ph.D. (Economics)

Institution: Universidade de Évora

Working Title: *Análise de Eficiência e Desempenho Económico-financeiro do Sector Bancário Europeu*

Author: André Alves

Supervisor(s): **Luís Coelho, Esmeralda Ramalho**

Degree: Ph.D. (Management)

Institution: Universidade de Évora

Working Title: *Determinants of the delegation of authority by shareholders to board members and CEOs and its effects on organizational performance: The case of the private firms in Iran*

Author: Mohammad Reza Chekini

Supervisor(s): **Sérgio Santos, Carla Amado**

Degree: Ph.D. (Economic and Management Sciences)

Institution: Universidade do Algarve

### iii) M.Sc. supervisions concluded

Working Title: *Caracterização da Cultura Organizacional utilizando o Modelo dos Valores Contrastantes: o Caso da Universidade de Évora*

Author: Nuno M. T. Antunes

Supervisor(s): Fátima Jorge, **Andreia Dionísio**

Degree: M.Sc. (Management)

Institution: Universidade de Évora

Working Title: *Qualidade nos serviços prestados aos turistas - Aplicação do modelo SERVQUAL em cidades históricas património da humanidade*

Author: André Ventinhas

Supervisors: Margarida Saraiva, **Andreia Dionísio**

Degree: M.Sc. (Management)

Institution: Universidade de Évora

Working Title: *Eficiência das Unidades de Saúde Familiares na Diabetes – Uma abordagem por Data Envelopment Analysis*

Author: Ana C.R. Henriques

Supervisor(s): **Carla Amado, Sérgio Santos**

Degree: M.Sc. (Health Care Services Management)

Institution: Universidade do Algarve

Working Title: *A Cadeia de Valor e Formação de Preços do Azeite Virgem Extra Português: Análise segundo 3 Sistemas Tipo de Produção Agro-Industrial*

Author: André F. M. Cardoso

Supervisor(s): **Carlos Marques**

Degree: M.Sc. (Applied Economics and Management)

Institution: Universidade de Évora

Working Title: *Enquadramento fiscal da atividade agrícola*

Author: Marco A.S.F. Sequeira

Supervisor(s): **Paulo Ferreira**

Degree: M.Sc. (Sustainable Agriculture)

Institution: Escola Superior Agrária de Elvas

Working Title: *Avaliação do desempenho das entidades gestoras dos serviços de resíduos urbanos em Portugal*

Author: Filipe M.Q. André

Supervisor(s): **Sérgio Santos, Carla Amado**

Degree: M.Sc. (Business Management)

Institution: Universidade do Algarve

## 3.1.5. Funded research projects

### i) Projects funded by national science agencies

Title: *Projeto de Desenvolvimento do Plano de Sustentabilidade dos Vinhos do Alentejo (ALT20-01-0853-FEDER-000013)*

CEFAGE researchers: **M. Raquel Lucas** (Coord.), **M. Conceição Rego**, **Rui Fragoso**

Partner institutions: CVRA (Comissão Vitivinícola da Região Alentejana)

Funding: 266.256€ (Alentejo 2020)

Period: 2016-2018

## ii) Projects funded by international research programs

---

## iii) Projects funded by international industry-related programs

Titlre: *FlexStone – Novas Tecnologias para a Competitividade da Pedra natural (09/SI/2015)*

CEFAGE researchers: **Andreia Dionísio, Luís Coelho, M. Raquel Lucas**

Partner institutions: CEI, Universidade de Évora, IPP, Cevalor, Solancis, Torre

Funding: 2.117.962 (Programa Operacional para a Competitividade e Internacionalização, Portugal 2020)

Period: 01/07/2015 – 01/07/2017

## iv) Projects funded by national industry-related programs

---

## 3.1.6. Presentations at conferences and seminars

### i) Presentations at international conferences

**Ferreira, P., A. Dionísio**, “G7 stock markets: who is the first to defeat the DCCA correlation”, *21st Workshop on the Economic Science with Heterogeneous Interacting Agents (WEHIA 2016)*, Castellon, Spain, 21-24/06/2016.

**Ferreira, P., A. Dionísio**, “G7 stock markets: who is the first to defeat the DCCA correlation?”, *1st DOKTUR International Conference on Politics, Economics, Finance & Interdisciplinary Studies*, Prague, Czech Republic, 28-30/04/2016.

**Ferreira, P., A. Dionísio**, “What are the conditions for good innovation results? A fuzzy-set approach for European Union”, *The 6th Global Innovation and Knowledge Academy (GIKA)*, Valencia, Spain, 21-23/03/2016.

**Marques, C.**, “Portuguese recent macroeconomic context and trends: Consequences for agricultural and food business policies”, *Lucian Blaga University of Sibiu, International Week*, Romania, 16-21/07/2016.

Morais, A., A. Fialho, **A. Dionísio**, “Is the accounting quality after the mandatory adoption of IFRS a random walk?”, *7th Workshop on Accounting and Regulation*, Sienna, Italy, 7-9/07/2016.

Pereira, C., **J. Ramalho, J.V. Silva**, “The main determinants of banking crises in OECD countries”, *World Finance Conference 2016*, New York, USA, 29-31/07/2016.

**Xavier, A.S.**, M.B.C. Freitas, **R. Fragoso**, M.S. Rosário, “Agricultural Data Disaggregation at a Local Level: an Approach using Entropy and Supervised Classifications”, *Interdisciplinarity in Social and Human Sciences. International Congress*, Faro, Portugal, 5-6/05/2016.

### ii) Presentations at iberian or portuguese-spoken conferences

Baltazar, M.S., **M.C. Rego**, I. Ramos, M. Freire, **A. Dionísio, M.R. Lucas**, “Ligações e Percepções de Desenvolvimento Urbano-Rural em Portugal”, *IX Congresso Português de Sociologia - PORTUGAL, TERRITÓRIO DE TERRITÓRIOS*, Universidade do Algarve, Faro, Portugal, 6-8/07/2016.

**Dionísio, A.**, A. Silva, L. Lopes, A. Oliveira, M. Peres, **M.R. Lucas**, “Academia da Pedra Natural – Uma Parceria inovadora para o desenvolvimento de um setor base!” *ESADR 2016, VIII Congresso APDEA e II Encontro Lusófono de Economia, Sociologia, Ambiente e Desenvolvimento Rural*, Coimbra, Portugal, 7-9/09/2016.

Freire, C., I. Ramos, **M.C. Rego, A. Dionísio**, M.S. Baltazar, **M.R. Lucas**, “Agricultura Urbana: Impactos Económicos, Sociais e Ecológicos”, *ESADR 2016, VIII Congresso APDEA e II Encontro Lusófono de Economia, Sociologia, Ambiente e Desenvolvimento Rural*, Coimbra, Portugal, 7-9/09/2016.

Lobo, J.O.S., P.D. Henriques, **R. Fragoso**, **M.R. Lucas**, "As atividades da pesca e o rendimento dos pescadores do Distrito de Liqueça", *ESADR 2016, VIII Congresso APDEA e II Encontro Lusófono de Economia, Sociologia, Ambiente e Desenvolvimento Rural*, Coimbra, Portugal, 7-9/09/2016.

**Marques, C.**, "O Contexto Macroeconómico em Portugal: Implicações para a Agricultura e Complexo Agro-Alimentar", *ESADR 2016, VIII Congresso APDEA e II Encontro Lusófono de Economia, Sociologia, Ambiente e Desenvolvimento Rural*, Coimbra, Portugal, 7-9/09/2016.

**Marques, C.**, "Thirty Years Within the European Union: Performance, Current Situation and Perspectives for The Portuguese Agricultural and Food Business", *ESADR 2016, VIII Congresso APDEA e II Encontro Lusófono de Economia, Sociologia, Ambiente e Desenvolvimento Rural*, Coimbra, Portugal, 7-9/09/2016.

**Marques, C.**, "Did Agricultural and Food Business Change with the Financial and Economic Crisis in Portugal: An Empirical Answer based on Statistical data", *ESADR 2016, VIII Congresso APDEA e II Encontro Lusófono de Economia, Sociologia, Ambiente e Desenvolvimento Rural*, Coimbra, Portugal, 7-9/09/2016.

**Pires, C., A. Dionísio, L.A.G. Coelho**, "Estimating utility functions using GME", *Journal of Applied Statistics; Workshop on Maximum Entropy and its Applications*, Universidade de Aveiro, Aveiro, Portugal, 12/10/2016.

**Rego, M.C., A. Dionísio, I. Ramos, M.R. Lucas, M.S. Baltazar**, "Instituições de Ensino Superior e movimentos migratórios em Portugal: uma aplicação do método fuzzy", *6ª Conferência FORGES*, Universidade Estadual de Campinas, Campinas, Brasil, 28-30/11/2016.

**Rego, M.C., C. Freire, I. Ramos, A. Dionísio, M.S. Baltazar, M.R. Lucas**, "Vínculos Urbano-Rurais em Portugal e Perspectivas de Desenvolvimento", *ESADR 2016, VIII Congresso APDEA e II Encontro Lusófono de Economia, Sociologia, Ambiente e Desenvolvimento Rural*, Coimbra, Portugal, 7-9/09/2016.

**Xavier, A.S., M.B.C. Freitas, M.S. Rosário, R. Fragoso**, "A regional composite indicator for analysing agricultural sustainability: a goal programming approach", *VIII Congresso da APDEA e II Encontro Lusófono em Economia, Sociologia, Ambiente e Desenvolvimento Rural: Políticas Públicas para a Agricultura PÓS 2020- ESADR 2016*, Coimbra, Portugal, 07-09/09/2016.

**Xavier, A.S., M.B.C. Freitas, R. Fragoso, M.S. Rosário**, "An approach based on entropy to disaggregate agricultural data at local level: The case of the Alentejo region", *XI Colóquio Ibérico de Estudos Rurais: Smart and Inclusive Development in Rural Areas. XICIER 2016*, Vila Real, Portugal, 13-15/10/2016.

**Xavier, A.S., M.B.C. Freitas, R. Fragoso, M.S. Rosário**, "An approach based on remote detection and GIS to analyse forest and agricultural activities potentialities in the Algarve region", *VIII Congresso da APDEA e II Encontro Lusófono em Economia, Sociologia, Ambiente e Desenvolvimento Rural: Políticas Públicas para a Agricultura PÓS 2020- ESADR 2016*, Coimbra, Portugal, 07-09/09/2016.

**Xavier, A.S., M.S. Rosário, F. Valente, R. Fragoso, M.B.C. Freitas**, "An entropy approach to improve the results from supervised classifications: the case of the Algarve", *VIII Congresso da APDEA e II Encontro Lusófono em Economia, Sociologia, Ambiente e Desenvolvimento Rural: Políticas Públicas para a Agricultura PÓS 2020- ESADR 2016*, Coimbra, Portugal, 07-09/09/2016.

### iii) Seminars presented at other institutions

---

## 3.2. Finance

### 3.2.1. Team members



**Cristina Maria Pereira Viegas**

UNIVERSIDADE DO ALGARVE

Ph.D. (Management), U. Algarve, 2006  
M.Sc. (Management Sciences), ISEG/UTL, 1993  
B.A. (Business Management), U. Algarve, 1988

Research interests: *Financial Markets; Financial Derivatives; Real Options; Mathematical Finance.*



**Elisabete Gomes Santana Félix**

UNIVERSIDADE DE ÉVORA

Ph.D. (Management), ISCTE, 2008  
M.Sc. (Management Sciences), INDEG/ISCTE, 1999  
B.A. (Business Management), U. Évora, 1993

Research interests: *Venture Capital; Real Options; Elaboration and Financial Analysis of Investment Projects; Social Entrepreneurship.*



**Jacinto António Setúbal Vidigal da Silva**

UNIVERSIDADE DE ÉVORA

Ph.D. (Business Management), U. Évora, 1997  
B.A. (Business Management), U. Évora, 1983

Research interests: *Business; Financial Management; Managerial Economics.*



**Jorge Luís Pedreira Murteira Marques Casas Novas**

UNIVERSIDADE DE ÉVORA

Ph.D. (Management), U. Évora, 2003  
M.Sc. (Finance), ISCTE, 2000  
B.A. (Business Management), U. Évora, 1995

Research interests: *Management and Cost Accounting; Performance Management; Value Creation Process.*



**Luís Miguel Serra Coelho**

UNIVERSIDADE DO ALGARVE

Ph.D. (Management), U. Edinburgh, 2008  
M.Sc. (Management Research), Cranfield University, 2005  
M.Sc. (Finance), U. Algarve, 2003  
B.A. (Economics), U. Algarve, 2001

Research interests: *Behavioural Finance; Bankruptcy; Market-based Accounting Research.*





**Paulo Miguel Pereira da Silva**  
UNIVERSIDADE DE ÉVORA

Ph.D Student (Economics), U.Évora  
M.Sc. (Monetary and Financial Economics), ISEG/UTL, 2006  
B.A. (Economics), ISEG/UTL, 2001

*Research interests: Financial Markets; Corporate Finance; Financial Regulation.*



**Ricardo Vinícius Dias Jordão**

Ph.D. Student  
M.Sc. (Accounting and Controlling), Federal University of Minas Gerais, 2009  
M.Sc. (Business Administration), Dom Cabral Foundation, 2003  
B.A. (Accounting and Finance), Federal University of Minas Gerais, 2000

*Research interests: Accounting and Finance; Management Accounting and Control Systems; Mergers, Acquisitions and Business Associations; Knowledge Management and Intellectual Capital; Strategy and Competitiveness; Management in Organizations.*



**Victor Augusto Mendes dos Santos**  
COMISSÃO DO MERCADO DE VALORES MOBILIÁRIOS

Ph.D. (Economics), U. South Carolina, 1990,  
B.A. (Economics), U. Porto, 1982.

*Research interests: Financial Economics; Behavioral Finance; Corporate Governance.*



**Zélia Serrasqueiro**  
UNIVERSIDADE DA BEIRA INTERIOR

Ph.D. (Management), U. Beira Interior, 2001  
B.A. (Management), ISEG/UTL, 1988

*Research interests: Corporate Finance; Financial Institutions and Small Business Financing; Small Business Management and Entrepreneurship.*

## 3.2.2. Publications

### i) Articles published in scientific peer-review journals

#### i.1) Articles published in selected journals (indexed in CEFAGE ranking)

Forthcoming:

Matias, F., **Z. Serrasqueiro**, “Are there reliable determinant factors of capital structure decisions? Empirical study of SMEs in different regions of Portugal”, *Research in International Business and Finance*, forthcoming.  
([dx.doi.org/10.1016/j.ribaf.2016.09.014](https://doi.org/10.1016/j.ribaf.2016.09.014))

Nunes, P.M., **Z. Serrasqueiro**, “Short-Term Debt and Long-Term Debt Determinants in Small and Medium-Sized Hospitality Firms”, *Tourism Economics*, forthcoming.  
([dx.doi.org/10.5367/te.2015.0529](https://doi.org/10.5367/te.2015.0529))

Pires, A., **J.C. Novas**, M. Saraiva, A. Coelho, "How Companies Use the Information about Quality Related Costs", *Total Quality Management & Business Excellence*, forthcoming.

([dx.doi.org/10.1080/14783363.2015.1099427](https://doi.org/10.1080/14783363.2015.1099427))

2016

Alves, C., **V.M. Santos**, **P.P. Silva** (2016), "Analysis of market quality before and during short-selling bans", *Research in International Business and Finance*, 37, 252-268.

([dx.doi.org/10.1016/j.ribaf.2015.11.009](https://doi.org/10.1016/j.ribaf.2015.11.009))

**Cândido, C.**, **L.M.S. Coelho**, R. Peixinho (2016), "The financial impact of a withdrawn ISO 9001 Certificate", *International Journal of Operations & Production Management*, 36(1), 23-41.

([dx.doi.org/10.1108/IJOPM-11-2014-0540](https://doi.org/10.1108/IJOPM-11-2014-0540))

**Serrasqueiro, Z.**, P.M. Nunes (2016), "Determinants of Growth in Portuguese Small and Medium-Sized Hotels: Empirical Evidence Using Panel Data Models", *Tourism Economics*, 22(2), 375-396.

([dx.doi.org/10.5367/te.2014.0423](https://doi.org/10.5367/te.2014.0423))

**Serrasqueiro, Z.**, P.M. Nunes, **J.V. Silva** (2016), "The Influence of Age and Size on Family-Owned Firms' Financing Decisions: Empirical Evidence Using Panel Data", *Long Range Planning*, 49(6), 723-745.

([dx.doi.org/10.1016/j.lrp.2015.12.012](https://doi.org/10.1016/j.lrp.2015.12.012))

**Serrasqueiro, Z.**, P.M. Nunes, M.R. Armada (2016), "Capital Structure Decisions: Old Issues, New Insights From High-Tech SMEs", *The European Journal of Finance*, 22(1), 59-79.

([dx.doi.org/10.1080/1351847X.2014.946068](https://doi.org/10.1080/1351847X.2014.946068))

**Silva, P.P.**, **C. Vieira**, **I. Vieira** (2016), "The EU ban on uncovered sovereign credit default swaps: assessing impacts on liquidity, volatility and price discovery", *Journal of Derivatives*, 23 (4), 74-98.

([dx.doi.org/10.3905/jod.2016.23.4.074](https://doi.org/10.3905/jod.2016.23.4.074))

## i.2) Articles published in ISI journals (not indexed in CEFAGE ranking)

Forthcoming:

**Serrasqueiro, Z.**, "Investment determinants: high-investment versus low-investment Portuguese SMEs", *Investment Analysts Journal*, forthcoming.

([dx.doi.org/10.1080/10293523.2016.1246148](https://doi.org/10.1080/10293523.2016.1246148))

2016

**Silva, P.P.** (2016), "Common-wide information flow in CDS markets: The case of earnings surprises of industry leaders", *Investment Analysts Journal*, 45(2), 63-80.

([dx.doi.org/10.1080/10293523.2015.1125062](https://doi.org/10.1080/10293523.2015.1125062))

**Silva, P.P.** (2016), "Did investors seeking short exposure move to the CDS market after the 2011 short-sale bans in European financial stocks?", *Finance a Uver – Czech Journal of Economics and Finance*, 66(4), 322-353.

## i.3) Articles published in other peer-reviewed journals

Forthcoming:

**Coelho, L.M.S.**, "New restaurants and their intra-industry effects: Evidence from Portugal", *Tourism & Management Studies*, forthcoming.

**Novas, J.C.**, M.C. Alves, A. Sousa, "The Role of Management Accounting Systems in the Development of Intellectual Capital", *Journal of Intellectual Capital*, forthcoming.

Ramalho, E., J. Ramalho, L.M.S. Coelho, "Exponential regression of fractional-response fixed-effects models with an application to firm capital structure", *Journal of Econometric Methods*, forthcoming.

([dx.doi.org/10.1515/jem-2015-0019](https://doi.org/10.1515/jem-2015-0019))

2016

Andraz, J., C. Viegas, N. Norte (2016), "On the relationship between sovereign bonds and credit default swaps in Portugal", *International Journal of Economic Sciences*, 5(1), 18-36.

([dx.doi.org/10.20472/ES.2016.5.1.002](https://doi.org/10.20472/ES.2016.5.1.002))

Castelinho, C., R. Peixinho, L.M.S. Coelho (2016), "Sistemas de custeio aplicados à atividade agrícola: O caso Vitacress", *Revista Iberoamericana de Contabilidad de Gestión*, 27.

Jordão, R. (2016), "Práticas de gestão do conhecimento na internacionalização de pequenas empresas: um estudo comparativo de casos na indústria de café", *Base (São Leopoldo. Online)*, 13(2), 171-186.

([dx.doi.org/10.4013/base.2016.132.06](https://doi.org/10.4013/base.2016.132.06))

Serrasqueiro, Z., F. Matias, L. Salsa (2016), "Determinants of capital structure: New evidence from Portuguese small firms", *Dos Algarves: A Multidisciplinary e-Journal*, 28, 13-28.

([dx.doi.org/10.18089/DAMeJ.2016.28.1.2](https://doi.org/10.18089/DAMeJ.2016.28.1.2))

Silva, P.P. (2016), "Earnings surprises and the response of CDS markets", *Studies in Economics and Finance*, 33(3), 377-402.

([dx.doi.org/10.1108/SEF-11-2014-0217](https://doi.org/10.1108/SEF-11-2014-0217))

## ii) Articles and chapters published in scientific books

Forthcoming:

---

2016

Serrasqueiro, Z., S. Azevedo (2016), "The determinants of inventories investment: empirical evidence from SMEs", in A. Tavidze (eds), *Progress in Economics Research*, Vol. 30, New York: Nova Science Publishers, 117-128 (ISBN:978-1634637398).

## iii) Scientific, pedagogical and technical books

---

## 3.2.3. Editorial activities

### i) Edition of scientific books

---

### ii) Edition of journal issues

Editors: Chris Adcock, Rúben Peixinho, Luís M.S. Coelho

Issue Title: Special Issue of the Portuguese Finance 2014 Conference

Journal: *European Journal of Finance*

Volume: forthcoming

Year: 2017

### 3.2.4. Thesis supervision

#### i) Ph.D. supervisions concluded

Working Title: *A influência dos KIBS na inovação das empresas*  
Author: Alexandra M.S. Braga  
Supervisor(s): Carla Marques, **Zélia Serrasqueiro**  
Degree: Ph.D. (Management)  
Institution: Universidade da Beira Interior

#### ii) Ph.D. supervisions in progress

Working Title: *A Volatilidade e o Valor Económico do Market Timing nos Fundos de Investimento Portugueses*  
Author: Osvaldo M.C. Afonso  
Supervisor(s): Paulo Rodrigues, **Cristina Viegas**  
Degree: Ph.D. (Economic and Management Sciences)  
Institution: Universidade do Algarve

Working Title: *The relevance of Microcredit and Its Impact on Timor-Leste SMEs And Poverty Reduction.*  
Author: Teresa F. Belo  
Supervisor(s): **Elisabete Félix**  
Degree: Ph.D. (Management)  
Institution: Universidade de Évora

Working Title: *A Incorporação de Políticas de Empreendedorismo e de Gestão de Pessoas nas Estratégias Organizacionais como Factores para o Incremento da Produtividade*  
Author: Aquilino M.F. Costa  
Supervisor(s): **Elisabete Félix**  
Degree: Ph.D. (Management)  
Institution: Universidade de Évora

Working Title: *VC activity: Determinants and a Moral Hazard Model.*  
Author: José C.A.M. Nunes  
Supervisor(s): **Elisabete Félix**  
Degree: Ph.D. (Management)  
Institution: Universidade de Évora

Working Title: *Gestão da Informação e do Conhecimento em Redes: Um Estudo Empírico em Micro e Pequenas Empresas em Processos de Internacionalização*  
Author: Ricardo V. D. Jordão  
Supervisor(s): **Jorge Casas Novas**  
Degree: Ph.D. (Management)  
Institution: Universidade de Évora

Working Title: *Gestão Estratégica e Balanced Scorecard: Proposta de Referencial para o Setor Vitivinícola na Região Alentejo*  
Author: Maria José Gomes  
Supervisor(s): António Sousa, **Jorge Casas Novas**  
Degree: Ph.D. (Management)  
Institution: Universidade de Évora

Working Title: *Variáveis determinantes na criação de um link total entre brand e consumidor*  
Author: Sofia S.E.B. Costa  
Supervisor(s): **M. Raquel Lucas, Andreia Basílio**  
Degree: Ph.D. (Management)  
Institution: Universidade de Évora

Working Title: *The impact of financing decisions of intellectual capital on firms' financial performance and on the gap between firm's book value and market value*

Author: Filipe M.A. Sardo

Supervisor(s): **Zélia Serrasqueiro**

Degree: Ph.D. (Management)

Institution: Universidade da Beira Interior

Working Title: *Estrutura de Capitais e Política Financeira das Organizações sem Fins Lucrativos - estudo de caso das Misericórdias Portuguesas*

Author: Márcio J.S.P. Oliveira

Supervisor(s): **Zélia Serrasqueiro**

Degree: Ph.D. (Management)

Institution: Universidade da Beira Interior

Working Title: *Ensaio sobre o Crowdfunding em Portugal: sistema de financiamento?*

Author: Bruno M.P. Torres

Supervisor(s): **Zélia Serrasqueiro**

Degree: Ph.D. (Management)

Institution: Universidade da Beira Interior

### iii) M.Sc. supervisions concluded

Working Title: *Business Angels: a forma como o empresário, o investidor e a empresa influenciam o montante investido*

Author: Alexandre J.B. Cruz

Supervisor(s): **Elisabete Félix**

Degree: M.Sc. (Management)

Institution: Universidade de Évora

Working Title: *Estudo dos Determinantes do Crescimento das Empresas Familiares Portuguesas*

Author: Núria J.M. Castanho

Supervisor(s): **Elisabete Félix**

Degree: M.Sc. (Management)

Institution: Universidade de Évora

Working Title: *Contabilidade ambiental: Gastos ambientais em empresas certificadas pela ISO 14001 em Portugal*

Author: Marina I.D.G. Bonito

Supervisor(s): **Jorge Casas Novas**, Teresa Eugénio

Degree: M.Sc. (Accounting and Finance)

Institution: Instituto Politécnico de Santarém

Working Title: *Estudo Económico-financeiro Aplicado a um Projeto para um Cartão de Fidelização de uma Cidade*

Author: Miguel Â. P. Nicolau

Supervisor(s): **Luis M.S. Coelho**

Degree: M.Sc. (Finance)

Institution: Universidade do Algarve

Working Title: *The impact of Business and Clinical Intelligence Project HVITAL: A Case Study in the São João Hospital Centre, EPE*

Author: Sara F.S. Luz

Supervisor(s): **Luis M.S. Coelho**, Adão Flores

Degree: M.Sc. (Health Care Services Management)

Institution: Universidade do Algarve

Working Title: *Modelo de Previsão de Falência: O Caso da Construção Civil em Portugal*

Author: Hélder M.A.A.C. Santos

Supervisor(s): **Luis M.S. Coelho**, Ruben Peixinho

Degree: M.Sc. (Finance)

Institution: Universidade do Algarve

Working Title: *Gambling nos Mercados Financeiros: Uma Revisão Sistemática da Literatura*  
Author: Micaela V.J. Emídio  
Supervisor(s): **Luis M.S. Coelho**, Ruben Peixinho  
Degree: M.Sc. (Finance)  
Institution: Universidade do Algarve

### 3.2.5. Funded research projects

#### i) Projects funded by national science agencies

---

#### ii) Projects funded by international research programs

---

#### iii) Projects funded by international industry-related programs

---

#### iv) Projects funded by national industry-related programs

---

### 3.2.6. Presentations at conferences and seminars

#### i) Presentations at international conferences

**Andraz, J., C. Viegas**, N. Norte, "Long term relationship between credit default swaps premiums and sovereign bonds spreads in the aftermath of the financial crisis", *1<sup>st</sup> SWUFE – Exeter Joint Research Workshop*, Chengdu, China, 27-28/06/2016.

**Cândido, C., L.M.S. Coelho**, R.M.T. Peixinho, "ISO 9001 Financial Impact and ISO 9001 Withdrawal", *ICQEM 2016 – 2<sup>nd</sup> International Conference on Quality Engineering and Management*, Universidade do Minho, Guimarães, Portugal, 13-15/07/ 2016.

**Coelho, L.M.S.**, "Business-Bankruptcy after the BAPCPA: Evidence from the Stock Market", *1<sup>st</sup> SWUFE – Exeter Joint Research Workshop*, Chengdu, China, 27-28/06/2016.

**Félix, E.**, J.A.K. Santos, "The success factors for SMEs: Empirical evidence from Portuguese SMEs", *7th International Research Meeting in Business and Management*, Nice Campus, France, 11-12/07/2016.

Felizardo, A., **E. Félix**, J.P.C.F. Thomaz, "Organizational performance measurement and evaluation systems in smes: The case of the transforming industry in portugal", *7th International Research Meeting in Business and Management*, Nice Campus, France, 11-12/07/2016.

Felizardo, A., **E. Félix**, J.P.C.F. Thomaz, "Organizational performance measurement and evaluation systems in smes: The case of the transforming industry in portugal", *10th Conference of the Performance Measurement Association*, PMA 2016, Edinburgh, Scotland, 26-29/06/2016.

Pereira, C., **J. Ramalho, J.V. Silva**, "The main determinants of banking crises in OECD countries", *World Finance Conference 2016*, New York, USA, 29-31/07/2016.

## **ii) Presentations at iberian or portuguese-spoken conferences**

Bonito, M., **J.C. Novas**, T. Eugénio, “Contabilidade ambiental - gastos ambientais em empresas certificadas pela ISSO 14001 em Portugal”, *VIIth GECAMB – Portuguese CSEAR (Centre for Social and Environmental Accounting Research) Conference*, Barcelos, Portugal, 3-4/11/2016.

Leote, F., **J.V. Silva**, “Relevância dos ativos intangíveis e a adoção das ifrs: o caso das empresas da Euronext”, *XVIII Seminário Luso-Espanhol de Economia* 2016, Salamanca, Spain, 10-11/11/2016.

## **iii) Seminars presented at other institutions**

---

## 3.3. Industrial Economics and Business Strategy

### 3.3.1. Team members



**António José Mendes Ferreira**

UNIVERSIDADE DA BEIRA INTERIOR

Ph.D. (Management), U. Beira Interior, 2016

M.Sc. (Management), U. Beira Interior, 2012

B.A. (Business Management), I.P. Beja, 2008

Research interests: *Strategic Alliances; Intellectual Capital; Entrepreneurship; Performance Evaluation.*



**Carlos Joaquim Farias Cândido**

UNIVERSIDADE DO ALGARVE

Ph.D. (Management), Sheffield Hallam University, 2001

M.Sc. (Management), ISCTE, 1996

B.A. (Management), U. Algarve, 1992

Research interests: *Strategy formulation and implementation; Quality management; Quality and certification; TQM and ISO 9000 implementation.*



**Cesaltina Maria Pacheco Pires**

UNIVERSIDADE DE ÉVORA

Ph.D. (Economics), M.I.T., 1994

M.B.A., INSEAD, 1989

B.A. (Economics), U. Nova, 1985

Research interests: *Industrial Organization; Decision Theory; Game Theory.*



**Cristina Isabel Galamba Oliveira Costa Marreiros**

UNIVERSIDADE DE ÉVORA

Ph.D. (Marketing), U. Newcastle-upon-Tyne, 2006

M.Sc. (Agricultural Economics), U. Évora, 1997

B.A. (Zootechnic Engineering), U. Évora, 1992

Research interests: *Consumer Behaviour; Agrofood Marketing; Services Marketing.*



**Duarte Brito**

UNIVERSIDADE NOVA DE LISBOA

Ph.D. (Economics), U. Nova de Lisboa, 2001

B.A. (Economics), U. Nova de Lisboa, 1993

Research interests: *Industrial Organization.*

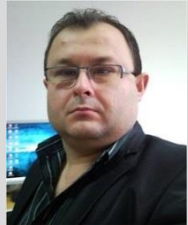




**João Miguel Bastos Vareda**  
AUTORIDADE DA CONCORRÊNCIA

Ph.D. (Economics), U. Nova de Lisboa, 2008  
B.A. (Economics), U. Nova de Lisboa, 2002

Research interests: *Microeconomics; Industrial Economics; Regulation Economics and Competition Policy; Telecommunications Economics; Energy Economics.*



**Luís António Fonseca Mendes**  
UNIVERSIDADE DA BEIRA INTERIOR

Ph.D.(Management), U. Beira Interior, 2005  
M.Sc. (Management), U. Beira Interior, 1996  
B.A. (Management), U. Beira Interior, 1991

Research interests: *Flexibility in Manufacturing Systems; Organizational Learning and Quality Improvement..*



**Luísa Margarida Cagica Carvalho**  
UNIVERSIDADE ABERTA

Ph.D. (Management), U. Évora, 2008  
M.Sc. (Social Economics and Policy), ISEG/UTL, 1998  
B.A. (Economics), U. Lusíada de Lisboa, 1994

Research interests: *Entrepreneurship; Innovation; Service Sector.*



**Maria Raquel David Pereira Ventura Lucas**  
UNIVERSIDADE DE ÉVORA

Ph.D. (Business Management), U. Évora, 1995  
B.A. (Zootechnic Engineering), U. Évora, 1986

Research interests: *Agri-Food Marketing; Agri-Food Quality; Consumer Behaviour.*



**Mario José Batista Franco**  
UNIVERSIDADE DA BEIRA INTERIOR

Ph.D.(Management), U. Beira Interior, 2002  
M.Sc. (Management), U. Beira Interior, 1996  
B.A. (Management), U. Beira Interior, 1991

Research interests: *SME Management; Co-operation between Firms; Strategic Alliances; Entrepreneurship; Inter-organizational and Business Networks, Innovation; Organizational Learning; Leadership.*



**Markos Tselekounis**  
UNIVERSIDADE NOVA DE LISBOA

Ph.D. (Economics and Regulation of Telecommunications), U. Athens, 2013  
M.Sc. (Economics and Management of Telecommunication Networks), U. Athens, 2008  
B.A. (Economics), U. Piraeus, 2006

Research interests: *Industrial Organization; Regulation in Network Industries; Telecommunications Economics.*



**Pedro Pereira**

AUTORIDADE DA CONCORRÊNCIA

Ph.D. (Economics), U. California, 1997  
M.Sc. (Economics), U. California, 1995  
B.A. (Economics), U. Nova de Lisboa, 1988

Research interests: *Industrial Organization; Information and Uncertainty; Consumer Search.*



**Rui Filipe Cerqueira Quaresma**

UNIVERSIDADE DE ÉVORA

Ph.D. (Management), U. Sevilla, 2005  
M.Sc. (Industrial Management and Strategy), ISEG/UTL, 1997  
B.A. (Business Management), U. Évora, 1993

Research interests: *Information Systems; Internet; E-Government and E-Business.*



**Soumodip Sarkar**

UNIVERSIDADE DE ÉVORA

Ph.D. (Economics), U. Northeastern, 1995  
M.Sc. (Economics), U. Northeastern, 1991  
B.A. (Economics), U. Calcutá, 1988

Research interests: *Entrepreneurship; Innovation; International Management.*



**Susana Maria Palavra Garrido Azevedo**

UNIVERSIDADE DA BEIRA INTERIOR

Ph.D.(Management), U. Beira Interior, 2002  
M.Sc. (Management), U. Beira Interior, 1996  
B.A. (Management), U. Beira Interior, 1991

Research interests: *Corporate sustainability; Supply Chain Management; LARG SCM; Performance Measurement Systems.*



**Vanessa de Sousa Duarte**

UNIVERSIDADE DE ÉVORA

Ph.D. (Management), U. Évora, 2016  
M.Sc. (Mediterranean Agriculture), U. Évora, 2009  
B.A. (Agricultural Engineering), UTL, 2002

Research interests: *Economics of the Household; Innovation; Firm Objectives, Organization, and Behavior; Technological Change; Research and Development.*

### 3.3.2. Publications

#### i) Articles published in scientific peer-review journals

##### i.1) Articles published in selected journals (indexed in CEFAGE ranking)

Forthcoming:

Andrade, J., **L. Mendes**, L. Lourenço (2017), "Perceived psychological empowerment and TQM-based Quality management systems: an exploratory research", *Total Quality Management & Business Excellence*, 28(1-2), 76-87.

([dx.doi.org/10.1080/14783363.2015.1050166](https://doi.org/10.1080/14783363.2015.1050166))

**Brito, D., M. Tselekounis** (2017), "On the Impact of Input Prices on an Entrant's Profit Under Multi-Product Competition", *Review of Industrial Organization*, 50(1), 105-125.

([dx.doi.org/10.1007/s11151-016-9531-2](https://doi.org/10.1007/s11151-016-9531-2))

Calisto, M.L., **S. Sarkar**, "Organizations as biomes of entrepreneurial life: Towards a clarification of the corporate entrepreneurship process ", *Journal of Business Research*, forthcoming.

([dx.doi.org/10.1016/j.jbusres.2016.07.007](https://doi.org/10.1016/j.jbusres.2016.07.007))

**Ferreira, A., M. Franco**, "The Mediating Effect of Intellectual Capital in the Relationship Between Strategic Alliances and Organizational Performance in Portuguese Technology-Based SMEs", *European Management Review*, forthcoming.

([dx.doi.org/10.1111/emre.12107](https://doi.org/10.1111/emre.12107))

**Franco, M.**, H. Haase, "Collective Entrepreneurship: Employees' Perceptions of the Influence of Leadership Styles", *Journal of Management & Organization*, forthcoming.

([dx.doi.org/10.1017/jmo.2016.3](https://doi.org/10.1017/jmo.2016.3))

Jorge, M., M. Couto, T. Veloso, **M. Franco** (2017), "When Family Businesses Go International: Management Sets the Path", *Journal of Business Strategy*, 38(1), 31-38.

([dx.doi.org/10.1108/JBS-01-2016-0006](https://doi.org/10.1108/JBS-01-2016-0006))

**Mendes, L.**, J. Jesus, "Influence of total quality-based human issues on organisational commitment", *Total Quality Management and Business Excellence*, forthcoming.

([dx.doi.org/10.1080/14783363.2016.1180953](https://doi.org/10.1080/14783363.2016.1180953))

Neves, M., **M. Franco**, "Academic Spin-off Creation: Barriers and How to Overcome them", *R&D Management*, forthcoming.

([dx.doi.org/10.1111/radm.12231](https://doi.org/10.1111/radm.12231))

**Sarkar, S.**, M. Pansera (2017), "Sustainability-driven innovation at the bottom: Insights from grassroots ecopreneurs", *Technological Forecasting and Social Change*, 114, 327-338.

([dx.doi.org/10.1016/j.techfore.2016.08.029](https://doi.org/10.1016/j.techfore.2016.08.029))

2016

**Brito, D., M. Tselekounis** (2016), "Access regulation and the entrant's mode of entry under multi-product competition in telecoms", *Information Economics and Policy*, 37, 20-33.

([dx.doi.org/10.1016/j.infoecopol.2016.10.005](https://doi.org/10.1016/j.infoecopol.2016.10.005))

**Brito, D., P. Pereira, J. Vareda** (2016), "Can more information about rivals' costs decrease welfare?", *The Manchester School*, 84(2), 251-269.

([dx.doi.org/10.1111/manc.12096](https://doi.org/10.1111/manc.12096))

**Brito, D., P. Pereira, J. Vareda** (2016), "Impact of the Information Asymmetry Between Managers and Owners Under Oligopoly", *Southern Economic Journal*, 82(4), 1311-1326.

([dx.doi.org/10.1002/soej.12121](https://doi.org/10.1002/soej.12121))

**Cândido, C., L.M.S. Coelho**, R.M.T. Peixinho (2016), "The financial impact of a withdrawn ISO 9001 Certificate", *International Journal of Operations & Production Management*, 36(1), 23-41.

([dx.doi.org/10.1108/IJOPM-11-2014-0540](https://doi.org/10.1108/IJOPM-11-2014-0540))

Pedro, E., **M. Franco** (2016), "The Importance of Networks in the Transnational Mobility of Higher Education Students: Attraction and Satisfaction of Foreign Mobility Students in a Public University", *Studies in Higher Education*, 41(9), 1627-1655.

([dx.doi.org/10.1080/03075079.2014.999321](https://doi.org/10.1080/03075079.2014.999321))

Silva, J., **M. Franco**, A. Magrinho (2016), "An Empirical Investigation of the Effects of Industry Type and Firm Size on Export Barriers", *Journal of Business Economics and Management*, 17(6), 1052-1065.

([dx.doi.org/10.3846/16111699.2016.1143874](https://doi.org/10.3846/16111699.2016.1143874))

Valentim, L., J. Lisboa, **M. Franco** (2016), "Knowledge Management Practices and Absorptive Capacity in SMEs: Is There Really a Linkage?", *R&D Management*, 46(4), 711-725.

([dx.doi.org/10.1111/radm.12108](https://doi.org/10.1111/radm.12108))

## i.2) Articles published in ISI journals (not indexed in CEFAGE ranking)

### Forthcoming:

Carvalho, H., K. Govindan, **S. Azevedo**, V. Cruz-Machado, "Modelling Green and Lean Supply Chain: An Eco-Efficiency Perspective", *Resources, Conservation and Recycling*, forthcoming.

([dx.doi.org/10.1016/j.resconrec.2016.09.025](https://doi.org/10.1016/j.resconrec.2016.09.025))

**Franco, M.**, J. Pinto, "Intrapreneurship practices in municipal archives: A practice-oriented study", *Journal of Librarianship and Information Science*, forthcoming.

([dx.doi.org/10.1177/0961000616632055](https://doi.org/10.1177/0961000616632055))

**Franco, M.**, M. Prata, "Influence of the Individual Characteristics and Personality Traits of the Founder on the Performance of Family SMEs", *European Journal of International Management*, forthcoming.

Pinho, C., **M. Franco**, "The Role of the CIO in Strategy for Innovative Information Technology in Higher Education Institutions", *Higher Education Policy*, forthcoming.

([dx.doi.org/10.1057/s41307-016-0028-2](https://doi.org/10.1057/s41307-016-0028-2))

**Sarkar, S.**, "Uncorking knowledge-purposeful spillovers as a strategic tool for capability enhancement in the cork industry" *International Entrepreneurship and Management Journal*, forthcoming.

([dx.doi.org/10.1007/s11365-016-0395-6](https://doi.org/10.1007/s11365-016-0395-6))

### 2016

Antunes, A., **M. Franco** (2016), "How People in Organizations make sense of Responsible Leadership Practices: Multiple Case Studies", *Leadership & Organization Development Journal*, 37(1), 126-152.

([dx.doi.org/10.1108/LODJ-04-2014-0084](https://doi.org/10.1108/LODJ-04-2014-0084))

**Franco, M.**, H. Haase (2016), "Internationalisation of Born Globals: The Role of Strategic Alliances", *European Journal of International Management*, 10(2), 181-201.

([dx.doi.org/10.1504/EJIM.2016.074471](https://doi.org/10.1504/EJIM.2016.074471))

Govindan, K., S. Seuring, Q. Zhu, **S. Azevedo** (2016), "Accelerating the transition towards sustainability dynamics into supply chain relationship management and governance structures", *Journal of Cleaner Production*, 112, 1813-1823.

([dx.doi.org/10.1016/j.jclepro.2015.11.084](https://doi.org/10.1016/j.jclepro.2015.11.084))

Haase, H., **M. Franco** (2016), "What factors drive performance of small and medium-sized enterprises?", *European Journal of International Management*, 10(6), 678-697.

([dx.doi.org/10.1504/EJIM.2016.10000371](https://doi.org/10.1504/EJIM.2016.10000371))

Pansera, P., **S. Sarkar** (2016), "Crafting Sustainable Development Solutions: Frugal Innovations of Grassroots Entrepreneurs", *Sustainability*, 8(1), 51.

([dx.doi.org/10.3390/su8010051](https://doi.org/10.3390/su8010051))

**Sarkar, S.**, C. Searcy (2016), "Zeitgeist or chameleon? A quantitative analysis of CSR definitions" *Journal of Cleaner Production*, 135, 1423-1435.

([dx.doi.org/10.1016/j.jclepro.2016.06.157](https://doi.org/10.1016/j.jclepro.2016.06.157))

Veiga, P., **L. Mendes**, L. Lourenço (2016), "A retrospective view of statistical quality control research and identification of emerging trends: a bibliometric analysis", *Quality & Quantity*, 50(2), 673-692.

([dx.doi.org/10.1007/s11135-015-0170-8](https://doi.org/10.1007/s11135-015-0170-8))

### i.3) Articles published in other peer-reviewed journals

#### Forthcoming:

Araujo, D., **M. Franco**, "Trust-Building Mechanisms in a Coopetition Relationship: A Case Study Design", *International Journal of Organizational Analysis*, forthcoming.

**Azevedo, S.**, H. Carvalho, L. Ferreira, J.C.O. Matias, "A proposed framework to assess upstream supply chain sustainability", *Environment, Development and Sustainability*, forthcoming.

([dx.doi.org/10.1007/s10668-016-9853-0](https://doi.org/10.1007/s10668-016-9853-0))

**Azevedo, S.**, M. Barros, "The application of the triple bottom line approach to sustainability assessment: the case study of the uk automotive supply chain", *Journal of Industrial Engineering and Management*, forthcoming.

Calais, J., **S. Azevedo**, J. Matias, J. Catalao, "Management and operations maintenance for a water treatment and supply company", *International Journal of Industrial and Systems Engineering*, forthcoming.

Camfield, C., **L. Mendes**, "Princípios de excelência nas pmes brasileiras do setor ervateiro: análise baseada no modelo de excelência em gestão", *Revista GEPROS – Gestão da produção, operações e sistemas*, forthcoming.

Discacciati, J., **L. Mendes**, "How service quality and organizational image influence international students' satisfaction in higher education institutions", *Revista TMQ - Techniques, Methodologies and Quality*, forthcoming.

**Duarte, V.**, M. R. Sousa, "Don't do land reform: a simple theorem", *International Journal of Latest Trends in Economics and Financial Sciences*, forthcoming.

Figueiredo, V., **M. Franco** (2017), "Cooperative Unions as Strategic Alliances: Factors that influence the successful managing of a cooperative from a relational perspective", *World Review of Entrepreneurship, Management and Sustainable Development*, 13(1), 27-51.

([dx.doi.org/10.1504/WREMSD.2017.080740](https://doi.org/10.1504/WREMSD.2017.080740))

**Franco, M.**, H. Haase, "Success Factors in University Sport Partnerships: A Case Study", *EuroMed Journal of Business*, forthcoming.

**Franco, M.**, H. Haase, S. Correia, "Exploring Factors in the Success of Creative Incubators: a Cultural Entrepreneurship Perspective", *Journal of the Knowledge Economy*, forthcoming.

([dx.doi.org/10.1007/s13132-015-0338-4](https://doi.org/10.1007/s13132-015-0338-4))

**Franco, M.**, L. Pais, "Exploring the Advantages of Using Social Network Sites (SNSs) in Dental Medicine Organizations", *International Journal of Health Care Quality Assurance*, forthcoming.

Lopes, J., **M. Franco**, "Review about Regional Development Networks: An Ecosystem Model Proposal", *Journal of the Knowledge Economy*, forthcoming.

Paulo, A., **L. Carvalho**, T. Costa, J. Lopes, S. Galina, "Mapping Open Innovation: A bibliometric review to compare developed and emerging countries", *Global Business Review*, forthcoming.

Quaresma, N., **L. Mendes**, L. Lourenço, "Aplicação do modelo EFQM ao sector da saúde", *Revista TMQ - Techniques, Methodologies and Quality*, forthcoming.

**Azevedo, S.**, H. Carvalho, V.C. Machado (2016), "LARG index: A benchmarking tool for improving the leanness, agility, resilience and greenness of the automotive supply chain", *Benchmarking: an international Journal*, 23(6), 1472-1499.

([dx.doi.org/10.1108/BIJ-07-2014-0072](https://doi.org/10.1108/BIJ-07-2014-0072))

Bilau, J., **S. Sarkar** (2016), "Financing innovative start-ups in Portuguese context: what is the role of business angels networks?", *Journal of the Knowledge Economy*, 7(4), 920-934.

([dx.doi.org/10.1007/s13132-015-0304-1](https://doi.org/10.1007/s13132-015-0304-1))

**Carvalho, L.** (2016), "Compreender o que se entende por ecossistema empreendedor: Lisboa como uma cidade start up", *Revista Lusófona de Economia e Gestão das Organizações*, 3, 17-31.

**Carvalho, L.**, A. Viana Noronha, D. Mantovani (2016), "O papel da FAPESP no ecossistema empreendedor do Estado de São Paulo", *Revista de Administração, Contabilidade e Economia da FUNDACE*, 7(1), 84-101.

([dx.doi.org/10.13059/racef.v7i1.168](https://doi.org/10.13059/racef.v7i1.168))

**Carvalho, L.**, B. Cibrão (2016), "Percepção dos estudantes de classes virtuais sobre a utilização do digital storytelling no ensino do empreendedorismo", *Revista de Empreendedorismo e Gestão de MPE*, 1(6), 43-65.

Cruz, R.S.W., **M.R. Lucas**, M.L. Carvalho (2016) "Análise da margem e dos factores que afectam a comercialização do arroz no distrito de Bobonaro, sub-distrito de Maliana", *Revista Veritas*, 4(2), 47-46.

Dahu, S., M.L.S. Carvalho, **M.R. Lucas** (2016), "Produção e comercialização do feijão mungo no suco de Leolima, sub-distrito Balibo, distrito de Bobonaro", *Revista Veritas*, 4(2), 27-46.

**Ferreira, A.**, **M. Franco** (2016), "Strategic Alliances, Intellectual Capital and Organizational Performance in Technology-based SMEs: is there really a connection?", *International Journal of Business and Globalisation*, 18(1), 130-151.

([dx.doi.org/10.1504/IJBG.2017.081024](https://doi.org/10.1504/IJBG.2017.081024))

Ferreira, L., C. Silva, **S. Azevedo** (2016), "An Environmental Balanced Scorecard for Supply Chain Performance Measurement (Env\_BSC\_4\_SCPM)", *Benchmarking: An International Journal*, 23(6), 23-44.

([dx.doi.org/10.1108/BIJ-08-2013-0087](https://doi.org/10.1108/BIJ-08-2013-0087))

**Franco, M.**, H. Haase, A. Pereira (2016), "Empirical Study about the Role of Social Networks in SME Performance", *Journal of Systems and Information Technology*, 18(4), 383-403.

([dx.doi.org/10.1108/JSIT-06-2016-0036](https://doi.org/10.1108/JSIT-06-2016-0036))

**Franco, M.**, M. Lucas (2016), "Family management of SMEs: an organisational culture perspective", *International Journal of Globalisation and Small Business*, 8(1), 18-38.

([dx.doi.org/10.1504/IJGSB.2016.076442](https://doi.org/10.1504/IJGSB.2016.076442))

Galina, S., **L. Carvalho**, T. Costa (2016), "Innovation Management of internationalized IT companies in Brazil and Portugal", *International Journal of Knowledge-Based Development*, 7(4), 317-335.

([dx.doi.org/10.1504/IJKBD.2016.10001781](https://doi.org/10.1504/IJKBD.2016.10001781))

Godiva, R., J.C.O. Matias, **S. Azevedo** (2016), "Quality Improvement with Statistical Process Control in the Automotive Industry", *International Journal of Industrial Engineering and Management (IJIEM)*, 7(1), 1-8.

Jesus, C., **M. Franco** (2016), "Cooperation networks in tourism: A study of hotels and rural tourism establishments in an inland region of Portugal", *Journal of Hospitality and Tourism Management*, 29, 165-175.

([dx.doi.org/10.1016/j.jhtm.2016.07.005](https://doi.org/10.1016/j.jhtm.2016.07.005))

**Pereira, P.**, T. Ribeiro (2016), "Quantitative Assessment: Are the Tools Currently Used Adequate to Assess Mergers in all Industries?", *Journal of European Competition Law and Practice*, 7(1), 52-55.

([dx.doi.org/10.1093/jeclap/lpv081](https://doi.org/10.1093/jeclap/lpv081))



Pimenta, A., **R. Quaresma** (2016), “A Segurança dos Sistemas de Informação e o Comportamentos dos Utilizadores”, *Journal of Information Systems and Technology Management*, 13(3), 533-552.

Rodrigues, I.P., **R. Quaresma**, D. Diaz, S. Abreu (2016), “Constraint-Informed Information Systems in Space Management Utilization”, *Coimbra Business Review*, 2(1), 17-27.

Santos, A.H.M., **C. Cândido** (2016), “Avaliação da qualidade dos serviços bancários online – Proposta de integração dos modelos SERVQUAL, Kano e QFD”, *Tourism & Management Studies*, 12(2), 145-153.

[dx.doi.org/10.18089/tms.2016.12216](https://doi.org/10.18089/tms.2016.12216)

**Sarkar, S.**, D.M. Coelho, J. Maroco (2016), “Strategic Orientations, Dynamic Capabilities, and Firm Performance: an Analysis for Knowledge Intensive Business Services”, *Journal of the Knowledge Economy*, 7(4), 1000-1020.

Varela, C., **M.R. Lucas**, V. Cruz, E.M.V. Bettencourt, (2016), “Análise do custo de abate e comercialização de carne de vaca em Timor-Leste”, *Revista Veritas*, 4(2), 7-25.

Williams, B., **L. Carvalho** (2016), “Aplicação de uma abordagem de estudo de caso ao ensino e aprendizagem do empreendedorismo através de estudos das PME portuguesas Pelcor e Ydreams”, *Revista de Empreendedorismo e Gestão de MPE*, 1(6), 34-42.

## ii) Articles and chapters published in scientific books

Forthcoming:

Brites-Pereira, L., A.M.P. Melo, **V. Duarte**, M.R. Sousa, “South Africa – Apartheid, Globalization and Agriculture” in Z. Navarro, A. M. Buainain, M. R. Sousa (eds), *International Perspectives on Globalization and Agriculture*, Lanham, MD: Lexington, forthcoming.

**Carvalho, L.**, (2017), “Entrepreneurial Ecosystems. Lisbon as a Smart Start-up City” in L. Carvalho (eds), *Handbook of Research on Entrepreneurial Development and Innovation Within Smart Cities*, Pennsylvania, USA: IGI Global, pp. 1-24 (ISBN: 9781522519782).

[dx.doi.org/10.4018/978-1-5225-1978-2.ch001](https://doi.org/10.4018/978-1-5225-1978-2.ch001)

**Ferreira, A., L. Mendes**, L. Lourenço, “Understanding the influence of ISO 9001 certification on SMEs performance: two Portuguese case studies” in A.K. Panda (eds), *Society, Business and Strategies: Multi-disciplinary Approaches*, UK: Palgrave McMillan, forthcoming.

Ferreira, L., C. Silva., **S. Azevedo**, “Proposal of a framework for assessing environmental performance of supply chains” in M. Amorim, C. Ferreira, M. Vieira, C. Prado (eds), *Engineering Systems and Networks: The Way Ahead for Industrial Engineering and Operations Management*, Berlin: Springer International Publishing, forthcoming.

**Franco, M.**, H., Haase, A. Reis (2017) “Determinants of university cooperation networks as a mechanism for regional development: The case of Beira Interior (Portugal)” in M. Peris-Ortiz, J. Ferreira (eds), *Cooperative and Networking Strategies in Small Business*, Switzerland: Springer International Publishing, Cap. 3, pp. 31-47, (ISBN: 978-3-319-44508-3).

[dx.doi.org/10.1007/978-3-319-44509-0\\_3](https://doi.org/10.1007/978-3-319-44509-0_3)

**Lucas, M.R., M.C. Rego, C. Vieira, I. Vieira** (2017), “Proximity and cooperation for innovative regional development: The case of the Science and Technology Park of Alentejo”, in L. Carvalho (eds) *Handbook of Research on Entrepreneurial Development and Innovation within Smart Cities*, Hershey, PA: IGI Global, pp. 208-238. (ISBN: 9781522519782).

[dx.doi.org/10.4018/978-1-5225-1978-2](https://doi.org/10.4018/978-1-5225-1978-2)

Pinto, L., C. Pimentel, **S. Azevedo**, J.C.O. Matias, “Lean production preparatory tools for a successful implementation of just-in-time”, in A.G. Matani (eds), *Industrial Engineering & Management Practices*, New Delhi (India): International Research Publication House (IRPH).

**Azevedo, S.**, M. Barros (2016), "The application of the triple bottom line approach to sustainability assessment: the case study of the uk automotive supply chain" in Y. Kabalci, J.M. Bergada, S.H.R. Hajiagha (eds), *Book Series: AER-Advances in Engineering Research*, France: Atlantis Press, Vol.51, pp. 121-124.

**Carvalho, L.**, A.B. Viana (2016), "Ambiente Virtual de Aprendizagem e Ação Docente no Ensino de Gestão: um Estudo Empírico Baseado nas Percepções dos Estudantes da Universidade Aberta" in P. Dias, D. Moreira, A. Quintas-Mendes (Eds), *Práticas e Cenários De Inovação Em Educação Online. Coleção Educação A Distância, nº 1*, Lisboa: Universidade Aberta, pp. 344-400 (ISBN: 978-972-674-786-4).

**Carvalho, L.**, B. Williams (2016), "A Perfect Couple: The Winery and Rural Tourism", in D. Vrontis, S. Bresciani, M. Rossi (Eds), *Managing Globalization, New Business Models, Strategies and Innovation*, Newcastle upon Tyne: Cambridge Scholars Publishing, pp. 77-91 (ISBN: 978-1-4438-8897-4).

Correia, E.M.F., **S. Azevedo**, H. Carvalho (2016), "Proposal of a Maturity Model for Supply Chain Sustainability", in Y. Kabalci, J.M. Bergada, S.H.R. Hajiagha (eds.), *Book Series: AER-Advances in Engineering Research*, France: Atlantis Press, Vol.51, pp. 161- 164.

Dias, D., **M. Franco** (2016), "Serão os Sistemas Produtivos e Inovadores Locais (SPIs) um Paradigma de Rede? Estudo de caso sobre as Aldeias Históricas de Portugal", in F.A. Almeida, A.M. Silva, C. Freitas (Orgs.), *Administração em Tempo de Mudança - Ensaios Científicos, Cap. 5*, Universidade do Porto, Faculdade de Letras, pp. 109-134 (ISBN: 978-989-8648-62-4).

Esteves, R.B., **S. Azevedo**, F.P. Brójo (2016), "Application of Lean Methodologies in a Neurosurgery High Dependency Unit", in K. Jian (eds), *Operations Research*, Croatia: Intech Publisher, pp. 33-53 (ISBN 978-953-51-4954-5).

([dx.doi.org/10.5772/64715](https://doi.org/10.5772/64715))

Ferreira, T., A. Baptista, **S. Azevedo**, F.C. Santos (2016), "Lean Manufacturing Implementation in Intermittent Environments: A Framework" in Sio-long Ao Gi-Chul Yang Len Gelman (eds), *Transactions on Engineering Technology*, Switzerland: Springer International Publishing, pp. 237- 248 (ISBN: 978-981-10-1087-3).

([dx.doi.org/10.1007/978-981-10-1088-0](https://doi.org/10.1007/978-981-10-1088-0))

**Rego, M.C., M.R. Lucas, I. Vieira, C. Vieira** (2016), "The Promotion of Entrepreneurship in Low Density Regions: The Case of the Agency for the Regional Development of Alentejo (ADRAL)", in L. Carvalho (eds), *Handbook of Research on Entrepreneurial Success and its Impact on Regional Development*, Pennsylvania, USA: IGI Global, pp. 223-245 (ISBN 978-1-466-69567-2).

Santos, B., **S. Azevedo**, J.C. Matias (2016), "The relation between corporate sustainability and circular economy" in S. Azevedo, J. Matias (eds), *Corporate Sustainability: The New Pillar of the Circular Economy, Chapter 1*, New York: Nova Publishers, pp. 1-15 (ISBN: 978-1-53610-730-2).

**Serrasqueiro, Z., S. Azevedo** (2016), "The determinants of inventories investment: empirical evidence from SMEs" in A. Tavidze (eds), *Progress in Economics Research, Vol. 30*, New York: Nova Science Publishers, pp. 117-128, (ISBN:978-1634637398).

### iii) Scientific, pedagogical and technical books

Forthcoming:

**Sarkar, S.**, "EntreSutre", Bloomsbury Publishers, forthcoming.

**Azevedo, S.**, J.C.O. Matias (2016), "Corporate Sustainability: The New Pillar of the Circular Economy", New York: Nova Publishers, (ISBN: 978-1-53610-730-2).



### 3.3.3. Editorial activities

#### i) Edition of scientific books

Forthcoming:

Carvalho, L.C., **M.C. Rego, M.R. Lucas**, M. I. Sánchez-Hernández, A. Noronha, "Entrepreneurship and Structural Change in Dynamic Territories – Contributions from Developed and Developing Countries", Switzerland: Springer International Publishing, forthcoming.

**Carvalho L.**, "Handbook of Research on Entrepreneurial Development and Innovation Within Smart Cities", Pennsylvania, USA: IGI Global (ISBN: 9781522519782), forthcoming.

**Sarkar, S.**, S. Patnaik, I. Sennikova, "Creative and Cultural Industries and Entrepreneurship", Switzerland: Springer International Publishing, forthcoming.

2016

**Carvalho, L.** (2016), "Handbook of Research on Entrepreneurial Success and its Impact on Regional Development", Pennsylvania, USA: IGI Global (ISBN 978-1-466-69567-2).

**Franco, M.**, "Entrepreneurship - Practice-Oriented Perspectives", Publisher: InTech (ISBN 978-953-51-2760-4).

#### ii) Edition of journal issues

Forthcoming:

Editor: H. Carvalho, **Susana Azevedo**

Issue Title: IMPROVING SUSTAINABILITY IN AN INDUSTRY 4.0 SETUP THROUGH CIRCULAR ECONOMY

Journal: International Journal of Advanced Operations Management

Volume:

Year: forthcoming

Editor: Govindan, K., H. Carvalho, **Susana Azevedo**

Issue Title: Sustainability in an Industry 4.0 setup through Circular Economy

Journal: Computers and Industrial Engineering

Volume:

Year: forthcoming

Editor: **Luísa Carvalho**

Issue Title: Entrepreneurial Ecosystems in a Digital Economy

Journal: International Journal of E-Entrepreneurship and Innovation (IJEEI)

Volume: Special Issue

Year: forthcoming

Editor: **Luísa Carvalho**

Issue Title: Entrepreneurship and Regional Development

Journal: Journal Region

Volume: Special Issue

Year: forthcoming

Editor: K. Govindan, S. Seuring, Q. Zhu, **Susana Azevedo**

Issue Title: Embedding Sustainability Dynamics in Supply Chain Relationship Management and Governance Structures

Journal: *Journal of Cleaner Production*

Volume: 112

Year: 2016

### 3.3.4. Thesis supervision

#### i) Ph.D. supervisions concluded

Working Title: *Strategic Interactions of the Urban Land Developers in the Housing Market*

Author: Pedro Garcês

Supervisor(s): **Cesaltina Pires**

Degree: Ph.D. (Economics)

Institution: Universidade de Évora

Working Title: *Determinantes do Desempenho Inovador em Portugal e na Europa*

Author: João A.M. Carvalho

Supervisor(s): Maria José Madeira, **Luísa Carvalho**

Degree: Ph.D. (Management)

Institution: Universidade da Beira Interior

Working Title: *Relação Entre as Alianças Estratégicas, Capital Intelectual e o Desempenho: Um Estudo Aplicado às PMEs de Base Tecnológica Portuguesas*

Author: António J.M. Ferreira

Supervisor(s): **Mário Franco**

Degree: Ph.D. (Management)

Institution: Universidade da Beira Interior

Working Title: *Responsabilidade Social das Organizações - Qualidade e autenticidade do relacionamento entre a empresa e os seus clientes e colaboradores*

Author: Paulo S.S. Pereira

Supervisor(s): Fátima Jorge, **M. Raquel Lucas**

Degree: Ph.D. (Management)

Institution: Universidade de Évora

Working Title: *Privacidade dos dados em ambientes de interoperabilidade - a área da saúde*

Author: Secundino D.M. Lopes

Supervisor(s): **Rui Quaresma**

Degree: Ph.D. (Management)

Institution: Universidade de Évora

Working Title: *Inovação Social Corporativa: a inovação social como estratégia de negócio*

Author: Valdenor Clementino

Supervisor(s): **Soumodip Sarkar**

Degree: Ph.D. (Management)

Institution: Universidade de Évora

Working Title: *Desenvolvimento e Qualificação de Fornecedores: Análise da eficácia de programa para desenvolvimento e qualificação de fornecedores para grandes empresas*

Author: Érika M. Souza

Supervisor(s): **Susana Azevedo**

Degree: Ph.D. (Management)

Institution: Universidade Trás os Montes e Alto Douro

## ii) Ph.D. supervisions in progress

Working Title: *Explorando as capacidades dinâmicas e a Teoria dos Recursos em empresas familiares – um estudo de caso de um Grupo do Algarve*

Author: Rita I.G. Conceição,

Supervisor(s): **Carlos Cândido**, Nelson António

Degree: Ph.D. (Economic and Management Sciences)

Institution: Universidade do Algarve

Working Title: *O papel das alianças estratégicas na criação e desenvolvimento do turismo de saúde na sua vertente turismo médico: O caso do Algarve*

Author: Maria R.D.R. Costa

Supervisor(s): Adão Flores, **Carlos Cândido**

Degree: Ph.D. (Economic and Management Sciences)

Institution: Universidade do Algarve

Working Title: *Modelos de Gestão e Organização para a Inovação nas Micro e Pequenas Empresas*

Author: João B. Lourenço

Supervisor(s): Teresa Noronha, **Carlos Cândido**

Degree: Ph.D. (Economic and Management Sciences)

Institution: Universidade do Algarve

Working Title: *Measuring the sustainability level in supply chains: a triple bottom line approach*

Author: Alessandro M.A. Cortes

Supervisor(s): **Cesaltina Pires**

Degree: Ph.D. (Management)

Institution: Universidade de Évora

Working Title: *Gestão de Stocks num Centro de Distribuição Militar: Análise e simulação de modelos com dados reais*

Author: Fábio V. Mendes

Supervisor(s): **Cesaltina Pires**

Degree: Ph.D. (Management)

Institution: Universidade de Évora

Working Title: *Behavioral biases and efficiency of football clubs and of football betting exchange*

Author: Sandra C.S.P. Piteira

Supervisor(s): **Cesaltina Pires**

Degree: Ph.D. (Management)

Institution: Universidade de Évora

Working Title: *Consumerex, proposta de um modelo integrado de avaliação de serviços*

Author: João Diogo

Supervisor(s): Leonor V. Carvalho, **Cesaltina Pires**

Degree: Ph.D. (Management)

Institution: Universidade de Évora

Working Title: *A Lealdade e os Incidentes Críticos no Contexto da Prestação de Serviços: Um estudo longitudinal da relação Cliente-Empresa*

Author: Sheila A.M. Silva

Supervisor(s): **Cristina Marreiros**, Pedro S. Coelho

Degree: Ph.D. (Management)

Institution: Universidade de Évora

Working Title: *Relação entre práticas de gestão da qualidade em saúde, práticas de segurança do doente e indicadores de segurança do doente*

Author: Nélia Faria

Supervisor(s): **Luís Mendes**, Margarida Eiras

Degree: Ph.D. (Management)

Institution: Universidade da Beira Interior

Working Title: *O papel da liderança, contexto e estrutura no desempenho inovador das pme's industriais: o efeito mediador da ambidexria organizacional*

Author: José R. Andrade

Supervisor(s): **Luis Mendes, Mário Franco**

Degree: Ph.D. (Management)

Institution: Universidade da Beira Interior

Working Title: *Understanding the influence of international education/internship mobility programs on students' employability – a research from employers and students' perspective*

Author: Júlia M. D. Campos

Supervisor(s): **Luis Mendes, António João Nunes**

Degree: Ph.D. (Management)

Institution: Universidade da Beira Interior

Working Title: *Impacto da Capacidade de Absorção no Desempenho das Pequenas e Médias Empresas em Portugal: Efeito Mediador dos Motivos da Cooperação*

Author: Luis M.G. Valentim

Supervisor(s): João Lisboa, **Mário Franco**

Degree: Ph.D. (Management)

Institution: Universidade de Coimbra

Working Title: *Cooperativas Enquanto Alianças Estratégicas: Fatores Influenciadores da Satisfação*

Author: Vitor Figueiredo

Supervisor(s): **Mário Franco**

Degree: Ph.D. (Management)

Institution: Universidade da Beira Interior

Working Title: *O Protocolo e o Conselho Familiar como Instrumentos para o Planeamento da Sucessão nas Empresas Familiares*

Author: Cláudia S. M. Matias

Supervisor(s): **Mário Franco**

Degree: Ph.D. (Management)

Institution: Universidade da Beira Interior

Working Title: *Valores Pessoais como Fatores Intervenientes na Gestão das Empresas Familiares: Uma análise investigativa do contexto português*

Author: Claudio E.R. Camfield

Supervisor(s): **Mário Franco**

Degree: Ph.D. (Management)

Institution: Universidade da Beira Interior

Working Title: *O Papel das Relações de Confiança e Cooperação entre os Auditores Internos e Externos no Fortalecimento da Governance, Gestão de Risco e Controlo Interno*

Author: Maria G.C.T. Moraes

Supervisor(s): **Mário Franco**

Degree: Ph.D. (Management)

Institution: Universidade da Beira Interior

Working Title: *O Rendimento dos sistemas de agricultura familiar de Timor-Leste: Uma abordagem com foco nos produtores*

Author: Carlos de Deus

Supervisor(s): Pedro D. Henriques, **M. Raquel Lucas**

Degree: Ph.D. (Management)

Institution: Universidade de Évora

Working Title: *Experiência em serviços de saúde: a interação como locus da co-criação de valor*

Author: Luis Paixão

Supervisor(s): **M. Raquel Lucas, Nicolau Almeida**

Degree: Ph.D. (Management)

Institution: Universidade de Évora

Working Title: *Experiências de consumo hedónico nos shopping centres do nordeste brasileiro*

Author: Simone M.P.M. Ayres

Supervisor(s): **M. Raquel Lucas**

Degree: Ph.D. (Management)

Institution: Universidade de Évora

Working Title: *Variáveis determinantes na criação de um link total entre brand e consumidor*

Author: Sofia S.E.B. Costa

Supervisor(s): **M. Raquel Lucas, Andreia Basílio**

Degree: Ph.D. (Management)

Institution: Universidade de Évora

Working Title: *O empreendedor e o marketing experiencial nas MPE's no setor de restaurantes da cidade de João Pessoa*

Author: Francisca W.C. Pinto

Supervisor(s): **M. Raquel Lucas, Marta Silvério**

Degree: Ph.D. (Management)

Institution: Universidade de Évora

Working Title: *Impacto dos recursos na internacionalização das empresas vitivinícolas localizadas em clusters*

Author: António J.N. Silva

Supervisor(s): **M. Raquel Lucas**

Degree: Ph.D. (Management)

Institution: Universidade de Évora

Working Title: *Marketing de Conquista: A captação de novos clientes pelas escolas*

Author: Maurício A.F. Filho

Supervisor(s): **M. Raquel Lucas**

Degree: Ph.D. (Management)

Institution: Universidade de Évora

Working Title: *Gestão de processos de negócio num contexto de serviço público: Caso de estudo da Delegação Regional do Centro*

Author: Luís Fernando Segura Guerrinha

Supervisor(s): **Susana Azevedo**

Degree: Ph.D. (Management)

Institution: Universidade da Beira Interior

Working Title: *Avaliação da sustentabilidade em cadeias de abastecimento e o seu impacto no desempenho*

Author: Elisabete Maria Fonseca Correia

Supervisor(s): **Susana Azevedo**

Degree: Ph.D. (Management)

Institution: Universidade da Beira Interior

Working Title: *Proposal of Standard Models for Quality Function: Case Studies in Automotive Industry*

Author: João Carlos Lucas das Neves

Supervisor(s): **Susana Azevedo**

Degree: Ph.D. (Engineering and Production Management)

Institution: Universidade da Beira Interior

### iii) M.Sc. supervisions concluded

Working Title: *Análise SWOT: Casa da Criança do Rogil – IPSS*

Author: Vasco D.V. Marreiros

Supervisor(s): **Carlos Cândido**

Degree: M.Sc. (Business Management)

Institution: Universidade do Algarve

Working Title: *Como comer de forma saudável com Cozinha Tradicional Alentejana: um projeto de educação para adultos*

Author: Sílvia M.C.B. Lima

Supervisor(s): **Cristina Marreiros**

Degree: M.Sc. (Quality Management and Agro-Food Marketing)

Institution: Universidade de Évora e Universidade do Algarve

Working Title: *Plano de Marketing Digital: Aplicação a uma empresa de Prestação de Serviços Técnicos de Contabilidade*

Author: Mariana F. Almeida

Supervisor(s): **Cristina Marreiros**

Degree: M.Sc. (Statistics and Information Management)

Institution: Universidade Nova de Lisboa

Working Title: *Percepções empreendedoras dos jovens e ecossistema empreendedor: Um estudo aplicado à cidade do Huambo*

Author: Daniel Nondolo

Supervisor(s): **Luísa Carvalho**

Degree: M.Sc. (Management)

Institution: Universidade Aberta

Working Title: *Perfil das Mulheres Empreendedoras. Um estudo aplicado a Gestoras de Pequenas e Médias Empresas do concelho de Viseu*

Author: Ana S.A.R. Fernandes

Supervisor(s): **Luísa Carvalho**

Degree: M.Sc. (Management)

Institution: Universidade Aberta

Working Title: *Práticas de Gestão em Organizações do Terceiro Setor. Um estudo aplicado a Angola*

Author: Cecília C.A. Berner

Supervisor(s): **Luísa Carvalho**

Degree: M.Sc. (Accounting)

Institution: Universidade Lusófona de Humanidades e Tecnologias, Lisboa

Working Title: *Estudo da satisfação de clientes no setor bancário. Um estudo aplicado ao Standard Bank no Lubango*

Author: Leonela Guerreiro

Supervisor(s): **Luísa Carvalho**

Degree: M.Sc. (Management)

Institution: Universidade Aberta

Working Title: *O Papel de Networking no Marketing das PME*

Author: Liliana G. Cabral

Supervisor(s): **Mário Franco**

Degree: M.Sc. (Marketing)

Institution: Universidade da Beira interior

Working Title: *O Papel das Parcerias no Processo de Inovação Organizacional nas PME do Setor Automóvel*

Author: Sofia A.R. Serrão

Supervisor(s): **Mário Franco**

Degree: M.Sc. (Management)

Institution: Universidade da Beira interior

Working Title: *Fatores de Sucesso nas PME: Estudos de Caso Múltiplos*

Author: Maria M.S. Augusto

Supervisor(s): **Mário Franco**

Degree: M.Sc. (Management)

Institution: Universidade da Beira interior

Working Title: *Relação entre Liderança, Fatores Comportamentais e Empreendedorismo Coletivo: Um estudo aplicado à Unidade Local de Saúde (ULS) da Guarda*

Author: Pedro R.C. Antunes

Supervisor(s): **Mário Franco**  
Degree: M.Sc. (Health Management)  
Institution: Universidade da Beira interior

Working Title: *Avaliação da sustentabilidade da indústria automóvel do Reino Unido com base em relatórios de sustentabilidade*

Author: Miguel Barros  
Supervisor(s): **Susana Azevedo**, João Matias  
Degree: M.Sc. (Engineering and Production Management)  
Institution: Universidade da Beira Interior

Working Title: *Aplicação do pensamento Lean ao processamento de matérias-primas: Estudo de caso de uma empresa do setor da biomassa*

Author: José E. Varejão  
Supervisor(s): **Susana Azevedo**, Leonel Nunes  
Degree: M.Sc. (Engineering and Production Management)  
Institution: Universidade da Beira Interior

Working Title: *Portugal as a producer of biomass fuels for power production: an analysis of logistic costs associated to wood pellets exportation*

Author: Catarina Farias  
Supervisor(s): **Susana Azevedo**, Leonel Nunes  
Degree: M.Sc. (Engineering and Production Management)  
Institution: Universidade da Beira Interior

### 3.3.5. Funded research projects

#### i) Projects funded by national science agencies

Title: *Projeto de Desenvolvimento do Plano de Sustentabilidade dos Vinhos do Alentejo (ALT20-01-0853-FEDER-000013)*

CEFAGE researchers: **M. Raquel Lucas** (Coord.), **M. Conceição Rego**, **Rui Fragoso**  
Partner institutions: CVRA (Comissão Vitivinícola da Região Alentejana)  
Funding: 266.256,00€ (Alentejo 2020)  
Period: 2016-2018

Title: *AWARTECH - Animal Welfare Adjusted Real Time Environmental Conditions of Housing*

CEFAGE researchers: **M. Raquel Lucas**  
Partner institutions: EQUIPORAVE IBÉRICA, Lda, HEXASTEP, S.A  
Funding: 1.190.509€ (Alentejo 2020)  
Period: 2016 -2019

Title: *ProAgriFor - Promover o Envolvimento de Stakeholders do setor Agroflorestal no Alentejo na Transferência de Conhecimento e em Parcerias no âmbito do Projeto SMARTAgriFor (ALT20-03-0246-FEDER-000022)*

CEFAGE researchers: **M. Raquel Lucas**  
Funding: 249.750,48€  
Início: 2016-2018

Title: *Alentejo Circular - Promoção da economia circular nas explorações agrícolas e agroindústrias do Alentejo (ALT20-01-0853-FEDER-000023)*

CEFAGE researchers: **M. Raquel Lucas**  
Partner institutions: ISQ (Instituto de Soldadura e Qualidade, Lda)  
Funding: 294.498,06€ (Alentejo 2020)  
Period: 2016-2018

## ii) Projects funded by international research programs

Title: *European Network for Research Evaluation in the Social Sciences and the Humanities (COST)*

CEFAGE-UE researchers: **Luísa Carvalho**

Partner institutions: University of Grenoble; University of Twente; Slovenian Academy of Arts and Sciences; Royal Netherlands of Arts and Sciences; ETH Zurich; University of Antwerp; EvalHum; Vilnius University; Adam Mickiewicz University in Poznan

Funding: Not available

Period: 04/2016-04/2020

Title: SmartAgriFor-Collaboration to develop business plan for the Centre of Agriculture and Forestry (Project ID: 664599)

CEFAGE researchers: **M. Raquel Lucas**

Partner institutions: WAGENINGEN UNIVERSITY, UTAD, UCatólica Porto, UMinho, UCoimbra, ULisboa, UPorto, INIAV, UAveiro, UNL, SPI

Funding: 494.515€ (H2020 – EU - PQ para a Investigação e Inovação)

Period: 2014-2016

## iii) Projects funded by international industry-related programs

Title: *FlexStone – Novas Tecnologias para a Competitividade da Pedra natural (09/SI/2015)*

CEFAGE researchers: **Andreia Dionísio, Luís A.G. Coelho, M. Raquel Lucas**

Partner institutions: CEI, Universidade de Évora, IPP, Cevalor, Solancis, Torre

Funding: 2.117.962 (Programa Operacional para a Competitividade e Internacionalização, Portugal 2020)

Period: 01/07/2015 – 01/07/2017

## iv) Projects funded by national industry-related programs

Title: U.MAKE.ID.

CEFAGE-UE researchers: **Susana Azevedo**

Partner institutions: PICTONIO LDA., University of Beira Interior

Funding: 108.904,46 € (FCT) - Ref. 08/SI/2016 SI-I&DT Empresarial

Period: 01/10/2015 - 30/09/2017

## 3.3.6. Presentations at conferences and seminars

### i) Presentations at international conferences

Barros, M., **S. Azevedo**, “Supply chain sustainability assessment: the case of the automotive industry”, *2016 International Conference on Electrical, Mechanical and Industrial Engineering (ICEMIE2016)*, Phuket, Thailand, 24-25/04/2016

**Brito, D.**, A. Osório, R. Ribeiro, H. Vasconcelos, “Unilateral Effects Screens for Partial Horizontal Acquisitions: The Generalized HHI and GUPPI”, *43rd EARIE Annual Conference*, Nova School of Business and Economics, Lisbon, Portugal, 26-28/08/2016.

**Brito, D.**, L. Cabral, H. Vasconcelos, “Competitive Effects of Partial Control in an Input Supplier”, *Annual Conference of the Leibniz Science Campus MaCCI*, Mannheim Centre for Competition and Innovation, Mannheim, Germany, 3-4/03/2016.

Buainain, A.M., M.R. Sousa, **V. Duarte**, “Corporate Social Responsibility and Sustainable Development in Brazil”, *IPSA 24th World Congress*, Poznan, Poland, 26/07/2016.

Calisto, M. L., **S. Sarkar**, “Standing on the shoulders of giants: An ontology of corporate entrepreneurship”, *16th Annual Conference of the European Academy of Management*, Paris, France, 31/05-04/06/2017.



**Cândido, C., L.M.S. Coelho**, R.M.T. Peixinho, "ISO 9001 Financial Impact and ISO 9001 Withdrawal", *ICQEM 2016 – 2<sup>nd</sup> International Conference on Quality Engineering and Management*, Universidade do Minho, Guimarães, Portugal, 13-15/07/ 2016.

**Carvalho, L.**, B. Cibrão, "Metodologias ativas para o ensino do empreendedorismo em cursos universitários" / *International Fórum on Management, Escola Superior de Hotelaria e Turismo do Estoril*, Estoril, 10-11/10/2016.

Carvalhosa, M., S.P. Beatrice, **S. Azevedo**, F. Charrua-Santos, "Proposal of a Lean Index Development in Organizational Contexts," *Lecture Notes in Engineering and Computer Science: Proceedings of The World Congress on Engineering and Computer Science 2016*, San Francisco, USA, 19-21/10/2016.

Choo, A., N. Sriram, R. Srinivasan, **S. Sarkar**, "Effects Of Dual Innovation And Abandonment Of Innovation On Innovation Performance".

Correia, E.M.F., **S. Azevedo**, H. Carvalho, "Proposal of a maturity model for supply chain sustainability", *2016 International Conference on Electrical, Mechanical and Industrial Engineering (ICEMIE2016)*, Phuket, Thailand, 24-25/04/2016.

Costa, M., **C. Pires**, "Default Costs, Financial and Product Market Decisions and Default Risk", *43rd EARIE Annual Conference*, Lisbon, Portugal, 26-28/08/2016.

Costa, M., **C. Pires**, "Default Costs, Financial and Product Market Decisions and Default Risk", *10th Annual Meeting of the Portuguese Economic Journal*, Coimbra, Portugal, 1-3/07/2016.

Costa, M., **C. Pires**, "Empirical Links Between Market Structure, Capital Structure Decisions and Default Risk", *9th Portuguese Finance Network Conference*, Covilhã, Portugal, 22-24/06/2016.

Faria, C., L. Nunes, **S. Azevedo**, "Portugal as a producer of biomass fuels for power production: an analysis of logistics costs associated to wood pellets exportation", *UPEC2016 – 51 st International Universities' Power Engineering conference*, Coimbra, Portugal, 6-9/09/2016.

Hernández, R., F. Kellermanns, L.F. Cconcepción, **S. Sarkar**, "Entrepreneurial Orientation and Family Business Performance: The Moderating Effect of Socioemotional Wealth", *Southern Management Association*, Charlotte, NC, USA, 25-29/10/2016.

Hernández, R., F. Kellermanns, L.F. Cconcepción, **S. Sarkar**, "Does The Family Nature Of A Business Influence The Relationships Between Learning, Market And Entrepreneurial Orientations?" *12TH Workshop On Family Firm Management Research Bridging The Gap – Integrating Family Business Theory & Practice* Zwolle, The Netherlands, 12-14/05/2016.

Lopes, J., L. Farinha, **M. Franco**, "Networks Regional Development: The Model Proposal", *International Conference on Regional Triple Helix Dynamics - Session 5: Entrepreneurial Academia: University's third mission and Triple Helix*, Instituto Politécnico de Castelo Branco, Portugal, 29/06/2016.

**Lucas, M.R., M.C. Rego, C. Vieira, I. Vieira**, "Proximity and cooperation for innovative regional development: the case of Science and Technology Park of Alentejo", *56<sup>th</sup> ERSA Congress*, Vienna, Austria, 23-26/08/2016.

Matias, M., **S. Azevedo**, "Análise de um Sistema de Notificação de Incidentes e Eventos Adversos numa Unidade Local de Saúde –ULS", *3rd Annual Meeting Coimbra Health School*, Escola Superior de Tecnologia da Saúde de Coimbra (ESTeSC), 08/04/2016.

Nevado Gil, T., D. Gallardo, **L. Carvalho**, "La divulgacion de informacion sobre emprendimiento en administraciones públicas: Un estudio empírico en la administración local portuguesa" *European Academy of Management and Business Economics, AEDEM*, Las Palmas, Gran Canaria, Spain, 8-10/06/2016.

**Pereira, P.**, T. Ribeiro, "Evaluating the Impact of Partial Divestitures when Vertical Relations are Important", China Meeting of the Econometric Society, *Chengdu*, China, 25-27/06/2016.

**Pereira, P.**, T. Ribeiro, "Evaluating the Impact of Partial Divestitures when Vertical Relations are Important", *Asia Meeting of the Econometric Society*, Kyoto, Japan, 11-13/8/2016.

**Pires, C.,** P. Garcês, “Price competition in the housing market”, *2016 UECE Game Theory Lisbon*, Lisbon, Portugal, 3-5/11/2016.

**Sarkar, S.,** “Creative Construction Insights on Sustainable Entrepreneurship from the BOP” *Keynote in PRIME Conference*, RISEBA University, Riga, Letonia, 18-19/04/2016.

**Sarkar, S.,** “Creative Construction - antecedents, process and consequences of grassroots entrepreneurship” *ICSB 2016 World Conference*, New York, USA, 15-18/06/2016.

**Sarkar, S.,** “CSR- Accessing the Knowledge Base”, *ICSB 2016 World Conference*, New York, USA, 15-18/06/2016.

**Sarkar, S.,** O. Osiyevskyy, “Strategies of Exploiting Established Technology in Response to Disruptive Innovations”, *Academy of Management Conference*, *Academy of Management*, Philadelphia, USA, 11/2016.

Silveira, P.D, **C. Marreiros,** “Shopper Centric Category Management in Convenience Stores: a Qualitative Study”, *3rd International Conference on Business and Economics*, Selangor, Malasia, 21-23/09/2016.

## ii) Presentations at iberian or portuguese-spoken conferences

Backx, A., I. Yamamoto, **L. Carvalho,** “Taxonomia das Metodologias Ativas com base na Taxonomia de Bloom” *Sessão Especial 6 - Métodos de aprendizagem no ensino superior no século XXI . Desafios e novas tendências que apelam à aprendizagem centrado no estudante. 6ª Conferencia da FORGES*, Universidade Estadual de Campinas, Unicamp, Campinas, Brasil, 28-30/11/2016.

Baltazar, M.S., **M.C. Rego,** I. Ramos, M. Freire, **A. Dionísio, M.R. Lucas,** “Ligações e Percepções de Desenvolvimento Urbano-Rural em Portugal”, *IX Congresso Português de Sociologia - PORTUGAL, TERRITÓRIO DE TERRITÓRIOS*, Universidade do Algarve, Faro, Portugal, 6- 8/07/2016.

Borell, D., **M. Franco,** “A Construção da Confiança em uma Relação de Coopetição: Um Estudo de Caso”, *IX Encontro de Estudos Organizacionais da ANPAD (EnEO) –Tema 07: Estratégia e Cooperação*, Costa do Sauípe, Brasil, 25-28/09/2016.

**Carvalho, L.,** A. Noronha, D. Mantovani, “Estratégias de aprendizagem em e-learning no ensino universitário” *CNAPPES 2016*, Universidade de Lisboa, 14-15/07/2016.

**Carvalho, L.,** B. Cibrão, “Digital Storytelling no ensino de Empreendedorismo em classes virtuais” *II Jornadas de Educação para o Empreendedorismo*, Instituto Pedro Nunes, Coimbra, Portugal, 6/09/2016.

**Carvalho, L.,** Costa, T. “O empreendedorismo com desígnio estratégico no ensino superior. Relato de metodologias ativas de educação para o empreendedorismo em classes presenciais e em e-learning” *Sessão Especial 6- Métodos de aprendizagem no ensino superior no século XXI . Desafios e novas tendências que apelam à aprendizagem centrado no estudante. 6ª Conferencia da FORGES*, Universidade Estadual de Campinas, Unicamp, Campinas, Brasil, 28- 30/11/2016.

Casteleiro, C., **L. Mendes,** “Sistemas de gestão da qualidade desenvolvidos em IPSS e a perceção do empowerment e engagement dos colaboradores: um estudo empírico”, *VII Encontro dos Investigadores da Qualidade*, Troia, Portugal, 03/06/2016.

Colpas, F. C., A. D. Daniel, **R. Quaresma,** “O ensino formal do empreendedorismo ao nível universitário: análise de ferramentas e metodologias pedagógicas”, *II Jornadas do Ensino do Empreendedorismo*, Instituto Pedro Nunes, Coimbra, Portugal, 06/09/2016.

Costa, T., **L. Carvalho,** “Inovação e Responsabilidade Social na educação empreendedora – o caso da atividade pedagógica do Empreendedor responsável por um dia” *Sessão Especial 6- Métodos de aprendizagem no ensino superior no século XXI . Desafios e novas tendências que apelam à aprendizagem centrado no estudante. 6ª Conferencia da FORGES*, Universidade Estadual de Campinas, Unicamp, Campinas, Brasil, 28-30/11/ 2016.

Cruz, R.W.S., **M.R. Lucas,** M.L. Carvalho, “Comercialização do arroz no distrito de Bobonaro, Sub-Distrito de Maliana - análise dos factores que a afectam e da margem de comercialização” *ESADR 2016, VIII Congresso APDEA e II Encontro Lusófono de Economia, Sociologia, Ambiente e Desenvolvimento Rural*, Coimbra, Portugal, 7-9/09/2016.

Dahu, S., M.L. Carvalho, **M.R. Lucas**, “A importância do Feijão Mungo no Suco de Leolima, Sub Distrito Balibo, Distrito de Bobonaro – análise da sua Produção e Comercialização”, *ESADR 2016, VIII Congresso APDEA e II Encontro Lusófono de Economia, Sociologia, Ambiente e Desenvolvimento Rural*, Coimbra, Portugal, 7-9/09/2016.

**Dionísio, A.**, A. Silva, L. Lopes, A. Oliveira, M. Peres, **M.R. Lucas**, “Academia da Pedra Natural – Uma Parceria inovadora para o desenvolvimento de um setor base!” *ESADR 2016, VIII Congresso APDEA e II Encontro Lusófono de Economia, Sociologia, Ambiente e Desenvolvimento Rural*, Coimbra, Portugal, 7-9/09/2016.

Esteves, L., **L. Mendes**, “Implementação de sistemas de gestão da qualidade nas instituições de ensino superior e as competências individuais dos colaboradores”, *VII Encontro dos Investigadores da Qualidade*, Troia, Portugal, 03/06/2016.

**Ferreira, A.**, **M. Franco**, “O efeito mediador do capital intelectual na relação entre as alianças estratégicas e o desempenho organizacional nas PME de base tecnológica” – *XXVI Jornadas Luso-Espanholas de Gestão Científica, Conferência que se realizou na Escola Superior de Gestão de Idanha-a-Nova*, Idanha-a-Nova, Portugal, 3-06/02/2016.

**Franco, M.**, M. Domingos, “Influência das Características e dos Traços de Personalidade do Empresário-Fundador no Desempenho das PME Familiares”, *XXVI Jornadas Luso-Espanholas de Gestão Científica sob o lema “Competitividade das Regiões Transfronteiriças”*, Escola Superior de Gestão, Instituto Politécnico de Idanha à Nova, Portugal, 3-6/02/2016.

Freire, C., I. Ramos, **M.C. Rego**, **A. Dionísio**, M.S. Baltazar, **M.R. Lucas**, “Agricultura Urbana: Impactos Económicos, Sociais e Ecológicos”, *ESADR 2016, VIII Congresso APDEA e II Encontro Lusófono de Economia, Sociologia, Ambiente e Desenvolvimento Rural*, Coimbra, Portugal, 7-9/09/2016.

Laurett, R., **L. Mendes**, “O Modelo Europeu de Excelência da EFQM (European Foundation Quality Management) no contexto do Ensino Superior: Uma revisão sistemática da literatura”, *VII Encontro dos Investigadores da Qualidade*, Troia, Portugal, 03/06/2016.

Lobo, J.O.S., P.D. Henriques, **R. Frago**, **M.R. Lucas**, “As atividades da pesca e o rendimento dos pescadores do Distrito de Liquiçá”, *ESADR 2016, VIII Congresso APDEA e II Encontro Lusófono de Economia, Sociologia, Ambiente e Desenvolvimento Rural*, Coimbra, Portugal, 7-9/09/2016.

Lopes, S., **R. Quaresma**, “Data privacy in interoperability environments – a case study in the Portuguese healthcare sector”, *16ª Conferência da Associação Portuguesa de Sistemas de Informação, Instituto Superior de Contabilidade e Administração do Politécnico do Porto*, Porto, Portugal, 22-24/09/2016.

Morais, G., **M. Franco**, “Análise Exploratória dos Fatores de Cooperação e Confiança entre os Auditores Internos e Externos nas Organizações”, *XXVI Jornadas Luso-Espanholas de Gestão Científica sob o lema “Competitividade das Regiões Transfronteiriças”*, Escola Superior de Gestão, Instituto Politécnico de Idanha à Nova, Portugal, 3-6/02/2016.

**Pires, C.**, **A. Dionísio**, **L.A.G. Coelho**, “Estimating utility functions using GME”, *Journal of Applied Statistics; Workshop on Maximum Entropy and its Applications*, Universidade de Aveiro, Aveiro, Portugal, 12/10/2016.

**Rego, M.C.**, C. Freire, I.J. Ramos, **A. Dionísio**, M.S. Baltazar, **M.R. Lucas**, “Agricultura Urbana: Impactos Económicos, Sociais e Ecológicos”, *ESADR 2016, VIII Congresso APDEA e II Encontro Lusófono de Economia, Sociologia, Ambiente e Desenvolvimento Rural*, Coimbra, Portugal, 7-9/09/2016.

**Rego, M.C.**, C. Freire, I.J. Ramos, **A. Dionísio**, M.S. Baltazar, **M.R. Lucas**, “Vínculos Urbano-Rurais em Portugal e Perspectivas de Desenvolvimento”, *ESADR 2016, VIII Congresso APDEA e II Encontro Lusófono de Economia, Sociologia, Ambiente e Desenvolvimento Rural*, Coimbra, Portugal, 7-9/09/2016.

Silveira, H.R., P.D. Henriques, M.L. Carvalho, **M.R. Lucas**, “Timor-Leste e o mercado dos têxteis tradicionais”, *ESADR 2016, VIII Congresso APDEA e II Encontro Lusófono de Economia, Sociologia, Ambiente e Desenvolvimento Rural*, Coimbra, Portugal, 7-9/09/2016.

**Vaz, E.** “Desarrollo Económico de Portugal: desde los años 50 hasta la actualidad”, *Facultad de Ciencias Económicas y Empresariales, Universidad de Extremadura*, Spain, 03/05/2016.

### iii) Seminars presented at other institutions

**Brito, D.**, L. Cabral, H. Vasconcelos, “Competitive Effects of Partial Control in an Input Supplier”, Paris School of Economics, Paris, France, 1/07/2016.

**Carvalho. L.**, “Compatibilidade entre PINTEC e CIS para a inovação empresarial”, *Grupo de Pesquisa Estudos de Inovação e Internacionalização*, Universidade de São Paulo, Brasil, 23/11/2016.

**Carvalho. L.**, “Empreendedorismo Digital”, *Programa de Mestrado Profissional em Empreendedorismo, Faculdade de Economia e Administração*, Universidade de São Paulo, Brasil, 1/06/2016.

**Carvalho. L.**, “Empreendedorismo e Sustentabilidade”, *Jornada de Formación en emprendimiento Y responsabilidad social*, Universidade da Extremadura, Badajoz, Espanha, 20/12/2016.

**Carvalho. L.**, “Incubadoras Empresariais: Estudos comparados em Portugal e no Brasil” Seminário Educación, Emprendimiento e Innovación, Universidade de Extremadura, Espanha, 16/05/2016.

**Lucas, M.R.**, “TURISMO RESPONSÁVEL, ÉTICO E SUSTENTÁVEL: Unindo o Meio Ambiente, as Comunidades e a Cultura no Lago Alqueva”, Universidade de Extremadura, Facultad de Estudios Empresariales y Turismo, Cáceres, Espanha, 13/12/2016.

**Lucas, M.R.**, I.J. Ramos, **M.C. Rego**, “Desenvolvimento Rural Brasil / Portugal, Desafios da Sustentabilidade”, UNIOESTE, Universidade Estadual do Oeste do Paraná, Campus de Toledo, Brasil, 02/12/2016.

**Sarkar, S.**, “Slumdog Entrepreneurs: Creating Something from Nothing”, *Asia Center Fellows Seminar Series*, Harvard University, 18/11/2016.

**Sarkar, S.**, “Empreendedorismo no Setor Público”, *International Speaker Series*, Universidade Federal de Viçosa, Minas Gerais, Brasil, 8/11/2016.

## 3.4. Labour, Regional and Macroeconomics

### 3.4.1. Team members



**Antónia de Jesus Henriques Correia**  
UNIVERSIDADE DO ALGARVE

Ph.D. (Economics), U. Algarve, 2000  
M.Sc. (Strategy), ISEG/UTL, 1994  
B.A. (Management), U. Algarve, 1990

Research interests: *Consumer Behaviour; Choice/Decision Models; Tourism Economics; Risk and Uncertain Behaviours; Markets and Pricing, Social Behaviour.*



**Carlos Manuel Rodrigues Vieira**  
UNIVERSIDADE DE ÉVORA

Ph.D. (Economics), U. Loughborough, 1999  
M.Sc. (Economics), ISEG/UTL, 1995  
B.A. (Economics), U. Évora, 1990

Research interests: *Monetary Economics; European Integration.*



**Elsa Cristina Neves Januário Vaz**  
UNIVERSIDADE DE ÉVORA

Ph.D. (Economics), ISEG/UTL, 2009  
M.Sc. (Economia Internacional), ISEG/UTL, 1999  
B.A. (Economics), U. Évora, 1994

Research interests: *International Economics; Economic Integration; General Equilibrium Models.*



**Fernanda Antonia Josefa Llusa**  
UNIVERSIDADE NOVA DE LISBOA

Ph.D. (Economics), U. California, 2003  
M.Sc. (Economics), U. California, 2001  
M.Sc. (Business Economics), Fundação Getúlio Vargas, 1997  
B.A. (Economics), U. São Paulo, 1992

Research interests: *Entrepreneurship concept and measurement; Female entrepreneurship; Economic growth, geography and institutions.*



**Isabel Maria Pereira Viegas Vieira**  
UNIVERSIDADE DE ÉVORA

Ph.D. (Economics), U. Loughborough., 1999  
M.Sc. (Economics), ISEG/UTL, 1995  
B.A. (Economics), U. Évora, 1990

Research interests: *Financial Integration; International Finance.*



**Joaquim Amaro Graça Pires Faia e Pina Catalão Lopes**

UNIVERSIDADE NOVA DE LISBOA

Ph.D. (Economics), U. Pompeu Fabra, 2001

M.Sc. (Monetary and Financial Economics), U. Pompeu Fabra, 1996

B.A. (Economics), U. Nova de Lisboa, 1989

Research interests: *Quantitative and applied macroeconomics; Quantitative financial and business economics.*



**João Manuel Rodrigues Pereira**

UNIVERSIDADE DE ÉVORA

Ph.D. (Economics), U. Évora, 2003

M.Sc. (Monetary and Financial Economics), ISEG/UTL, 1997

B.A. (Economics), U. Évora, 1993

Research interests: *Labour Economics; Regional Labour Markets and Labour Mobility.*



**João Fernando Guerreiro Romão**

UNIVERSIDADE DO ALGARVE

Ph.D. (Tourism), U. Algarve, 2012

M.Sc. (Economics and Management of S&T), ISEG, 1995

B.A. (Economics), ISEG, 1991

Research interests: *Tourism; Innovation; Urban and regional economics; Spatial econometrics.*



**Jorge Miguel Lopo Gonçalves Andraz**

UNIVERSIDADE DO ALGARVE

Ph.D. (Economics), U. Algarve, 2001

M.Sc. (Management and Economic Sciences), U. Algarve, 1996

B.A. (Economics), U. Católica Portuguesa, 1988

Research interests: *Economic Growth; Macroeconometrics; Public Policies.*



**José Manuel Madeira Belbute**

UNIVERSIDADE DE ÉVORA

Ph.D. (Economics), U. Évora, 1996

M.Sc. (Economics), ISEG/UTL, 1991

B.A. (Economics), U. Évora, 1985

Research interests: *Macroeconomics; Economic Growth and Sustainability; Economic Education.*



**Luiz Tadeu Milheiro de Menezes Pinto Machado**

ESCOLA DE HOTELARIA E TURISMO DA MADEIRA

Ph.D. (Economics), UTL/ISEG, 2013

M.Sc. (Strategic Management and Tourism Development), U. Madeira, 1998

B.A. (Tourism Management), Instituto de Novas Profissões, 1992

Research interests: *Tourism/Transport Economics; Destination Image; Loyalty Guests; Productivity and Efficiency Modeling; Innovation and Technology.*



**Marcelo Serra Santos**

UNIVERSIDADE DA BEIRA INTERIOR

Ph.D. (Economics), U. Évora and U. Beira Interior, 2015

M.Sc. (Economics), U. Beira Interior, 2012

B.A. (Economics), U. Beira Interior, 2009

Research interests: *Economic Development; Human Capital; Wage Inequality.*



**Maria Aurora Murcho Galego**

UNIVERSIDADE DE ÉVORA

Ph.D. (Economics), U. Bristol, 1998

M.Sc. (Mathematics Applied to Economics and Business), ISEG/UTL, 1992

B.A. (Economics), U. Évora, 1988

Research interests: *Applied Econometrics; Labour Economics; International Trade and Foreign Direct Investment.*



**Maria Conceição Peixe Rego**

UNIVERSIDADE DE ÉVORA

Ph.D. (Economics), U. Évora, 2003

M.Sc. (Applied Economics), U. Nova de Lisboa, 1997

B.A. (Economics), U. Évora, 1991

Research interests: *Regional and Urban Economic Development.*



**Nuno Carlos Leitão**

INSTITUTO POLITÉCNICO DE SANTARÉM

Ph.D. (Economics), U. Lusíada de Lisboa, 2008

M.Sc. (International Economics), ISEG/UTL, 2002

B.A. (International Relations), U. Minho, 1995

Research interests: *Intra- Industry Trade; Foreign Direct Investment; Migrations; Dynamic Panel Data Model.*



**Óscar João Atanázio Afonso**

UNIVERSIDADE DO PORTO

Ph.D. (Economics), U. Porto, 2004

M.Sc. (Economics), U. Porto, 1999

B.A. (Economics), U. Porto, 1991

Research interests: *Economic growth and international trade.*



**Paulo Fernando Rodrigues Lérias Júlio**

BANCO DE PORTUGAL

Ph.D. (Economics), NOVA School of Business and Economics, 2010

B.A. (Economics), NOVA School of Business and Economics, 2004

Research interests: *Economia Pública, Economia Internacional, Macroeconomia.*



**Pedro Cunha Neves**  
UNIVERSIDADE DA BEIRA INTERIOR

Ph.D. (Economics), U. Porto, 2013  
B.A. (Economics), U. Porto, 2007

Research interests: *Crescimento Económico; Desigualdades.*



**Teresa Eugénia de Bourbon Bobone Galhardo Simões de Vasconcelos e Sousa**  
UNIVERSIDADE LUSÓFONA

Ph.D. (Economics), U. Nova de Lisboa, 2010  
B.A. (Economics), U. Coimbra, 1991

Research interests: *Regional and Urban Economic Development.*



**Tiago Miguel Guterres Neves Sequeira**  
UNIVERSIDADE DA BEIRA INTERIOR

Ph.D. (Economics), U. Nova Lisboa, 2004  
B.A. (Economics), U. Beira Interior, 1999

Research interests: *Economic Growth; Business Cycles.*

### 3.4.2. Publications

#### i) Articles published in scientific peer-review journals

##### i.1) Articles published in selected journals (indexed in CEFAGE ranking)

Forthcoming:

Azevedo, M.L., **O. Afonso**, S.T. Silva, “Endogenous Growth and Intellectual Property Rights: A North–South Modelling Proposal with Population Ageing”, *Australian Economic Papers*, forthcoming.

([dx.doi.org/10.1111/1467-8454.12075](https://doi.org/10.1111/1467-8454.12075))

Barros, C., R. Butler, C. Dercio, **L.P. Machado**, “Heterogeneous Hotels and Web Travel Agencies in Maputo”, *Tourism Management*, forthcoming.

**Belbute, J.**, A. Pereira, “Do Global CO2 Emissions from Fuel Consumption Exhibit Long Memory? A Fractional Integration Analysis,” *Applied Economics*, forthcoming.

([dx.doi.org/10.1080/00036846.2016.1273508](https://doi.org/10.1080/00036846.2016.1273508))

**Correia, A.**, J. Serra, J. Artal-Tur, “Steady tourists’ relation with a mature destination: The case of Portugal”, *Tourism Economics*, 1-13, forthcoming.

([dx.doi.org/10.5367/te.2016.0563](https://doi.org/10.5367/te.2016.0563))

Costa, A., J. Figueira, **C. Vieira, I. Vieira**, “An application of the ELECTRE TRI-C method to characterize government performance in OECD countries”, *International Transactions in Operational Research*, forthcoming.

([dx.doi.org/10.1111/itor.12394](https://doi.org/10.1111/itor.12394))

**Júlio, P.**, J. Tavares, “The good, the bad, and the different: Can gender quotas raise the quality of politicians?”, *Economica*, forthcoming.

([dx.doi.org/10.1111/ecca.12222](https://doi.org/10.1111/ecca.12222))



Kozak M, **A. Correia**, G. Del Chiappa, "The propensity to bargain while on a vacation", *Tourism Economics*, forthcoming.

([dx.doi.org/10.5367/te.2015.0504](https://doi.org/10.5367/te.2015.0504))

**Pereira, J., M.A. Galego**, "Inter-country wage differences in the European union", *International Labour Review*, forthcoming.

([dx.doi.org/10.1111/ilr.12014](https://doi.org/10.1111/ilr.12014))

**Sequeira, T.**, "Income and Democracy: taking parameter heterogeneity and cross-country dependency into account", *BE Journal of Macroeconomics*, forthcoming.

**Sequeira, T., M. Santos**, A. Ferreira-Lopes, "Income Inequality, TFP, and Human Capital", *Economic Record*, forthcoming.

([dx.doi.org/10.1111/1475-4932.12316](https://doi.org/10.1111/1475-4932.12316))

**Sequeira, T.**, R. Viegas, A. Ferreira-Lopes, "Income and Religion: a heterogeneous panel data analysis", *Review of Social Economy*, forthcoming.

([dx.doi.org/10.1080/00346764.2016.1195640](https://doi.org/10.1080/00346764.2016.1195640))

Silva, V., **E. Ramalho, C. Vieira**, "The Use of Cheques in the European Union: A Cross-Country Analysis", *Open Economies Review*, forthcoming.

([dx.doi.org/10.1007/s11079-016-9412-1](https://doi.org/10.1007/s11079-016-9412-1))

Tavares, J.M., **N.C. Leitão**, "Research note: The Determinants of International Tourism Demand for Brazil", *Tourism Economics*, forthcoming.

([dx.doi.org/10.5367/te.2016.0540](https://doi.org/10.5367/te.2016.0540))

## 2016

**Afonso, O.** (2016), "Effects of labour-market institutions on employment, wages, R&D intensity and growth in 27 OECD countries: from theory to practice", *Economic Modelling*, 53, 48-62.

([dx.doi.org/10.1016/j.econmod.2015.11.009](https://doi.org/10.1016/j.econmod.2015.11.009))

**Afonso, O.** (2016), "R&D intensity, economic growth and firm-size growth: theory and practice" *Applied Economics*, 48(32), 2973-2993.

([dx.doi.org/10.1080/00036846.2015.1133896](https://doi.org/10.1080/00036846.2015.1133896))

**Afonso, O.**, A. Sarabanda (2016), "The impact of health sector on R&D, economic growth and wages", *Applied Economics Letters*, 23(14), 1006-1011.

([dx.doi.org/10.1080/13504851.2015.1128069](https://doi.org/10.1080/13504851.2015.1128069))

**Afonso, O., P. Neves**, M. Thompson (2016) "The skill premium and economic growth with costly investment, complementarities and international trade of intermediate goods", *Japan and the World Economy*, 37-38, 73-86.

([dx.doi.org/10.1016/j.japwor.2016.04.002](https://doi.org/10.1016/j.japwor.2016.04.002))

**Afonso, O.**, S. Silva, I. Soares (2016), "Tax on emissions or subsidy to renewables? Evaluating the effects on the economy and the environment", *Applied Economics Letters*, 23(10), 690-694.

([dx.doi.org/10.1080/13504851.2015.1100243](https://doi.org/10.1080/13504851.2015.1100243))

**Andraz, J.**, N. Norte, H. Gonçalves (2016), "Do tourism spillovers matter in regional economic analysis? An Application to Portugal", *Tourism Economics*, 22(5), 939-963.

([dx.doi.org/10.5367/te.2015.0469](https://doi.org/10.5367/te.2015.0469))

**Andraz, J.**, P.M.M. Rodrigues (2016), "Monitoring tourism flows and destination management: Empirical evidence for Portugal", *Tourism Management*, 56, 1-7.

([dx.doi.org/10.1016/j.tourman.2016.03.019](https://doi.org/10.1016/j.tourman.2016.03.019))

**Belbute, J.**, A. Pereira (2016), "Does Final Energy Demand in Portugal Exhibit Long Memory? A Fractional Integration Analysis", *Portuguese Economic Journal* (Special issue on Energy Economics), 15(2), 59-77.

([dx.doi.org/10.1007/s10258-016-0118-5](https://doi.org/10.1007/s10258-016-0118-5))

**Belbute, J.**, J. Delgado, L. Massala (2016), "Measuring persistence in inflation: evidence for Angola", *South African Journal of Economics*, 84(4), 594-606.

([dx.doi.org/10.1111/saje.12118](https://doi.org/10.1111/saje.12118))

Catalão-Lopes, M., **J.P. Pina**, A. Branca, A. (2016), "Social responsibility, corporate giving and the tide", *Management Decision*, 54(9), 2294-2309.

([dx.doi.org/10.1108/MD-12-2015-0553](https://doi.org/10.1108/MD-12-2015-0553))

**Correia, A.**, M. Kozak (2016), "Tourists' shopping experiences at street markets: cross-country research", *Tourism Management*, 56, 85-95.

([dx.doi.org/10.1016/j.tourman.2016.03.026](https://doi.org/10.1016/j.tourman.2016.03.026))

**Correia, A.**, M. Kozak, H. Reis (2016), "Conspicuous consumption of the elite: Social and self-congruity in tourism choices", *Journal of Travel Research*, 55(6), 738-750.

([dx.doi.org/10.1177/0047287514563337](https://doi.org/10.1177/0047287514563337))

Jambor, A., **N.C. Leitão** (2016), "Industry-Specific determinants of Vertical intra-industry trade in the NMS agri-food sector", *Post-Communist Economies*, 28(1), 34-48.

([dx.doi.org/10.1080/14631377.2015.1124553](https://doi.org/10.1080/14631377.2015.1124553))

Neuts, B., **J. Romão**, P. Nijkamp, A. Shikida (2016), "Market segmentation and their economic impacts in an ecotourism destination: An applied modelling study on Hokkaido, Japan", *Tourism Economics*, 22(4), 793-808.

([dx.doi.org/10.1177/1354816616654252](https://doi.org/10.1177/1354816616654252))

**Neves, P., O. Afonso**, S. Silva (2016), "A Meta-Analytic Reassessment of the Effects of Inequality on Growth", *World Development*, 78, 386-400.

([dx.doi.org/10.1016/j.worlddev.2015.10.038](https://doi.org/10.1016/j.worlddev.2015.10.038))

**Romão, J.**, J. Guerreiro, P. Rodrigues (2016), "Tourism Growth and Regional Resilience: the "Beach Disease and the Consequences of the Global Crisis of 2007", *Tourism Economics*, 22(4), 699-714.

([dx.doi.org/10.1177/1354816616654243](https://doi.org/10.1177/1354816616654243))

**Silva, P.P., C. Vieira, I. Vieira** (2016), "The EU ban on uncovered sovereign credit default swaps: assessing impacts on liquidity, volatility and price discovery", *Journal of Derivatives*, 23 (4), 74-98.

([dx.doi.org/10.3905/jod.2016.23.4.074](https://doi.org/10.3905/jod.2016.23.4.074))

Silva, V., **E. Ramalho, C. Vieira** (2016), "The impact of SEPA in credit transfer payments: evidence from the euro area", *Research in International Business and Finance*, 38, 404-416.

([dx.doi.org/10.1016/j.ribaf.2016.04.013](https://doi.org/10.1016/j.ribaf.2016.04.013))

Sochirca, E., **O. Afonso**, S. T. Silva, **P. Neves** (2016), "Effects of political rivalry on public investments in education and income inequality", *Journal of Policy Modeling*, 38(2), 372-396.

([dx.doi.org/10.1016/j.jpolmod.2016.03.003](https://doi.org/10.1016/j.jpolmod.2016.03.003))

Veiga, J., A. Ferreira-Lopes, **T. Sequeira** (2016), "Public Debt, Economic Growth and Inflation in African Economies", *South African Journal of Economics*, 84(2), 294-322.

([dx.doi.org/10.1111/saje.12104](https://doi.org/10.1111/saje.12104))

## i.2) Articles published in ISI journals (not indexed in CEFAGE ranking)

Forthcoming:

---

2016

Morgado, A., **M. Santos, T. Sequeira**, A. Balcão Reis, A. Ferreira-Lopes (2016), "Measuring Labor Mismatch in Europe", *Social Indicators Research*, 129(1), 161-179.

([dx.doi.org/10.1007/s11205-015-1097-0](https://doi.org/10.1007/s11205-015-1097-0))

Pires, A., J. Sargedas, M. Miguel, **J.P. Pina**, G. Martinho (2016), "A case study of packaging waste collection systems in Portugal - Part II: Environmental and economic analysis", *Waste Management*, article in press.

([dx.doi.org/10.1016/j.wasman.2016.11.032](https://doi.org/10.1016/j.wasman.2016.11.032))

### i.3) Articles published in other peer-reviewed journals

#### Forthcoming:

**Belbute, J.**, J. Delgado, P. Silva, T.. Pascoa, "Measuring persistence in nominal exchange rate: Implications for Angola's entrepreneurship and business development," *International Journal of Latest Trends in Finance and Economics Sciences*, forthcoming.

Pereira, A., **J. Andraz**, "On the long-term macroeconomic effects of social security spending: Evidence for 12 EU countries", *Journal of International Business and Economics*, forthcoming.

Rodrigues, A., **A. Correia**, M. Kozak, "Assessing lake-destination image: insights from the industry side", *International Journal of Culture, Tourism, and Hospitality Research*, forthcoming.

#### 2016

**Andraz, J., C. Viegas**, N. Norte (2016), "On the relationship between sovereign bonds and credit default swaps in Portugal", *International Journal of Economic Sciences*, 5(1), 18-36.

([dx.doi.org/10.20472/ES.2016.5.1.002](https://doi.org/10.20472/ES.2016.5.1.002))

**Fragoso, R., M.C. Rego**, V. Bushenkov (2016), "Clustering of Territorial Areas: A Multi-Criteria Districting Problem", *Journal of Quantitative Economics*, 14(2), 179-198.

([dx.doi.org/10.1007/s40953-016-0030-y](https://doi.org/10.1007/s40953-016-0030-y))

Ikegami, M., **J. Romão** (2016), "Knowledge-based regional economics: a Comparative study on the Triple Helix framework for VU University (Amsterdam) and Hokkaido University (Sapporo)", *Studies in Regional Science*, 41(1), 101-113.

([dx.doi.org/10.2457/srs.46.101](https://doi.org/10.2457/srs.46.101))

Meireles, M., I. Soares, **O. Afonso** (2016), "Market-based instruments in a growth model with Dirty and Clean technologies", *Energy Procedia*, 106, 235-244.

Silva, R., **A. Correia** (2016), "Places and tourists: ties that reinforce behavioural intentions", *Anatolia - An International Journal of Tourism and Hospitality Research*, 27, 11-17.

([dx.doi.org/10.1080/13032917.2016.1240093](https://doi.org/10.1080/13032917.2016.1240093))

### ii) Articles and chapters published in scientific books

#### Forthcoming:

Barros, C.P., **L.P. Machado**, "Tourism and the Angolan economy", in L. Lowry, G. Golson (eds), *The SAGE International Encyclopedia of Travel and Tourism*, London: Sage Publishing, forthcoming.

Barros, C.P., **L.P. Machado**, S.H. K. Xavier, "Tourism in Mozambique an Overview", in L. Lowry, G. Golson (eds), *The SAGE International Encyclopedia of Travel and Tourism*, London: Sage Publishing, forthcoming.

**Belbute, J.**, A. Pereira, "An updated alternative reference scenario for global CO2 emissions", *Livro homenagem ao Professor Silva Lopes*, Lisboa: ISEG, forthcoming.

**Lucas, M.R., M.C. Rego, C. Vieira, I. Vieira** (2017), "Proximity and cooperation for innovative regional development: The case of the Science and Technology Park of Alentejo", in L. Carvalho (eds) *Handbook of Research on Entrepreneurial Development and Innovation within Smart Cities*, Hershey, PA: IGI Global, pp. 208-238. (ISBN: 9781522519782)

([dx.doi.org/10.4018/978-1-5225-1978-2](https://doi.org/10.4018/978-1-5225-1978-2))

**Machado, L.P.**, A. Almeida, "Walking tours and Tourism – Concept and Trends", in L. Lowry, G. Golson (eds), *The SAGE International Encyclopedia of Travel and Tourism*, London: Sage Publishing, forthcoming.

Barros, C.P., **L.P. Machado** (2016), "A Productivity analysis of network hotels" in S. Ivanov, M. Ivanova, V. Magnini (eds), *Routledge Handbook of Hotel Chain Management*, Routledge: Taylor Francis, pp. 359-373 (ISBN 978-1-138-80505-7).

Brito, P., **A. Correia**, J. Barros (2016), "The perceived image of Cape Verde: A confirmatory factor analysis" in J. Filipe, P. Startas (eds), *Modeling and New Trends in Tourism: A Contribution to Social and Economic Development*, USA: Nova editor USA, pp. 359-374 (ISBN: 978-1-63485-920-2).

**Correia, A.** (2016), "Prestige Tourism" in H.X. Jafari, (eds), *Encyclopedia of Tourism*, Berlin: Springer International Publishing AG (ISBN 978-3-319-01383-1).

**Correia, A.**, M. Kozak (2016), "Luxury Tourism" in Jafari, H. Xiao (eds), *Encyclopedia of Tourism*, Berlin: Springer International Publishing AG (ISBN 978-3-319-01383-1).

Pimpão, P., **A. Correia**, J. Duque, C. Zorrinho (2016), "Diffusion patterns in loyalty programs, chapter 8" in M. Kozak, N. Kozak (eds), *Tourism and Hospitality management, Vol.12, Advances in Culture, Tourism and Hospitality Research*, USA: Emerald, pp. 115-126 (ISBN : 978-1-78635-714-4).

**Rego, M.C., M.R. Lucas, I. Vieira, C. Vieira** (2016), "The Promotion of Entrepreneurship in Low Density Regions: The Case of the Agency for the Regional Development of Alentejo (ADRAL)" in L. Carvalho (eds), *Handbook of Research on Entrepreneurial Success and its Impact on Regional Development*, Pennsylvania, USA: IGI Global, pp. 223-245 (ISBN 978-1-466-69567-2).

### iii) Scientific, pedagogical and technical books

2016

**Afonso, O.**, P.B. Vasconcelos (2016), *Computational Macroeconomics: a concise introduction*, 1st edition, Routledge: Taylor & Francis Group (ISBN: 978-1-138-85965-4).

### 3.4.3. Editorial activities

#### i) Edition of scientific books

Forthcoming:

**Correia, A.**, M. Kozak, J. Gnoth, A. Fyall (2016), *Co-creation and Well-being in Tourism*, Springer (ISBN 978-3-319-44107-8).

2016

Matias, Á., P. Nijkamp, **J. Romão** (2016), *Impact Assessment in Tourism Economics*, Berlin: Springer-Verlag (ISBN 978-3-319-14919-6).

[dx.doi.org/10.1007/978-3-319-14920-2](https://doi.org/10.1007/978-3-319-14920-2)

#### ii) Edition of journal issues

Forthcoming:

---

Editor: **Correia, A.**, M. Kozak, A. Fyall, J. Gnoth (Guest Editors)  
Issue Title: From new markets to digital marketing  
Journal: *Anatolia – An International Journal of Tourism and Hospitality Research*  
Volume: 27(1)  
Year: 2016

Editor: **Romão, J.**, Á. Matias, P. Nijkamp  
Issue Title: Spatial and Sectorial Impact Studies in Tourism  
Journal: *Tourism Economics*  
Volume: 22(4)  
Year: 2016

Editor: Soares, I., **O. Afonso**  
Issue Title: Energy Economics: Demand, Prices, and Welfare ([dx.doi.org/ 10.1007/s10258-016-0121-x](https://doi.org/10.1007/s10258-016-0121-x))  
Journal: *Portuguese Economic Journal*  
Volume: 15(2)  
Year: 2016

### 3.4.4. Thesis supervision

#### i) Ph.D. supervisions concluded

Working Title: *Fidelização do Turista ao Destino – Uma perspectiva Multidimensional*  
Author: Rita Peres  
Supervisor(s): **Antónia Correia**, Sancho Silva  
Degree: Ph.D. (Economic and Management Sciences)  
Institution: Universidade do Algarve

#### ii) Ph.D. supervisions in progress

Working Title: *Análisis de la fidelidad de los turistas extranjeros que acuden a la península ibérica mediante modelos de supervivência*  
Author: Iveta Cutakova  
Supervisor(s): Andrés Artal, **Antonia Correia**  
Degree: Ph.D. (Tourism)  
Institution: Universidad Politécnica de Cartagena, Spain

Working Title: *Management Systems How hotels units deal with online reviews*  
Author: Teresa Cascais  
Supervisor(s): **Antonia Correia**  
Degree: Ph.D. (Tourism Management)  
Institution: ISCTE, Universidade Europeia

Working Title: *Wine gastronomy routes*  
Author: Arlindo Madeira  
Supervisor(s): **Antonia Correia**  
Degree: Ph.D. (Tourism Management)  
Institution: ISCTE, Universidade Europeia

Working Title: *Tourism Clusters*  
Author: Guldastan Berdikulova  
Supervisor(s): **Antonia Correia**  
Degree: Ph.D. (Tourism Management)  
Institution: Kytgыз National University

Working Title: *Novas Técnicas de Marketing para a Diversificação de Mercados e Fidelização de Clientes*

Author: Pedro Pimpão

Supervisor(s): **Antonia Correia**, João Duque, Carlos Zorrinho

Degree: Ph.D. (Marketing)

Institution: ISEG

Working Title: *Luxury tourism in Lisbon*

Author: Lunekova Evgeniya

Supervisor(s): **Antonia Correia**

Degree: Ph.D. (Tourism Management)

Institution: ISCTE, Universidade Europeia

Working Title: *Scale to assess residents' apathy toward tourism development*

Author: Vahid Ghasemi

Supervisor(s): Giacomo Del Chiappa, **Antonia Correia**

Degree: Ph.D. (Tourism)

Institution: University of Cagliari, Italy

Working Title: *Envelhecimento demográfico e dinâmica da população sénior no mercado de trabalho*

Author: Luís M. F. Lopes

Supervisor(s): **M. Aurora Galego**

Degree: Ph.D. (Economics)

Institution: Universidade de Évora

Working Title: *Essays on the Use of Payment Instruments*

Author: Vânia G.C.G. da Silva

Supervisor(s): **Esmeralda Ramalho, Carlos Vieira**

Degree: Ph.D. (Economics)

Institution: Universidade de Évora

Working Title: *How Digital Media Foster Women Entrepreneurship and Innovation?*

Author: Jaqueline R.I.R. Silva

Supervisor(s): **Fernanda Llussá**

Degree: Ph.D. (Digital Media)

Institution: UT Austin Portugal Program and Faculdade de Ciências e Tecnologia, Universidade Nova de Lisboa and University of Texas – Austin

Working Title: *Sharing Economy*

Author: Greicy Kelly Silva

Supervisor(s): **Fernanda Llussá**

Degree: Ph.D. (Digital Media)

Institution: UT Austin Portugal Program and Faculdade de Ciências e Tecnologia, Universidade Nova de Lisboa and University of Texas – Austin

Working Title: *Essays on the information efficiency of Credit Default Swaps' Markets*

Author: Paulo M. P. Silva

Supervisor(s): **Isabel Vieira, Carlos Vieira**

Degree: Ph.D. (Economics)

Institution: Universidade de Évora

Working Title: *VARs, ARCH models and Applications*

Author: Alberto Chicafo Mulenga

Supervisor(s): Marta Mateus, Pedro Mota, **Joaquim P. Pina**

Degree: Ph.D. (Statistics and Risk Management)

Institution: Universidade Nova de Lisboa

Working Title: *O Processo de Convergência Regional na União Europeia: Papel do Capital Humano, da I&D e da Difusão Tecnológica*

Author: José M.M. Serafim

Supervisor(s): **José Belbute, M. Aurora Galego**

Degree: Ph.D. (Economics)

Institution: Universidade de Évora

Working Title: *Capital Social, Networking e Desempenho Empresarial - A Criação de Valor em Incubadoras de Empresas em Portugal*

Author: Dinis Caetano

Supervisor(s): **Jorge Andraz**, Miguel Amaral

Degree: Ph.D. (Economic and Management Sciences)

Institution: Universidade do Algarve

Working Title: *A dinâmica do Turismo do Porto e Norte de Portugal e a relação com o Vinho do Porto*

Author: Diamantino Ribeiro

Supervisor(s): **Luiz Pinto Machado**

Degree: Ph.D. (Economics)

Institution: Universidade de Évora

### iii) M.Sc. supervisions concluded

Working Title: *Construção do Conceito de Glamping - Um novo paradigma no Turismo de Campismo em Portugal*

Author: Bárbara Carvalho Rebôcho

Supervisor(s): **Antónia Correia**

Degree: M.Sc. (Hospitality & Tourism Management)

Institution: Universidade Europeia

Working Title: *Turismo em Espaço Rural - As Preferências dos Turistas*

Author: Sandra Cristina Fernandes

Supervisor(s): **Antónia Correia**

Degree: M.Sc. (Hospitality & Tourism Management)

Institution: Universidade Europeia

Working Title: *Relatório de Estágio - A sazonalidade na empresa Naturimont*

Author: David Vístulo de Abreu

Supervisor(s): **Antónia Correia**

Degree: M.Sc. (Hospitality & Tourism Management)

Institution: Universidade Europeia

Working Title: *Sustentabilidade em Hotelaria - Uma Análise da Infusão/Difusão em Hotéis de Lisboa*

Author: Joana B. R. Almeida

Supervisor(s): **Antónia Correia**

Degree: M.Sc. (Hospitality & Tourism Management)

Institution: Universidade Europeia

Working Title: *O Carnaval no Concelho de Torres Vedras - Novas Estratégias de Desenvolvimento Turístico*

Author: Bianca S.C. Xavier

Supervisor(s): **Antónia Correia**

Degree: M.Sc. (Hospitality & Tourism Management)

Institution: Universidade Europeia

Working Title: *Experience Facilitation Process e o Posicionamento Estratégico de Unidades Hoteleiras*

Author: Pedro M. Barreiro

Supervisor(s): **Antónia Correia**

Degree: M.Sc. (Hospitality & Tourism Management)

Institution: Universidade Europeia

Working Title: *O risco percebido e coberto pelas seguradoras*

Author: Carla Delfino

Supervisor(s): **Antónia Correia**

Degree: M.Sc. (Hospitality & Tourism Management)

Institution: Universidade Europeia

Working Title: *Conciliar o novo turista com destinos sol e praia – Caso do Algarve*

Author: Mário N.F. Rafael

Supervisor(s): **Antónia Correia**

Degree: M.Sc. (Hospitality & Tourism Management)

Institution: Universidade Europeia

Working Title: *Partilha de informação em online vacation Tentals: A qualidade de respostas a online reviews: o caso português*

Author: Maria J.A. Ferreira

Supervisor(s): **Antónia Correia**

Degree: M.Sc. (Hospitality & Tourism Management)

Institution: Universidade Europeia

Working Title: *Informação Personalizada para Pacientes de Radioterapia*

Author: João Sousa

Supervisor(s): **Fernanda Llussá**

Degree: M.Sc. (M.E. Biomedics)

Institution: Universidade Nova de Lisboa

Working Title: *O papel da custódia de títulos financeiros nos mercados financeiros internacionais: mercados auto compensados e não compensados*

Author: Micael V. Santos

Supervisor(s): **Isabel Vieira**

Degree: M.Sc. (Economics)

Institution: Universidade de Évora

Working Title: *The impact of Portuguese demographic changes on the demand and supply of blood in the region of Algarve*

Author: Fábria M. Encarnação

Supervisor(s): **Jorge Andraz**, Eugénia Vasconcelos

Degree: M.Sc. (Health Care Services Management)

Institution: Universidade do Algarve

### 3.4.5. Funded research projects

#### i) Projects funded by national science agencies

Title: *Acesso, sucesso e insucesso: PER...cursos estudantis no ensino superior público*

CEFAGE researchers: **M. Conceição Rego (Coord.)**, Carlos Vieira, Isabel Vieira

Partner institutions: CIPES, Universidade De Lisboa, Universidade do Minho e Universidade do Porto

Funding: 96 600 € (A3ES - Agência de Avaliação e Acreditação do Ensino Superior)

Period: 2015-2017

Title: *Projeto de Desenvolvimento do Plano de Sustentabilidade dos Vinhos do Alentejo (ALT20-01-0853-FEDER-000013)*

CEFAGE researchers: **M. Raquel Lucas (Coord.)**, **M. Conceição Rego**, Rui Fragoso

Partner institutions: CVRA (Comissão Vitivinícola da Região Alentejana)

Funding: 266.256,00€ (Alentejo 2020)

Period: 2016-2018

#### ii) Projects funded by international research programs

Title: *Urban Wins - Urban metabolism accounts for building Waste management Innovative Networks and Strategies*

CEFAGE researchers: **Joaquim P. Pina**

Partner institutions: Comune di Cremona (Coordenador do projeto); Fondazione Ecosistemi Onlus; Università IUAV di Venezia; Asociação Ecoteca; Asociação Romania Green Building Council; Asociação Ecoti; Fundacio CTM Centre Tecnologic; ICLEI European Secretariat GMBH; Universidade



de Coimbra; Chalmers Tekniska Högskola AB; NOVA.ID.FCT- Associação para a Inovação e Desenvolvimento da FCT; S.C. Global Innovation Solution S.R.L.; Marraiafura Comunicazione Srls; Provincia di Roma; CEIFACOP- Cooperativa de Estudos, Investigação e Formação Ambiental, CRL; Municipiul Bucuresti; Asociatia Environ; Camera di commercio industria artigianato agricoltura di Cremona; Ajuntament de Sabadell; Istituto Nazionale di Statistica; Ajutament de Manresa; Municipio de Leiria; Consorci del Bages per la gestio de residus; SERI- Nachal tigkeitsforschungs und-kommunikations Gmgh; Cree Gmbh; Citta di Torino; Linea Gestioni srl.

Funding: 5.000.000€ (2020 research and innovation programme under grant agreement No 690047)

Period: 2016-2019

### iii) Projects funded by international industry-related programs

Title: *Plano de dinamização de Orotava*, Tenerife, canarias, Spain

CEFAGE researchers: **Antónia Correia**

Partner institutions:

Funding: 23.000€ (Municipality of Orotava)

Period: 03/2016 – 03/2017

Title: *Rural Tourism in Spain, Tenerife, Canarias*

CEFAGE researchers: **Antónia Correia**

Partner institutions:

Funding: 25.000€ (Homeaway)

Period: 03/2016-03/2017

Title: *Measuring destination competitiveness: A global study*, Langkawi Development Authority

CEFAGE researchers: **Antónia Correia**

Partner institutions:

Funding: 25.000€ (Homeaway)

Period: 09/2016

Title: *Attracting Retirees And Pre-Retirees: From evidences to a sustainable strategy*

CEFAGE researchers: **Antónia Correia**

Partner institutions: Charleston University

Funding: Charleston University

Period: 07/2016 - 12/2017

### iv) Projects funded by national industry-related programs

Title: *Memórias Culturais e Promoção Turística: O Memorial do Convento, de José Saramago*

CEFAGE researchers: **Antónia Correia** (Chair)

Partner institutions: Lareaute Universities

Funding: 2.640€ (Laureate)

Period: 10/2016 – 03/2017

Title: *O Perfil do Turista Nacional que Visita o Algarve (Profiling the Domestic Tourist in the Algarve)*

CEFAGE researchers: **Antónia Correia** (Chair)

Partner institutions: University of Algarve, Turismo do Algarve (RTA), Faro.

Funding: 50.000 € (Turismo do Algarve (RTA))

Period: 07/2016 – 12/2016

Title: *365 Algarve*

CEFAGE-UE researchers: **Antónia Correia**

Partner institutions: University of Algarve, Turismo do Algarve (RTA)

Funding: 20.000€ (Turismo do Algarve (RTA))

Period: 01/2017 – 10/2017

### 3.4.6. Presentations at conferences and seminars

#### i) Presentations at international conferences

**Afonso, O.**, P. Gil, P. Brito, "Economic growth, the high-tech sector and the high skilled: theory and quantitative implications", *10th Annual Meeting of the Portuguese Economic Journal*, Universidade de Coimbra, Coimbra, Portugal, 01-03/07/2016.

**Andraz, J., C. Viegas**, N. Norte, "Long term relationship between credit default swaps premiums and sovereign bonds spreads in the aftermath of the financial crisis", *1st SWUFE – Exeter Joint Research Workshop*, Chengdu, China, 27-28/06/2016.

**Correia, A.**, "Insights to Develop a Brand Personality Scale", *First International Conference on Branding and Tourism Development, Iran Cultural Heritage, Handicrafts and Tourism Organization (ICHHTO) and WTO*, Isfahan, Iran, 03-05/01/2016.

**Correia, A.**, "Key issues to research tourists with Big Data", *8th World Conference For Graduate Researchers In Tourism, Hospitality And Leisure And 4th Interdisciplinary Tourism Conference*, Bodrum, Turkey, 24-29/05/2016.

Costa, R., **C. Vieira, I. Vieira**, "Students' perceptions of the impact of distance from the family home on academic performance: an exploratory analysis", *56th ERSA Congress*, Vienna, Austria, 23-26/08/2016.

Del Chiappa, G., **A. Correia**, "Factors shaping tourists' inertia toward behaving responsibly", *4th Interdisciplinary Tourism Conference*, Bodrum, Turkey, 24-29/05/2016.

Ferreira, M., **A. Correia**, "Sharing information: quality of reviews on online vacation rentals", *International Conference on Innovation and Entrepreneurship in Marketing and Consumer Behaviour*, Lisbon, Portugal, 20-21/05/2016.

Ghasemi, V., G. Del Chiappa, **A. Correia**, "Host-guest interactions: The perceived impact of residents' apathy on service quality", *Service Quality in Hospitality and Tourism, Experiencing Persian Heritage*, Isfahan, Iran, 16-17/07/2016.

Ghasemi, V., G. Del Chiappa, **A. Correia**, "Host-guest interactions: conceptualising and testing the role of apathy", *4th Interdisciplinary Tourism Conference*, Bodrum, Turkey, 24-29/05/2016.

Ghasemi, V., G. Del Chiappa, **A. Correia**, "The impact of residents' apathy toward tourism development: a comparative study", *Tourism Management Studies Conference*, Olhão, Portugal, 16-19/11/2016.

Gil, P., **O. Afonso**, P. Brito, "Economic Growth, the High-Tech Sector, and the High Skilled: Theory and Quantitative Implications", *Dynamic, Economic Growth and International Trade XXI, DEGIT XXI*, School of Economics, University of Nottingham, Nottingham Centre for Globalisation and Economic Policy (GEP), UK, 1-2/09/2016.

Gil, P., **O. Afonso**, S. Gabriel, "Is the skills mismatch important in a skill-biased technological growth model with imperfect substitutability between immigrants and natives", *10th Annual Meeting of the Portuguese Economic Journal*, Universidade de Coimbra, Coimbra, Portugal, 01-03/07/2016.

**Llussá, F.**, "The Rich, The Poor and The Entrepreneur: Entrepreneurship Across Personal and Country Income Classes", *International Economic Atlantic Conference (IAES)*, Lisbon, Portugal, 16-19/03/2016.

**Lucas, M.R., Rego, M.C. Vieira, I. Vieira**, "Proximity and cooperation for innovative regional development: the case of Science and Technology Park of Alentejo", *56th ERSA Congress, Vienna, Austria*, 23-26/08/2016.

Lunekova, E., **A. Correia**, "Visible Signs of luxury in PORTUGAL", *4th Interdisciplinary Tourism Conference*, Bodrum, Turkey, 24-29/05/2016.

Magalhães, M., **O. Afonso**, "A multi-sector growth model with technology diffusion and networks", *41 Simposio de la Asociación Española de Economía*, Universidad del País Vasco/Euskal Herriko Unibertsitatea, Bilbao, Spain, 15-17/12/2016.

Oliveira, C., A. Brochado, **A. Correia**, "Quality of life of Senior Residential Tourists: A Literature Review and Future Research", *Tourism & Ageing Conference 2016*, Lisbon, Portugal, 26-29/10/2016.

Oliveira, M., M.J. Forte, M.I. Roque, M. Leal, S. Sousa, **A. Correia**, "The Mediating Role of Literary Tour Guides: José Saramago versus Mafra's National Palace", *New Challenges And Boundaries In Tourism: Policies, Innovations And Strategies*, Naples, Italy, 29/06-02/07/2016.

Oliveira, M., M.J. Forte, M.I. Roque, M. Leal, S. Sousa, **A. Correia**, "Cultural Memories, Discursive Gaps and Touristic Promotion: A Framework for Applied Research", *International Conference on Innovation and Entrepreneurship in Marketing and Consumer Behaviour*, Lisbon, Portugal, 20-21/05/2016.

**Pereira, J., M.A. Galego**, "The drivers of wage inequality across Europe: a recentered influence function regression approach", *Annual Meeting of the Association of Southern European Economic Theorists (ASSET)*, Thessaloniki, Greece, 10-12/11/2016.

**Pereira, J., M.A. Galego**, "The drivers of wage inequality across Europe: a recentered influence function regression approach", *10th annual meeting of the Portuguese Economic Journal*, University of Coimbra, Portugal, 1-3/7/2016.

Pereira, R., H. Reis, **A. Correia**, "Tourists' risk perception impact on satisfaction and behavioural intentions towards the Algarve", *Tourism & Management Studies Conference*, Olhão, Portugal, 16-19/11/2016.

Pina, M., **A. Correia**, G. Del Chiappa, "La definizione del concetto dell'autenticità nelle destinazioni turistiche: un approccio fondato sul laddering", *Italian Accademy Marketing Conference*, Newcastle Business School, 04-07/07/2016.

Pina, M., **A. Correia**, G. Del Chiappa, "Pursuing happiness while on holidays", *4th Interdisciplinary Tourism Conference*, Bodrum, 24-29/05/2016.

**Rego, M.C.**, "Origem e Destino dos estudantes no ensino superior: um estudo acerca da mobilidade geográfica", *1<sup>st</sup> AMSR Congress and 23<sup>rd</sup> APDR Congress*, Marrakech, Morocco, 30-31/05/2016.

Rodrigues, A., **A. Correia**, M. Kozak, "Is a Mixed-Method Approach suitable for a Destination Image Assessment? A Lake Tourism Study as an Example", *5<sup>o</sup> Congresso Ibero-Americano em Investigação Qualitativa e ao 1st International Symposium on Qualitative Research*, Porto, Portugal, 12-14/07/2016.

**Romão J.**, "The City of Culture", The Science of the City – Regional Science Academy and ICOMOS International Workshop, Naples, Italy, 20-23/03/2016.

**Romão, J.**, "The Smart City as a Common Place for Tourists and Residents", *Smart People in Smart Cities – International Workshop*, Banská Bystrica, Slovakia, 28-30/08/2016.

**Romão, J.**, B. Neuts, "Impacts of tourism and territorial capital on sustainable development in European regions", *56<sup>th</sup> European Regional Science Association Congress*, Vienna, Austria, 23-26/08/2016.

**Romão, J.**, H. Saito, "A spatial econometric analysis on the determinants of tourism competitiveness in Japanese Prefectures", *2<sup>nd</sup> European Asian Tourism Studies Association Conference*, Lisbon, Portugal, 27-30/06/2016.

**Romão, J.**, K. Kourtiti, P. Nijkamp, "A structural analysis of the determinants of urban attractiveness", *Tourism and Transport: exploration of interdependencies - NECTAR Cluster 5 workshop*, Lugano, Switzerland, 29/09-01/10/2016.

**Romão, J.**, K. Machino, P. Nijkamp, "Forecasting Health and Wellness Tourism Development in Hokkaido: A Multi Criteria Analysis", *54<sup>th</sup> Meeting of the Japan Society of the Regional Science Association International*, Niigata, Japan, 8-10/10/2016.

**Sequeira, T.**, P. Gil, **O. Afonso**, "Growth without scale effects due to entropy", *Dynamic, Economic Growth and International Trade XXI, DEGIT XXI*, School of Economics, University of Nottingham, Nottingham Centre for Globalisation and Economic Policy (GEP), UK, 1-2/09/2016.

Soares, J.O., **J.P. Pina**, "Macro-Regions, Country Effect and Financial Ratios: A Comparative Study in the Euro Area", *1st AMSR Congress and 23rd APDR Congress, Sustainability of Territories in the Context of Global Change*, Marrakech, Morocco, 30-31/05/2016.

## ii) Presentations at iberian or portuguese-spoken conferences

**Afonso, O.**, “Economia Social em Portugal e na União Europeia”, *Congresso Nacional – Qualidade De Vida: Da Infância à Terceira Idade*, Perafita, Portugal, 13/04/2016.

**Afonso, O.**, “O impacto da crise económica na sociedade e na saúde dos Portugueses”, *Annual Meeting - Coimbra Health School, Jornadas Científicas de Economia da Saúde*, Coimbra, Portugal, 08/04/2016.

**Afonso, O., T. Sequeira**, “Tradable and nontradable directed technical change”, *Applied & Econometrics Workshop*, Alicante, Espanha, 08/06/2016.

Baltazar, M.S., **M.C. Rego**, I. Ramos, M. Freire, **A. Dionísio**, **M.R. Lucas**, “Ligações e Percepções de Desenvolvimento Urbano-Rural em Portugal”, *IX Congresso Português de Sociologia - PORTUGAL, TERRITÓRIO DE TERRITÓRIOS*, Universidade do Algarve, Faro, Portugal, 06-08/08/2016

**Correia, A.**, “As estatísticas do turismo e a realidade turística”, *18ª Reunião do Grupo de Trabalho para o Desenvolvimento das Estatísticas Macroeconómicas (GTDEM)*, Conselho Superior de Estatística, Lisboa, Portugal, 27/10/2016.

**Correia, A.**, “Reshaping the future of tourism: From what will be to what should be?”, *RAP – Annual meeting of Pestana Hotel Chain*, Lisbon, Portugal, 18-20/02/2016.

**Correia, A.**, “Segmentação no Turismo Outdoor”, *Conferência Internacional de Turismo Outdoor, Web Summit*, Câmara Municipal de Mafra, Portugal, 4/11/2016.

**Correia, A.**, “Turismo Sustentavel”, *Conferência Internacional Coastwatch 2016, Turismo Sustentável no Litoral*, Oeiras, Portugal, 16/11/2016.

Freire, C., I. Ramos, **M.C. Rego**, **A. Dionísio**, M.S. Baltazar, **M.R. Lucas**, “Agricultura Urbana: Impactos Económicos, Sociais e Ecológicos”, *ESADR 2016, VIII Congresso APDEA e II Encontro Lusófono de Economia, Sociologia, Ambiente e Desenvolvimento Rural*, Coimbra, Portugal, 07-09/09/2016.

**Rego, M.C.**, “Caminhos do ensino superior public em Portugal: um ensaio acerca da mobilidade geográfica dos estudantes”, *6ª Conferência FORGES*, Universidade Estadual de Campinas, Campinas, Brasil, 28-30/11/2016.

**Rego, M.C., A. Dionísio**, I. Ramos, **M.R. Lucas**, M.S. Baltazar, “Instituições de Ensino Superior e movimentos migratórios em Portugal: uma aplicação do método fuzzy”, *6ª Conferência FORGES*, Universidade Estadual de Campinas, Campinas, Brasil, 28-30/11/2016.

**Rego, M.C.**, C. Freire, I. Ramos, **A. Dionísio**, M.S. Baltazar, **M.R. Lucas**, “Vínculos Urbano-Rurais em Portugal e Perspectivas de Desenvolvimento”, *ESADR 2016, VIII Congresso APDEA e II Encontro Lusófono de Economia, Sociologia, Ambiente e Desenvolvimento Rural*, Coimbra, Portugal, 07-09/09/2016.

## iii) Seminars presented at other institutions

**Correia, A.**, “O NOVO TURISMO, a sua circunstância e os licenciadores”, Comissão Europeia da Sociedade de Geografia de Lisboa, 23/06/2016.

**Llussá, F.**, “Business Models in Biotechnology”, Mermaid Summer School, Marie Currie Program, ITN (Initial Training Network), 09/06/2016.

**Llussá, F.**, “Project Evaluation”, Mermaid Summer School, Marie Currie Program, ITN (Initial Training Network), 08/06/2016.

**Lucas, M.R.**, I.J. Ramos, **M.C. Rego**, “Desenvolvimento Rural Brasil / Portugal, Desafios da Sustentabilidade”, UNIOESTE, Universidade Estadual do Oeste do Paraná, Campus de Toledo, Brasil, 02/12/2016.

**Romão, J.**, “Tourism Economics and Development”, Chuo University, Tokyo, Japan, 16/01/2016.

## 4. ORGANIZATION OF SCIENTIFIC EVENTS

### 4.1. Conferences and Workshops

#### International Events

Title: *10th European Conference on Information Systems Management*

CEFAGE's local organizers: Andreia Dionísio, António Guerreiro, Gertrudes Guerreiro, Rui Quaresma

Date: 08-09/09/2016

Local: Universidade de Évora

#### National, Iberian or Portuguese-spoken Events

Title: *Doctoral Consortium 2016*

CEFAGE's local organizers: Andreia Dionisio (chair), Luís A.G. Coelho

Date: 13/05/2016

Local: Universidade de Évora

Title: *CICLO DE CONFERÊNCIAS DO CEFAGE: A Supervisão para Além do Supervisor*

CEFAGE's local organizers: Jacinto Vidigal da Silva (chair)

Date: 10/10/2016

Local: Universidade de Évora

### 4.2. Courses and Technical Seminars

Title: *Workshop em Industrial Organization*

CEFAGE's local organizers: Andreia Dionisio, Elisabete Félix, Miguel Rocha Sousa

Speaker(s): Cesaltina Pires (U. Évora)

Duarte Brito (U. Nova de Lisboa)

Catarina Roseta Palma (ISCTE)

Date: 08/01/2016

Local: Universidade de Évora

Title: *5<sup>th</sup> Workshop CEFAGE*

CEFAGE's local organizers: Sergio Santos, Carla Amado

Date: 09/06/2016

Local: Universidade do Algarve

Title: *Workshop on Maximum Entropy and its Applications*

CEFAGE's local organizers: Andreia Dionísio, Elvira Silva and Pedro Macedo

Date: 12/10/2016

Local: Universidade de Aveiro

### 4.3. Research Seminars

Speaker(s): Gilberto Loureiro (Universidade do Minho)

Title: *Equity offerings, stock price crash risk and the impact of securities regulation: International evidence*

Date: 22/01/2016

Local: Universidade do Algarve

Speaker(s): Nelson António (ISCTE-IUL)

Title: *Qualstrategy: How to think the future paying attention to the present*

Date: 15/02/2016

Local: Universidade do Algarve

Speaker(s): João Romão (Universidade do Algarve)

Title: *Capital territorial, sustentabilidade do turismo e crescimento económico regional*

Date: 26/02/2016

Local: Universidade de Évora

Speaker(s): Soumodip Sarkar (Universidade de Évora)

Title: *Under Pressure- Co-opetition in the cork industry*

Date: 08/03/2016

Local: Universidade de Évora

Speaker(s): Teresa Vasconcelos e Sousa (Universidade Lusófona)

Title: *A key currency in a liquidity trap*

Date: 15/03/2016

Local: Universidade de Évora

Speaker(s): Susana Azevedo (Universidade da Beira Interior)

Title: *The influence of green practices on supply chain performance: A case study approach*

*Ecosilient index to assess the greenness and resilience of the upstream automotive supply chain*

Date: 18/03/2016

Local: Universidade de Évora

Speaker(s): André Morgado (ISEG)

Title: *Customer References and the Buying Behaviour of Capital Equipment*

Date: 15/04/2016

Local: Universidade de Évora

Speaker(s): Lara Ferreira (Universidade do Algarve)

Title: *Medição de Resultados em Saúde – Determinação de Sistemas de Valores Baseados em Preferências*

Date: 22/04/2016

Local: Universidade de Évora

Speaker(s): Jesus Calzadilla (Universidad Politécnica de Madrid)

Title: *New Competitive Economy: Clusters and Industrial Districts at work*

Date: 22/04/2016

Local: Universidade de Évora

Speaker(s): Pedro Brinca (NovaSBE)

Title: *Accounting for Business Cycles with Wedges*

Date: 29/04/2016

Local: Universidade de Évora

Speaker(s): Alfredo Marvão Pereira (The College of William and Mary, EUA)

Title: *Sessão de apresentação da obra: Investimentos em Infra-estruturas em Portugal*

Date: 04/05/2016

Local: Universidade de Évora

Speaker(s): Jacinto Vidigal da Silva (Universidade de Évora)

M. Aurora Galego (Universidade de Évora)

Title: *Ownership structure, productivity and firms' life-cycle: evidence from Portugal*

Date: 17/05/2016

Local: Universidade de Évora

Speaker(s): José Miguel Gaspar (École Supérieure des Sciences Économiques e Commerciales, France)

Title: *Short sales manipulation and product market relationships*

Date: 27/05/2016

Local: Universidade de Évora

Speaker(s): Francisco Banha (GESBANHA, SA, Caxias, Portugal)

Title: *Entrepreneur, investor and the Portuguese 'Ecosystem'*

Date: 16/09/2016

Local: Universidade do Algarve

Speaker(s): Dário Gonçalves (BeCorporate – Projetos de Investimento, Faro, Portugal)

Title: Capital de risco, financiamento de ideias e projetos

Date: 22/09/2016

Local: Universidade do Algarve

Speaker(s): Rui Menezes (ISCTE)

Title: *Risk assessment and stock market volatility in the Eurozone: 1986-2014*

Date: 14/10/2016

Local: Universidade de Évora

Speaker(s): Piergiorgio Valente (Link Campus University, Rome, Italy)

Title: *Changes within the international tax framework – what should companies be aware of?*

Date: 21/10/2016

Local: Universidade do Algarve

Speaker(s): Miguel Ferreira (Ph.D. candidate NOVASBE)

Title: *Fiscal consolidation and Inequality*

Date: 28/10/2016

Local: Universidade de Évora

Speaker(s): Cristina Marreiros (Universidade de Évora)

Sheila da Silva (Aluna do Doutoramento em Gestão, Universidade de Évora)

Title: *Efeitos da Qualidade Anterior da Relação Cliente-Empresa no Processo de Atribuição Causal dos Incidentes Críticos: Um estudo longitudinal no contexto da Prestação de Serviços*

Date: 08/11/2016

Local: Universidade de Évora

Speaker(s): Manuel Branco (Universidade de Évora)

Title: *Conversas com o CEFAGE: Economia para a cidadania*

Date: 30/11/2016

Local: Universidade de Évora

Speaker(s): Arman Eshraghi (University of Edinburgh Business School, Edinburgh, Scotland)

Title: *Fund manager active share, overconfidence and investment performance*

Date: 05/12/2016

Local: Universidade do Algarve

Speaker(s): Francisca Mendonça Souza (ISCTE-IUL)

Title: *Modelos de Previsão - Aplicações à Energia Eléctrica - ARIMA - ARCH - AI e ACP (Apresentação do Livro)*

Date: 16/12/2016

Local: Universidade de Évora

## 5. WORKING-PAPER SERIES

**Cândido, C., L.M.S. Coelho,** Rúben M.T. Peixinho (2016), *The Financial Impact of a Withdrawn ISO 9001 Certificate*, CEFAGE-UE Working Paper 2016/01.

**Romão, J.,** H. Saito (2016), *Regional Tourism Dynamics in Japan: An Exploratory Spatial Analysis*, CEFAGE-UE Working Paper 2016/02.

Silva, V., **E. Ramalho, C. Vieira** (2016), *The use of cheques in the European Union: a cross-country analysis*, CEFAGE-UE Working Paper 2016/03.

**Andraz, J., P.M.M. Rodrigues** (2016), *Monitoring tourism flows and destination management: Empirical evidence for Portugal*, CEFAGE-UE Working Paper 2016/04.

Silva, V.G., **E. Ramalho, C. Vieira** (2016), *Is EMV adoption changing card payments? Evidence from the European Union*, CEFAGE-UE Working Paper 2016/05.

**Xavier, A.S.,** M.B. Freitas, M.S. Rosário, R. Fragoso (2016), *Disaggregating Statistical Data at Field Level: An Entropy Approach*, CEFAGE-UE Working Paper 2016/06.

**Sequeira, T.,** P.M. Gil, **O. Afonso** (2016), *Growth without scale effects due to entropy*, CEFAGE-UE Working Paper 2016/07.

**Belbute, J.,** A.M. Pereira (2016), *Updated Reference Forecasts for Global CO2 Emissions from Fossil-Fuel Consumption*, CEFAGE-UE Working Paper 2016/08.

**Carvalho, L.,** B. Cibrão (2016), *The educational use of Digital Storytelling in virtual classes of Entrepreneurship: A comprehensive study of students' perceptions*, CEFAGE-UE Working Paper 2016/09.

Sousa, A., J. Thomaz, **P. Ferreira,** F. Jorge, E. Santos (2016), *The Impact of Mentoring and Helping Relationships in the Informal Process of Employee Branding: Construction of the Measuring Instrument*, CEFAGE-UE Working Paper 2016/10.



**CEFAGE**  
Universidade de Évora  
Palácio do Vimioso (Gab. 224)  
Largo Marquês de Marialva, 8  
7000-809 Évora  
Portugal

**E-mail:** [cefage@uevora.pt](mailto:cefage@uevora.pt)

**Phone:** (+351) 266 706 581

**Webpage:** [www.cefage.uevora.pt](http://www.cefage.uevora.pt)



UNIVERSIDADE  
DE ÉVORA



NOVA  
idFCT  
Associação para a Inovação  
e Desenvolvimento da FCT

COMPETE  
2020

PORTUGAL  
2020



FCT  
Instituição para a Ciência e a Tecnologia